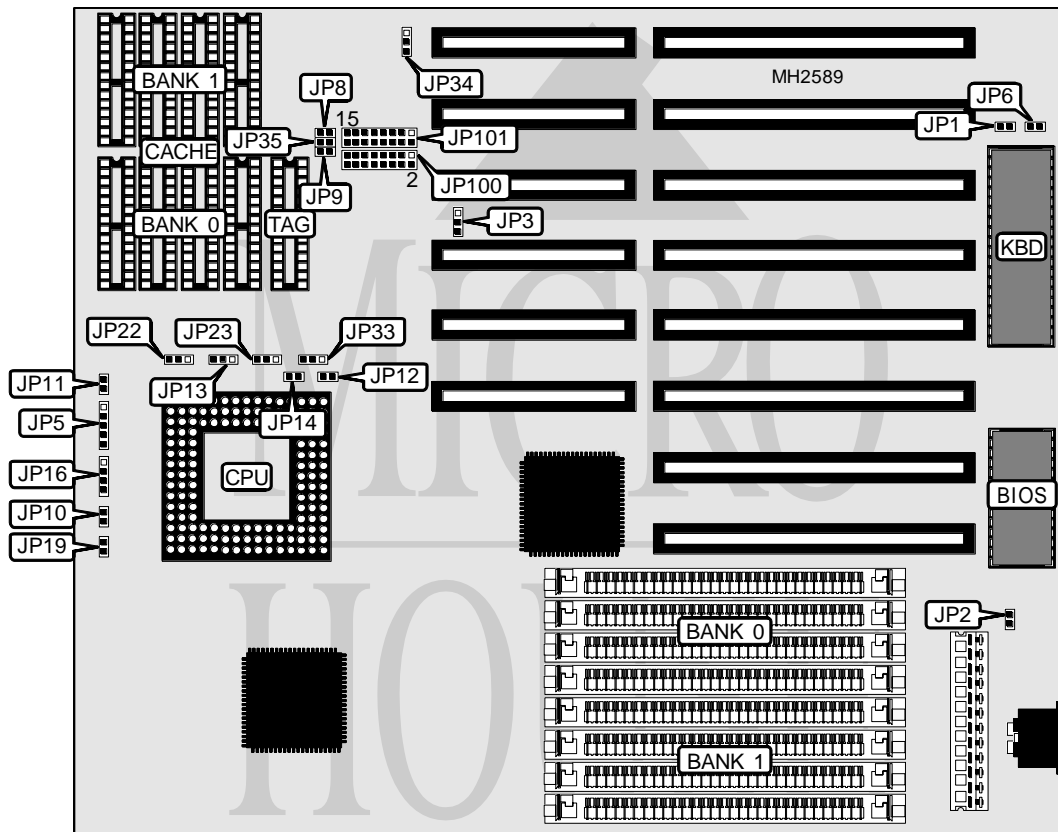


UNIDENTIFIED ISA - S 4 8 6 B

Processor 80486SX/80486DX/80486DX2
Processor Speed 16/20/25/33/50(internal)/50MHz
Chip Set Symphony
Max. Onboard DRAM 32MB
Cache 64/128/256KB
BIOS AMI
Dimensions 330mm x 218mm
I/O Options None
NPU Options None



CONNECTIONS			
Purpose	Location	Purpose	Location
Power LED & keylock	JP5	Speaker	JP16
Turbo switch	JP10	Reset switch	JP19
Turbo LED	JP11		

Continued on next page. . .

UNIDENTIFIED ISA - S486B

... continued from previous page

USER CONFIGURABLE SETTINGS		
Function	Jumper	Position
í Factory configured - do not alter	JP1	N/A
í Factory configured - do not alter	JP2	N/A
í Factory configured - do not alter	JP3	N/A
í Monitor type select color	JP6	Closed
Monitor type select monochrome	JP6	Open
í Factory configured - do not alter	JP8	N/A
í Factory configured - do not alter	JP9	N/A
í Factory configured - do not alter	JP33	N/A
í Factory configured - do not alter	JP35	N/A

DRAM CONFIGURATION		
Size	Bank 0	Bank 1
1MB	(4) 256K x 9	NONE
2MB	(4) 256K x 9	(4) 256K x 9
4MB	(4) 1M x 9	NONE
5MB	(4) 1M x 9	(4) 256K x 9
5MB	(4) 256K x 9	(4) 1M x 9
8MB	(4) 1M x 9	(4) 1M x 9
16MB	(4) 4M x 9	NONE
17MB	(4) 4M x 9	(4) 256K x 9
17MB	(4) 256K x 9	(4) 4M x 9
20MB	(4) 4M x 9	(4) 1M x 9
20MB	(4) 1M x 9	(4) 4M x 9
32MB	(4) 4M x 9	(4) 4M x 9

CACHE CONFIGURATION			
Size	Bank 0	Bank 1	TAG
64KB	(4) 8K x 8	(4) 8K x 8	(1) 8K x 8
128KB	(4) 32K x 8	NONE	(1) 8K x 8
256KB	(4) 32K x 8	(4) 32K x 8	(1) 32K x 8

CACHE JUMPER CONFIGURATION			
Size	JP22	JP23	JP34
64KB	pins 1 & 2 closed	pins 1 & 2 closed	pins 1 & 2 closed
128KB	pins 1 & 2 closed	pins 1 & 2 closed	pins 1 & 2 closed
256KB	pins 2 & 3 closed	pins 2 & 3 closed	pins 2 & 3 closed

CACHE JUMPER CONFIGURATION (CON'T)		
Size	JP100	JP101
64KB	pins 1 & 3, 5 & 7, 9 & 11, 13 & 15 closed	pins 1 & 3, 5 & 7, 9 & 11, 13 & 15 closed
128KB	pins 2 & 4, 6 & 8, 10 & 12, 14 & 16 closed	pins 2 & 4, 6 & 8, 10 & 12, 14 & 16 closed
256KB	pins 1 & 3, 5 & 7, 9 & 11, 13 & 15 closed	pins 1 & 3, 5 & 7, 9 & 11, 13 & 15 closed

Continued on next page. . .

UNIDENTIFIED
ISA - S486B*... continued from previous page*

CPU TYPE CONFIGURATION			
Type	JP12	JP13	JP14
80486SX	Open	pins 2 & 3 closed	Open
80486DX	Closed	pins 1 & 2 closed	Closed