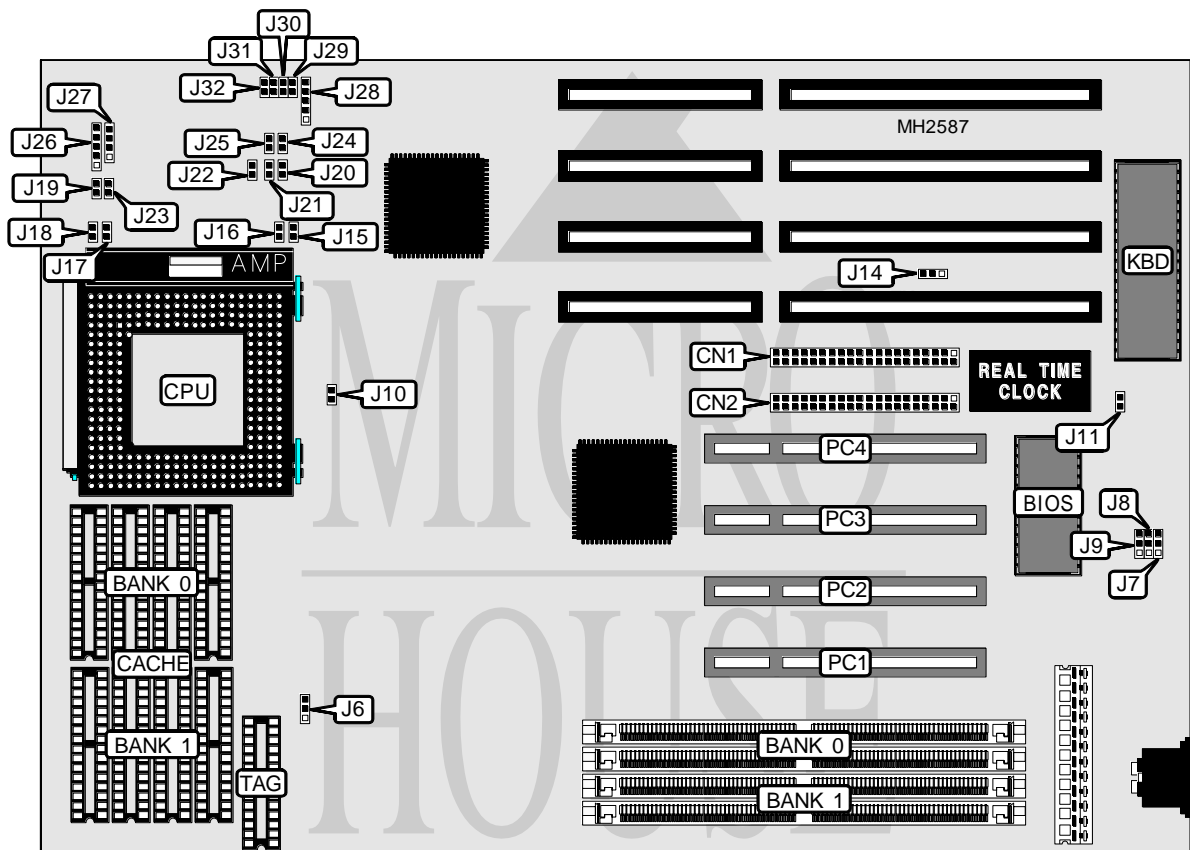


# TYAN COMPUTER CORPORATION

## S 1 4 6 1

<b>Processor</b>	Pentium
<b>Processor Speed</b>	75/90/100/120/133MHz
<b>Chip Set</b>	Unidentified
<b>Max. Onboard DRAM</b>	128MB
<b>Cache</b>	256/512KB
<b>BIOS</b>	AMI/Award
<b>Dimensions</b>	254mm x 218mm
<b>I/O Options</b>	32-bit PCI slots (4), IDE interfaces (2)
<b>NPU Options</b>	None



CONNECTIONS			
Purpose	Location	Purpose	Location
IDE interface (primary)	CN1	Turbo LED	J23
IDE interface(secondary)	CN2	Power LED & keylock	J26
Turbo switch	J17	Speaker	J27
Reset switch	J18	32-bit PCI slots	PC1 - PC4
IDE interface LED	J19		

Continued on next page. . .

# TYAN COMPUTER CORPORATION

## S 1 4 6 1

... continued from previous page

USER CONFIGURABLE SETTINGS		
Function	Jumper	Position
í Factory configured - do not alter	J7	pins 2 & 3 closed
í Factory configured - do not alter	J8	pins 1 & 2 closed
í Factory configured - do not alter	J9	pins 1 & 2 closed
í Factory configured - do not alter	J10	Closed
í CMOS memory normal operation	J11	Open
CMOS memory clear	J11	Closed
í Factory configured - do not alter	J14	pins 2 & 3 closed
í Factory configured - do not alter	J24	N/A
í Factory configured - do not alter	J25	N/A
í Factory configured - do not alter	J28	N/A
í Factory configured - do not alter	J29	N/A
í Factory configured - do not alter	J30	N/A
í Factory configured - do not alter	J31	N/A
í Factory configured - do not alter	J32	Closed

DRAM CONFIGURATION		
Size	Bank 0	Bank 1
4MB	(2) 512K x 36	NONE
8MB	(2) 512K x 36	(2) 512K x 36
8MB	(2) 1M x 36	NONE
12MB	(2) 1M x 36	(2) 512K x 36
16MB	(2) 1M x 36	(2) 1M x 36
16MB	(2) 2M x 36	NONE
24MB	(2) 2M x 36	(2) 1M x 36
32MB	(2) 2M x 36	(2) 2M x 36
32MB	(2) 4M x 36	NONE
40MB	(2) 4M x 36	(2) 1M x 36
48MB	(2) 4M x 36	(2) 2M x 36
64MB	(2) 4M x 36	(2) 4M x 36
64MB	(2) 8M x 36	NONE
72MB	(2) 8M x 36	(2) 1M x 36
80MB	(2) 8M x 36	(2) 2M x 36
96MB	(2) 8M x 36	(2) 4M x 36
128MB	(2) 8M x 36	(2) 8M x 36

CACHE CONFIGURATION			
Size	Bank 0	Bank 1	TAG
256KB	(4) 32K x 8	(4) 32K x 8	(1) 32K x 8
512KB	(4) 64K x 8	(4) 64K x 8	(1) 32K x 8

CACHE JUMPER CONFIGURATION			
Size	J6	J21	J22
256KB	pins 2 & 3 closed	Open	Closed
512KB	pins 1 & 2 closed	Closed	Open

Continued on next page. . .

---

**TYAN COMPUTER CORPORATION**  
**S 1 4 6 1***... continued from previous page*

CPU SPEED CONFIGURATION			
Speed	J15	J16	J20
75MHz	Closed	Closed	Open
90MHz	Open	Closed	Open
100MHz	Closed	Open	Open
120MHz	Open	Closed	Closed
133MHz	Closed	Open	Closed