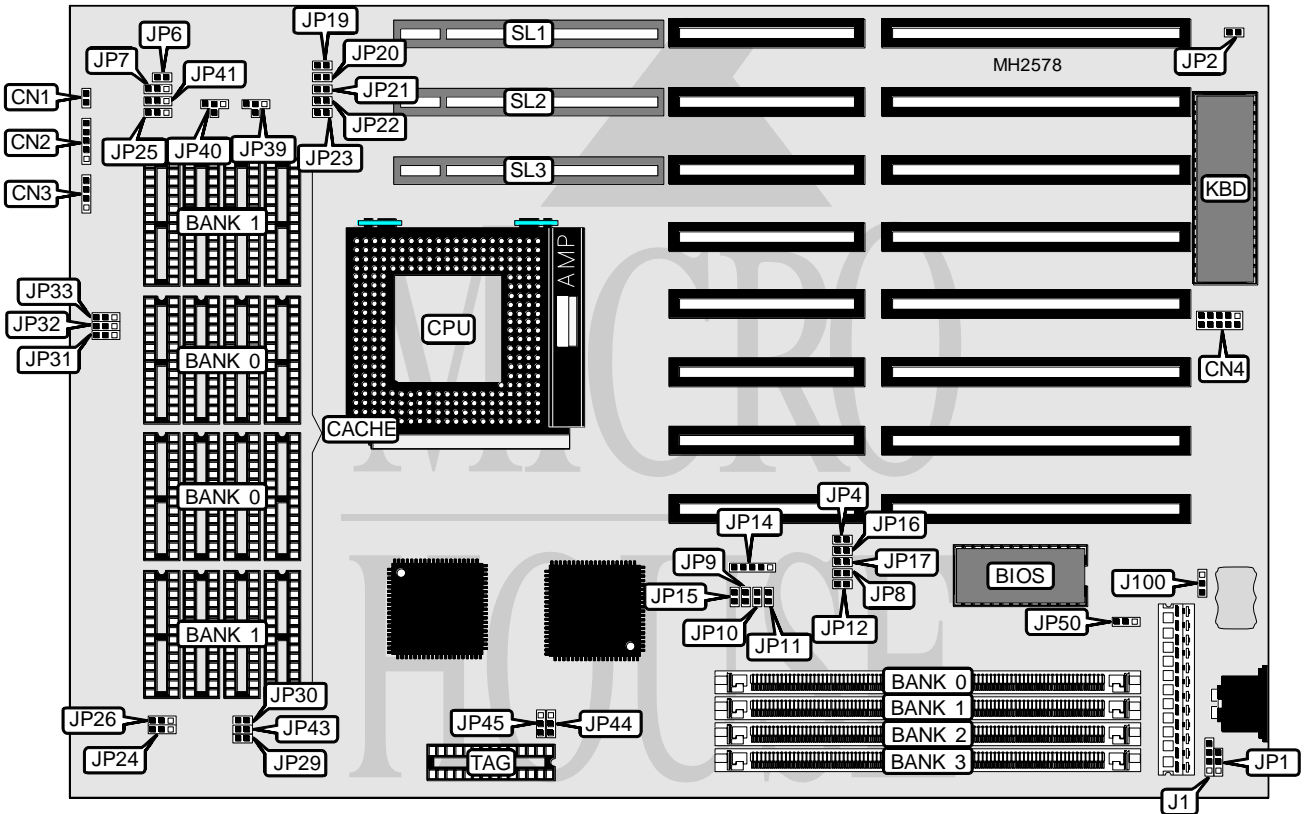


YOUNG MICRO SYSTEMS, INC. CROSS P5 - VLB

Processor	Pentium
Processor Speed	60MHz
Chip Set	OPT1
Max. Onboard DRAM	96MB
Cache	256/512KB
BIOS	AMI
Dimensions	330mm x 218mm
I/O Options	32-bit VESA local bus slots (3), PS/2 mouse connector
NPU Options	None



CONNECTIONS			
Purpose	Location	Purpose	Location
Reset switch	CN1	PS/2 mouse connector	CN4
Power LED & keylock	CN2	External battery	J1
Speaker	CN3	32-bit VESA local bus slots	SL1 - SL3

Continued on next page. . .

YOUNG MICRO SYSTEMS, INC.

CROSS P5-VLB

... continued from previous page

USER CONFIGURABLE SETTINGS		
Function	Jumper	Position
í Battery type select internal	JP1	pins 2 & 3 closed
Battery type select external	JP1	pins 1 & 2 closed
í Monitor type select color	JP2	Closed
Monitor type select monochrome	JP2	Open
í Factory configured - do not alter	JP4	Open
í Factory configured - do not alter	JP6	Open
í Factory configured - do not alter	JP7	pins 1 & 2 closed
í Factory configured - do not alter	JP8	Closed
í Factory configured - do not alter	JP9	Closed
í Factory configured - do not alter	JP12	Closed
í Factory configured - do not alter	JP14	pins 2 & 3, 4 & 5 closed
í Factory configured - do not alter	JP16	Open
í Factory configured - do not alter	JP17	Open
í Factory configured - do not alter	JP19	Open
í Factory configured - do not alter	JP20	Open
í Factory configured - do not alter	JP23	Open
í Factory configured - do not alter	JP24	Open
í Factory configured - do not alter	JP25	Open
í Factory configured - do not alter	JP26	Open
í Factory configured - do not alter	JP30	Closed
í Factory configured - do not alter	JP31	pins 1 & 2 closed
í Factory configured - do not alter	JP32	Open
í Factory configured - do not alter	JP33	Open
í Factory configured - do not alter	JP41	N/A
í Factory configured - do not alter	JP43	Open
í Factory configured - do not alter	JP44	pins 2 & 3 closed
í Factory configured - do not alter	JP45	pins 2 & 3 closed
í Factory configured - do not alter	JP50	N/A
í Factory configured - do not alter	J100	N/A

DRAM CONFIGURATION				
Size	Bank 0	Bank 1	Bank 2	Bank 3
2MB	(1) 256K x 36	(1) 256K x 36	NONE	NONE
4MB	(1) 256K x 36	(1) 256K x 36	(1) 512K x 36	NONE
4MB	(1) 512K x 36	(1) 512K x 36	NONE	NONE
6MB	(1) 256K x 36	(1) 256K x 36	(1) 512K x 36	(1) 512K x 36
6MB	(1) 256K x 36	(1) 256K x 36	(1) 1M x 36	NONE
8MB	(1) 512K x 36	(1) 512K x 36	(1) 1M x 36	NONE
8MB	(1) 1M x 36	(1) 1M x 36	NONE	NONE
10MB	(1) 256K x 36	(1) 256K x 36	(1) 2M x 36	NONE
12MB	(1) 256K x 36	(1) 256K x 36	(1) 512K x 36	(1) 2M x 36
12MB	(1) 512K x 36	(1) 512K x 36	(1) 2M x 36	NONE
14MB	(1) 256K x 36	(1) 256K x 36	(1) 1M x 36	(1) 2M x 36
16MB	(1) 512K x 36	(1) 512K x 36	(1) 1M x 36	(1) 2M x 36
16MB	(1) 1M x 36	(1) 1M x 36	(1) 2M x 36	NONE

Continued on next page. . .

YOUNG MICRO SYSTEMS, INC.

CROSS P5-VLB

... continued from previous page

DRAM CONFIGURATION (CON'T)				
Size	Bank 0	Bank 1	Bank 2	Bank 3
16MB	(1) 4M x 36	NONE	NONE	NONE
18MB	(1) 256K x 36	(1) 256K x 36	(1) 2M x 36	(1) 2M x 36
20MB	(1) 512K x 36	(1) 512K x 36	(1) 2M x 36	(1) 2M x 36
20MB	(1) 512K x 36	(1) 512K x 36	(1) 4M x 36	NONE
24MB	(1) 1M x 36	(1) 1M x 36	(1) 2M x 36	(1) 2M x 36
24MB	(1) 1M x 36	(1) 1M x 36	(1) 4M x 36	NONE
32MB	(1) 4M x 36	NONE	(1) 4M x 36	NONE
32MB	(1) 8M x 36	NONE	NONE	NONE
34MB	(1) 256K x 36	(1) 256K x 36	(1) 8M x 36	NONE
36MB	(1) 256K x 36	(1) 256K x 36	(1) 512K x 36	(1) 8M x 36
36MB	(1) 512K x 36	(1) 512K x 36	(1) 8M x 36	NONE
38MB	(1) 256K x 36	(1) 256K x 36	(1) 1M x 36	(1) 8M x 36
40MB	(1) 512K x 36	(1) 512K x 36	(1) 1M x 36	(1) 8M x 36
40MB	(1) 1M x 36	(1) 1M x 36	(1) 8M x 36	NONE
44MB	(1) 512K x 36	(1) 512K x 36	(1) 2M x 36	(1) 8M x 36
48MB	(1) 1M x 36	(1) 1M x 36	(1) 2M x 36	(1) 8M x 36
48MB	(1) 4M x 36	NONE	(1) 8M x 36	NONE
50MB	(1) 256K x 36	(1) 256K x 36	(1) 4M x 36	(1) 8M x 36
52MB	(1) 512K x 36	(1) 512K x 36	(1) 4M x 36	(1) 8M x 36
56MB	(1) 1M x 36	(1) 1M x 36	(1) 4M x 36	(1) 8M x 36
64MB	(1) 4M x 36	NONE	(1) 4M x 36	(1) 8M x 36
64MB	(1) 8M x 36	NONE	(1) 8M x 36	NONE
66MB	(1) 256K x 36	(1) 256K x 36	(1) 8M x 36	(1) 8M x 36
68MB	(1) 512K x 36	(1) 512K x 36	(1) 8M x 36	(1) 8M x 36
72MB	(1) 1M x 36	(1) 1M x 36	(1) 8M x 36	(1) 8M x 36
80MB	(1) 4M x 36	NONE	(1) 8M x 36	(1) 8M x 36
96MB	(1) 8M x 36	NONE	(1) 8M x 36	(1) 8M x 36

CACHE CONFIGURATION			
Size	Bank 0	Bank 1	TAG
256KB	(8) 32K x 8	NONE	(1) 32K x 8
512KB	(8) 32K x 8	(8) 32K x 8	(1) 32K x 8

CACHE JUMPER CONFIGURATION			
Size	JP29	JP39	JP40
256KB	Open	pins 1 & 2 closed	pins 1 & 2 closed
512KB	Closed	pins 2 & 3 closed	pins 2 & 3 closed

AT CLOCK CONFIGURATION		
Setting	JP10	JP11
LCLK/4	Closed	Open
LCLK/3	Open	Closed
LCLK/5	Closed	Closed
LCLK/6	Open	Open

Continued on next page. . .

YOUNG MICRO SYSTEMS, INC.
CROSS P5-VLB*... continued from previous page***VESA WAIT STATE CONFIGURATION**

Wait states	JP21
0 wait states	Open
1 wait state	Closed

BUS SPEED CONFIGURATION

CPU speed	JP22
<= 33MHz	Open
> 33MHz	Closed

VESA SAMPLE CONFIGURATION

Sample	JP15
T3	Closed
T2	Open