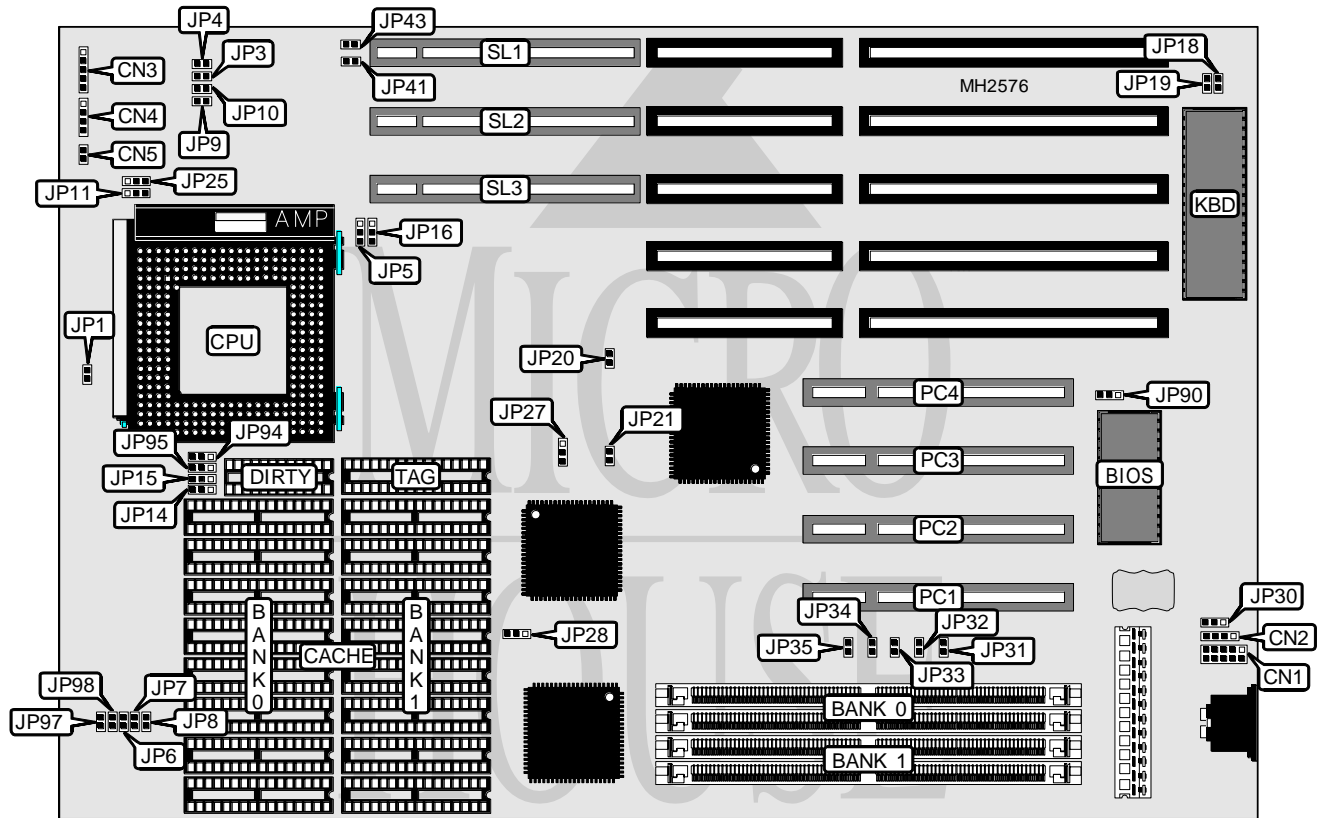


YOUNG MICRO SYSTEMS, INC. CROSS P54C-VIP (REV. 1.0)

Processor	Pentium
Processor Speed	90/100MHz
Chip Set	OPTI
Max. Onboard DRAM	128MB
Cache	256/512/1024/2048KB
BIOS	Award
Dimensions	330mm x 218mm
I/O Options	32-bit VESA local bus slots (3), 32-bit PCI slots (4), PS/2 mouse connector
NPU Options	None



CONNECTIONS			
Purpose	Location	Purpose	Location
PS/2 mouse connector	CN1	Reset switch	CN5
External battery	CN2	32-bit VESA local bus slots	SL1 - SL3
Power LED & keylock	CN3	32-bit PCI slots	PC1 - PC4
Speaker	CN4		

Continued on next page...

YOUNG MICRO SYSTEMS, INC.
CROSS P54C-VIP (REV. 1.0)

... continued from previous page

USER CONFIGURABLE SETTINGS		
Function	Jumper	Position
í Factory configured - do not alter	JP1	Open
í Factory configured - do not alter	JP3	Open
í Factory configured - do not alter	JP4	Open
í Factory configured - do not alter	JP5	pins 2 & 3 closed
í Factory configured - do not alter	JP9	Closed
í Factory configured - do not alter	JP10	Closed
í Factory configured - do not alter	JP16	pins 2 & 3 closed
í Factory configured - do not alter	JP18	Closed
í Factory configured - do not alter	JP19	Open
í Factory configured - do not alter	JP25	pins 2 & 3 closed
í Factory configured - do not alter	JP27	pins 2 & 3 closed
í Factory configured - do not alter	JP28	pins 1 & 2 closed
í CMOS memory normal operation	JP30	pins 2 & 3 closed
CMOS memory clear	JP30	pins 1 & 2 closed
í AT speed select fast	JP33	Closed
AT speed select slow	JP33	Open
í Factory configured - do not alter	JP34	Open
í Factory configured - do not alter	JP35	Open
í Flash BIOS type select normal	JP90	pins 1 & 2 closed
Flash BIOS type select programming	JP90	pins 2 & 3 closed

DRAM CONFIGURATION		
Size	Bank 0	Bank 1
2MB	(2) 256K x 36	NONE
4MB	(2) 512K x 36	NONE
4MB	(2) 256K x 36	(2) 256K x 36
8MB	(2) 1M x 36	NONE
16MB	(2) 1M x 36	(2) 1M x 36
32MB	(2) 4M x 36	NONE
40MB	(2) 1M x 36	(2) 4M x 36
64MB	(2) 8M x 36	NONE
64MB	(2) 4M x 36	(2) 4M x 36
128MB	(2) 8M x 36	(2) 8M x 36

CACHE CONFIGURATION				
Size	Bank 0	Bank 1	DIRTY	TAG
256KB	(8) 32K x 8	NONE	(4) 16K x 1	(1) 8K x 8
512KB	(8) 32K x 8	(8) 32K x 8	(4) 64K x 1	(1) 32K x 8
1MB	(8) 128K x 8	NONE	(4) 64K x 1	(1) 128K x 8
2MB	(8) 128K x 8	(8) 128K x 8	(4) 64K x 1	(1) 128K x 8

Continued on next page...

YOUNG MICRO SYSTEMS, INC.
CROSS P54C-VIP (REV. 1.0)

... continued from previous page

CACHE JUMPER CONFIGURATION					
Size	JP6	JP7	JP8	JP11	JP14
256KB	Open	Closed	Closed	1 & 2	1 & 2
512KB	Closed	Closed	Closed	2 & 3	2 & 3
1MB	Closed	Closed	Closed	1 & 2	1 & 2
2MB	Closed	Closed	Closed	2 & 3	2 & 3

Note: Pins designated should be in the closed position.

CACHE JUMPER CONFIGURATION (CON'T)					
Size	JP15	JP94	JP95	JP97	JP98
256KB	1 & 2	N/A	N/A	Open	Open
512KB	2 & 3	N/A	N/A	Open	Open
1MB	1 & 2	1 & 2	1 & 2	Open	Closed
2MB	2 & 3	2 & 3	2 & 3	Closed	Closed

Note: Pins designated should be in the closed position.

CPU SPEED CONFIGURATION		
Speed	JP20	JP21
90MHz	Closed	Closed
100MHz	Closed	Open

AT CLOCK CONFIGURATION		
Type	JP31	JP32
LCLK/2	Open	Open
LCLK/3	Closed	Open
LCLK/4	Open	Closed
LCLK/5	Closed	Closed

VESA WAIT STATE CONFIGURATION	
Wait states	JP43
0 wait states	Open
1 wait state	Closed

BUS SPEED CONFIGURATION	
CPU speed	JP41
<= 33MHz	Open
> 33MHz	Closed