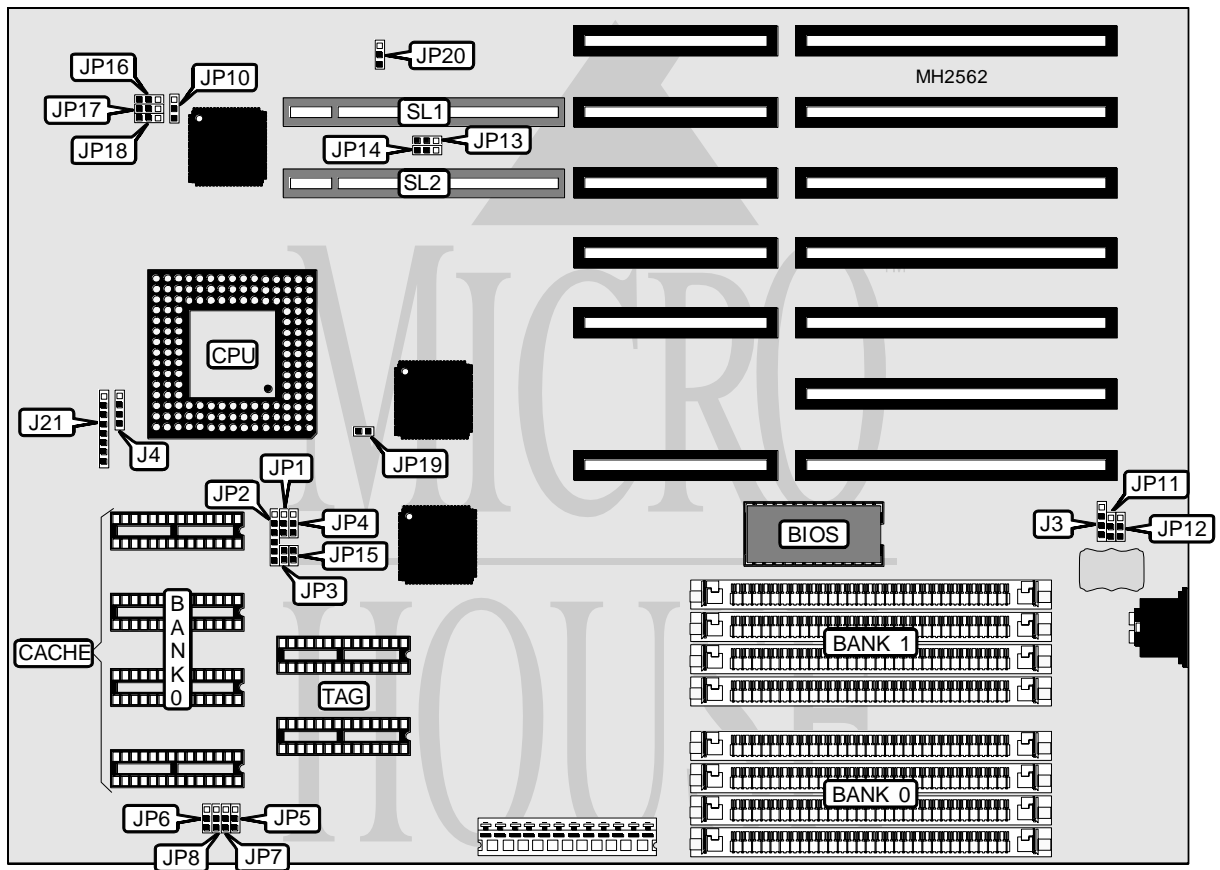


# VTECH INDUSTRIES, INC.

## 486 SERIES (MINI CASE - ASIC II)

<b>Processor</b>	80486SX/80486DX/80486DX2
<b>Processor Speed</b>	25/33/50(internal)/66(internal)MHz
<b>Chip Set</b>	Unidenitfied
<b>Max. Onboard DRAM</b>	32MB
<b>Cache</b>	128KB
<b>BIOS</b>	Unidenitfied
<b>Dimensions</b>	330mm x 218mm
<b>I/O Options</b>	32-bit VESA local bus slots (2)
<b>NPU Options</b>	None



CONNECTIONS			
Purpose	Location	Purpose	Location
External battery	J3	Front panel connector	J21
Speaker	J4	32-bit VESA local bus slots	SL1 & SL2

Continued on next page . . .

# VTECH INDUSTRIES, INC.

## 486 SERIES (MINI CASE - ASIC II)

... continued from previous page

USER CONFIGURABLE SETTINGS		
Function	Jumper	Position
í Factory configured - do not alter	JP1	N/A
í Factory configured - do not alter	JP3	Open
í Factory configured - do not alter	JP10	pins 1 & 2 closed
í CMOS memory normal operation	JP11	pins 1 & 2 closed
CMOS memory clear	JP11	pins 2 & 3 closed
í Battery type select internal	JP12	pins 1 & 2 closed
Battery type select external	JP12	pins 2 & 3 closed
í VESA card select does not support write back cache	JP14	pins 1 & 2 closed
VESA card select supports write back cache	JP14	pins 2 & 3 closed
í Factory configured - do not alter	JP15	N/A
í Factory configured - do not alter	JP19	N/A

DRAM CONFIGURATION		
Size	Bank 0	Bank 1
1MB	(4) 256K x 9	NONE
2MB	(4) 256K x 9	(4) 256K x 9
2MB	(4) 512K x 9	NONE
4MB	(4) 512K x 9	(4) 512K x 9
4MB	(4) 1M x 9	NONE
8MB	(4) 1M x 9	(4) 1M x 9
16MB	(4) 4M x 9	NONE
20MB	(4) 1M x 9	(4) 4M x 9
32MB	(4) 4M x 9	(4) 4M x 9

CACHE CONFIGURATION		
Size	Bank 0	TAG
128KB	(4) 32K x 8	(2) 8K x 8
128KB	(4) 32K x 9	(2) 8K x 9

CACHE JUMPER CONFIGURATION				
Size	JP5	JP6	JP7	JP8
32K x 8	pins 1 & 2 closed	pins 1 & 2 closed	pins 1 & 2 closed	pins 1 & 2 closed
32K x 9	pins 2 & 3 closed	pins 2 & 3 closed	pins 2 & 3 closed	pins 2 & 3 closed

CPU UPGRADE CONFIGURATION	
Type	JP2
None installed	pins 1 & 2, 4 & 5 closed
80486SX/DX/DX2 series installed	pins 2 & 3, 4 & 5 closed
Note: There is a PQFP CPU installed but the location is unidentified. These CPU types are installed in the PGA socket.	

Continued on next page. . .

VTECH INDUSTRIES, INC.  
486 SERIES (MINI CASE - ASIC II)

... continued from previous page

CPU SPEED CONFIGURATION			
Speed	JP16	JP17	JP18
25MHz	Open	Open	Closed
33MHz	Closed	Closed	Open
50MHz	Open	Open	Closed
66MHz	Closed	Closed	Open

BUS SPEED CONFIGURATION			
CPU speed	JP4	JP13	JP20
<= 33MHz	pins 2 & 3 closed	pins 1 & 2 closed	Open
> 33MHz	pins 1 & 2 closed	pins 2 & 3 closed	Closed