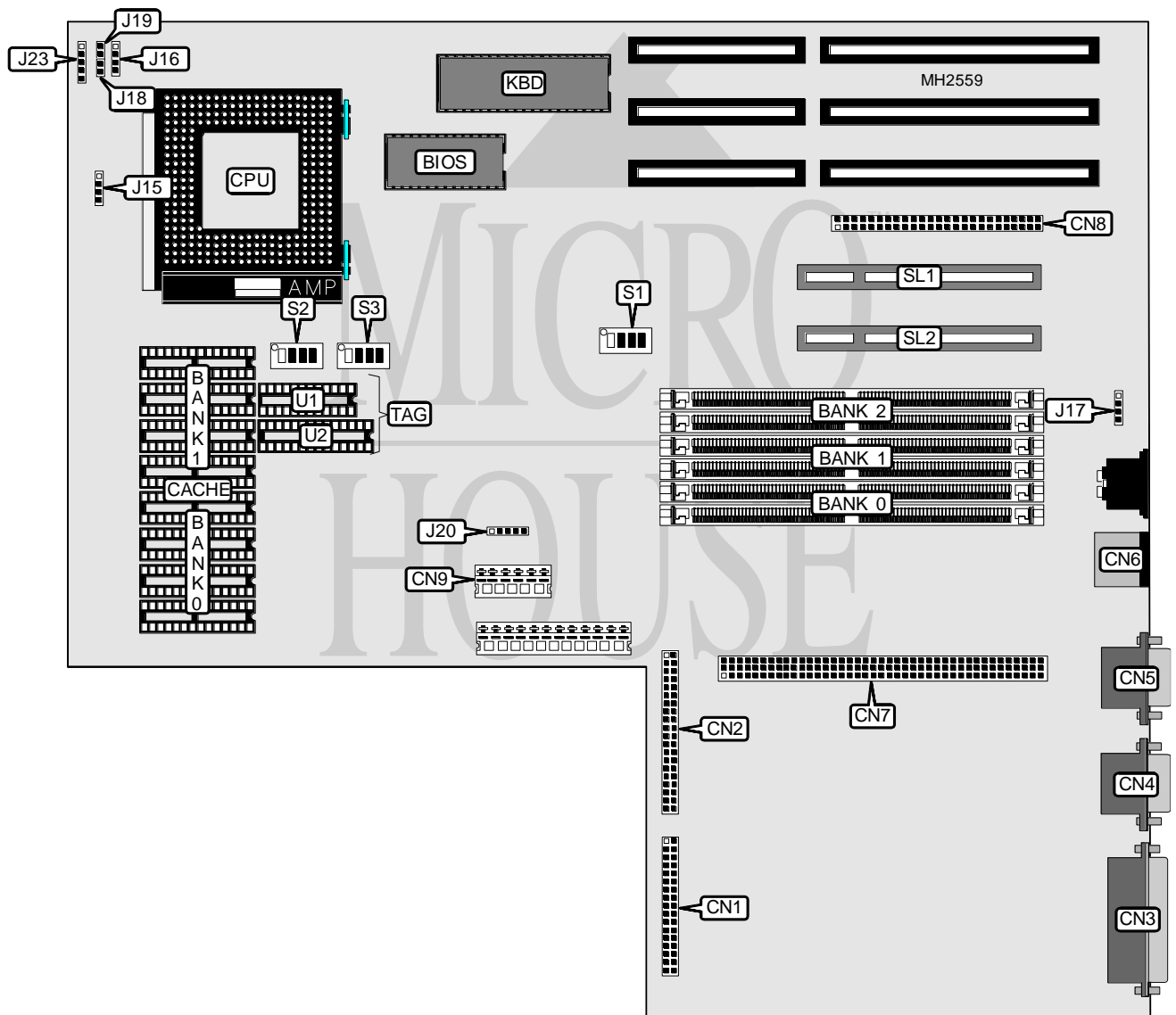


VTECH INDUSTRIES, INC. PLATINUM PCI SERIES 486

Processor	80486SX/80486DX/80486DX2/Pentium Overdrive
Processor Speed	25/33/50(internal)/50/66(internal)MHz
Chip Set	Unidentified
Max. Onboard DRAM	32MB
Cache	128/256/512KB
BIOS	Unidentified
Dimensions	355mm x 304mm
I/O Options	32-bit PCI slots (2), floppy drive interface, green PC connector, IDE interface, SCSI connector, parallel port, PS/2 mouse port, serial ports (2)
NPU Options	None



Continued on next page. . .

VTECH INDUSTRIES, INC.

PLATINUM PCI SERIES 486

... continued from previous page

CONNECTIONS			
Purpose	Location	Purpose	Location
Floppy drive interface	CN1	CPU power connector	J15
IDE interface	CN2	Speaker	J16
Parallel port	CN3	+3.3v power connector	J17
Serial port 1	CN4	Green PC connector	J18
Serial port 2	CN5	Analog speaker	J19
PS/2 mouse port	CN6	Power off control connector	J20
Mezzanine board connector	CN7	Front panel connector	J23
SCSI interface	CN8	32-bit PCI slots	SL1 & SL2
+5.5v power connector	CN9		

USER CONFIGURABLE SETTINGS		
Function	Switch	Position
í TAG chip size select 8K/32K x 8	S1/3	On
TAG chip size select 8K/32K x 9	S1/3	Off
í Cache enabled	S1/4	On
Cache disabled	S1/4	Off

DRAM CONFIGURATION			
Size	Bank 0	Bank 1	Bank 2
2MB	(2) 256K x 36	NONE	NONE
4MB	(2) 256K x 36	(2) 256K x 36	NONE
4MB	(2) 256K x 36	NONE	(2) 256K x 36
6MB	(2) 256K x 36	NONE	(2) 512K x 36
6MB	(2) 256K x 36	(2) 256K x 36	(2) 256K x 36
8MB	(2) 1M x 36	NONE	NONE
8MB	(2) 256K x 36	(2) 256K x 36	(2) 512K x 36
10MB	(2) 256K x 36	(2) 1M x 36	NONE
10MB	(2) 256K x 36	NONE	(2) 1M x 36
10MB	(2) 1M x 36	NONE	(2) 256K x 36
12MB	(2) 256K x 36	(2) 256K x 36	(2) 1M x 36
12MB	(2) 256K x 36	(2) 1M x 36	(2) 256K x 36
12MB	(2) 1M x 36	NONE	(2) 512K x 36
14MB	(2) 256K x 36	(2) 1M x 36	(2) 512K x 36
16MB	(2) 1M x 36	(2) 1M x 36	NONE
16MB	(2) 1M x 36	NONE	(2) 1M x 36
18MB	(2) 256K x 36	NONE	(2) 2M x 36
18MB	(2) 256K x 36	(2) 1M x 36	(2) 1M x 36
18MB	(2) 1M x 36	(2) 1M x 36	(2) 256K x 36
20MB	(2) 256K x 36	(2) 256K x 36	(2) 2M x 36
20MB	(2) 1M x 36	(2) 1M x 36	(2) 512K x 36
24MB	(2) 1M x 36	NONE	(2) 2M x 36
24MB	(2) 1M x 36	(2) 1M x 36	(2) 1M x 36
26MB	(2) 256K x 36	(2) 1M x 36	(2) 2M x 36
32MB	(2) 1M x 36	(2) 1M x 36	(2) 2M x 36

Continued on next page. . .

VTECH INDUSTRIES, INC.
 PLATINUM PCI SERIES 486

... continued from previous page

CACHE CONFIGURATION			
Size	Bank 0	Bank 1	TAG
128KB	(4) 32K x 8	NONE	(1) 8K x 8
128KB	(4) 32K x 8	NONE	(1) 8K x 9
128KB	(4) 32K x 8	NONE	(1) 32K x 8
128KB	(4) 32K x 8	NONE	(1) 32K x 9
256KB	(4) 32K x 8	(4) 32K x 8	(1) 32K x 8
256KB	(4) 32K x 8	(4) 32K x 8	(1) 32K x 9
512KB	(4) 128K x 8	NONE	(1) 32K x 8
512KB	(4) 128K x 8	NONE	(1) 32K x 9

Note: x 8 or x 9 cache and TAG chips may be used.

CACHE SWITCH CONFIGURATION								
Size	S2/1	S2/2	S2/3	S2/4	S3/1	S3/2	S3/3	S3/4
128KB	On	Off	Off	On	Off	Off	Off	Off
128KB	On	Off	Off	Off	On	Off	Off	Off
128KB	On	Off	Off	Off	Off	Off	Off	Off
128KB	On	Off	Off	Off	On	Off	Off	Off
256KB	Off	On	On	Off	Off	Off	Off	Off
256KB	Off	On	On	Off	On	Off	Off	Off
512KB	Off	On	On	Off	Off	On	On	On
512KB	Off	On	On	Off	On	Off	On	On

CACHE SWITCH CONFIGURATION		
Size	S1/1	S1/2
128KB	On	Off
256KB	Off	On
512KB	On	On