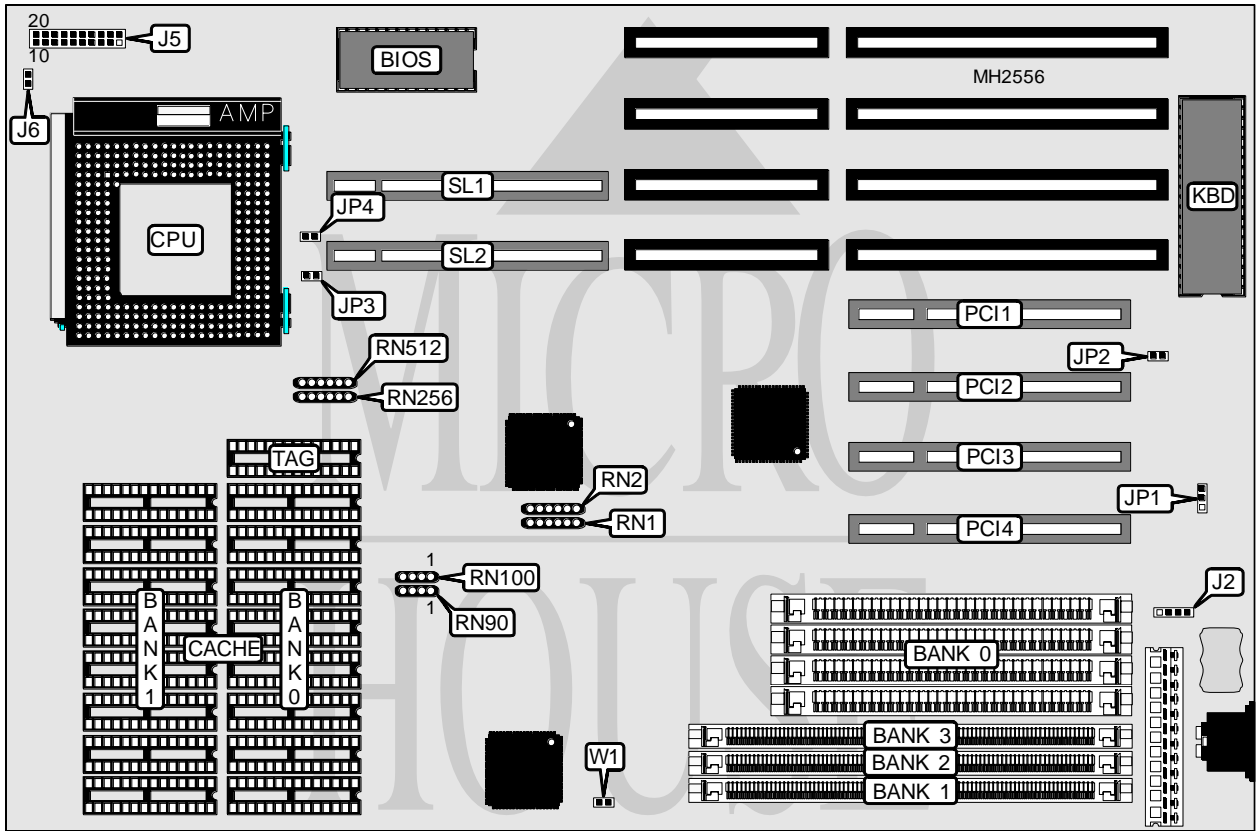


TMC RESEARCH CORPORATION

PCI54PL VERSION 1.0A

Processor	Pentium
Processor Speed	75/90/100MHz
Chip Set	OPTI
Max. Onboard DRAM	128MB
Cache	256/512KB
BIOS	Unidentified
Dimensions	330mm x 218mm
I/O Options	32-bit VESA local bus slots (2), 32-bit PCI slots (4)
NPU Options	None



CONNECTIONS			
Purpose	Location	Purpose	Location
External battery	J2	Power LED & keylock	J5 pins 11 & 15
Speaker	J5 pins 1 & 4	IDE interface LED	J6
Turbo LED	J5 pins 8 & 18	32-bit PCI slots	PCI1 - PCI4
Reset switch	J5 pins 9 & 19	32-bit VESA local bus slots	SL1 & SL2
IDE interface LED	J5 pins 10 & 20		

Continued on next page. . .

TMC RESEARCH CORPORATION

PCI54PL VERSION 1.0A

... continued from previous page

USER CONFIGURABLE SETTINGS		
Function	Jumper/Switch	Position
í CMOS memory normal operation (Internal Battery)	JP1	pins 2 & 3 closed
CMOS memory normal operation (External Battery)	JP1	Open
CMOS memory clear	JP1	pins 1 & 2 closed
í Monitor type select color	JP2	Closed
Monitor type select monochrome	JP2	Open
í Factory configured - do not alter	JP3	N/A

DRAM CONFIGURATION 1			
Size	Bank 0	Bank 1	Bank 2
4MB	(4) 1M x 9	NONE	NONE
8MB	(4) 1M x 9	(1) 1M x 36	NONE
12MB	(4) 1M x 9	(1) 2M x 36	NONE
16MB	(4) 1M x 9	(1) 1M x 36	(1) 2M x 36
16MB	(4) 4M x 9	NONE	NONE
20MB	(4) 1M x 9	(1) 2M x 36	(1) 2M x 36
20MB	(4) 1M x 9	(1) 4M x 36	NONE
32MB	(4) 4M x 9	(1) 4M x 36	NONE
36MB	(4) 1M x 9	(1) 8M x 36	NONE
40MB	(4) 1M x 9	(1) 1M x 36	(1) 8M x 36
44MB	(4) 1M x 9	(1) 2M x 36	(1) 8M x 36
48MB	(4) 4M x 9	(1) 8M x 36	NONE
52MB	(4) 1M x 9	(1) 4M x 36	(1) 8M x 36
64MB	(4) 4M x 9	(1) 4M x 36	(1) 8M x 36
64MB	(4) 16M x 9	NONE	NONE
68MB	(4) 1M x 9	(1) 8M x 36	(1) 8M x 36
80MB	(4) 4M x 9	(1) 8M x 36	(1) 8M x 36
96MB	(4) 16M x 9	(1) 8M x 36	NONE
128MB	(4) 16M x 9	(1) 8M x 36	(1) 8M x 36

DRAM CONFIGURATION 2			
Size	Bank 1	Bank 2	Bank 3
4MB	(1) 1M x 36	NONE	NONE
8MB	(1) 1M x 36	(1) 1M x 36	NONE
8MB	(1) 2M x 36	NONE	NONE
12MB	(1) 1M x 36	(1) 2M x 36	NONE
16MB	(1) 1M x 36	(1) 1M x 36	(1) 2M x 36
16MB	(1) 2M x 36	(1) 2M x 36	NONE
16MB	(1) 4M x 36	NONE	NONE
20MB	(1) 1M x 36	(1) 2M x 36	(1) 2M x 36
20MB	(1) 1M x 36	(1) 4M x 36	NONE
24MB	(1) 2M x 36	(1) 2M x 36	(1) 2M x 36
24MB	(1) 2M x 36	(1) 4M x 36	NONE
32MB	(1) 4M x 36	(1) 4M x 36	NONE
32MB	(1) 8M x 36	NONE	NONE

Continued on next page. . .

TMC RESEARCH CORPORATION

PCI54PL VERSION 1.0A

... continued from previous page

DRAM CONFIGURATION 2 (CON'T)			
Size	Bank 0	Bank 1	Bank 2
36MB	(1) 1M x 36	(1) 8M x 36	NONE
40MB	(1) 1M x 36	(1) 1M x 36	(1) 8M x 36
40MB	(1) 2M x 36	(1) 8M x 36	NONE
44MB	(1) 1M x 36	(1) 2M x 36	(1) 8M x 36
48MB	(1) 2M x 36	(1) 2M x 36	(1) 8M x 36
48MB	(1) 4M x 36	(1) 8M x 36	NONE
52MB	(1) 1M x 36	(1) 4M x 36	(1) 8M x 36
56MB	(1) 2M x 36	(1) 4M x 36	(1) 8M x 36
64MB	(1) 4M x 36	(1) 4M x 36	(1) 8M x 36
64MB	(1) 8M x 36	(1) 8M x 36	NONE
64MB	(1) 16M x 36	NONE	NONE
68MB	(1) 1M x 36	(1) 8M x 36	(1) 8M x 36
72MB	(1) 2M x 36	(1) 8M x 36	(1) 8M x 36
80MB	(1) 4M x 36	(1) 8M x 36	(1) 8M x 36
96MB	(1) 8M x 36	(1) 8M x 36	(1) 8M x 36
96MB	(1) 16M x 36	(1) 8M x 36	NONE
128MB	(1) 16M x 36	(1) 8M x 36	(1) 8M x 36

DRAM RESISTOR CONFIGURATION		
Configuration	RN1	RN2
1	Installed	Not installed
2	Not installed	Installed

CACHE CONFIGURATION			
Size	Bank 0	Bank 1	TAG
256KB	(8) 32K x 8	NONE	(1) 8K x 8 or (1) 32K x 8
512KB	(8) 32K x 8	(8) 32K x 8	(1) 32K x 8

CACHE JUMPER CONFIGURATION		
Size	RN256	RN512
256KB	Installed	Not installed
512KB	Not installed	Installed

CPU SPEED CONFIGURATION		
Speed	RN90	RN100
75MHz	Not installed	pins 1 & 2 installed
90MHz	pins 1 & 2 installed	Not installed
100MHz	Not installed	pins 1 & 2, 3 & 4 installed

VESA WAIT STATE CONFIGURATION	
Wait states	JP4
0 wait states	Open
1 wait state	Closed

Continued on next page. . .

TMC RESEARCH CORPORATION

PCI54PL VERSION 1.0A

... continued from previous page

VESA BUS SAMPLE EDGE CONFIGURATION	
Wait states	W1
0 wait states	Open
1 wait state	Closed