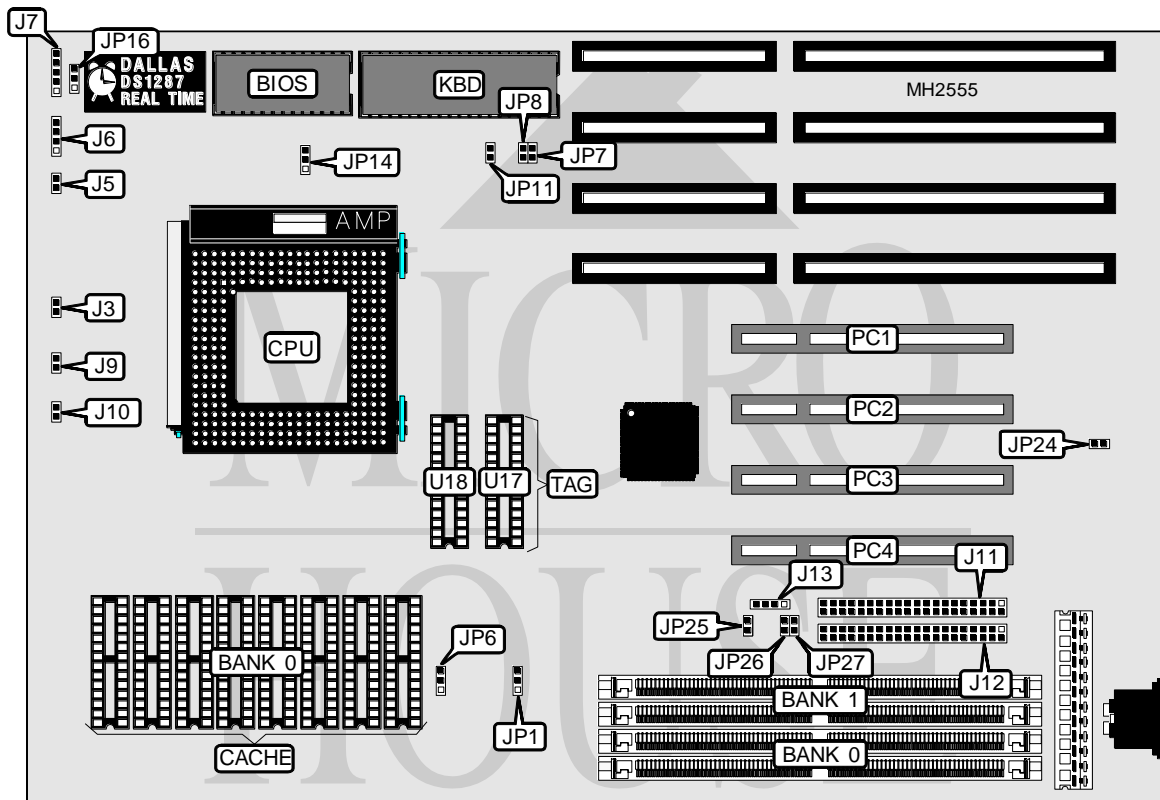


TMC RESEARCH CORPORATION PCI54SP (VER. 1.0)

Processor	Pentium
Processor Speed	75/90/100MHz
Chip Set	SIS
Max. Onboard DRAM	128MB
Cache	256/512KB
BIOS	Unidentified
Dimensions	330mm x 218mm
I/O Options	32-bit PCI slots (4), green PC connector, IDE interfaces (2)
NPU Options	None



CONNECTIONS			
Purpose	Location	Purpose	Location
Turbo LED	J3	Green PC LED	J10
Reset switch	J5	IDE interface (primary)	J11
Speaker	J6	IDE interface (secondary)	J12
Power LED & keylock	J7	IDE interface LED	J13
Green PC connector	J9	32-bit PCI slots	PC1 - PC4

Continued on next page. . .

TMC RESEARCH CORPORATION

PCI54SP (VER. 1.0)

... continued from previous page

USER CONFIGURABLE SETTINGS		
Function	Jumper	Position
í Monitor type select color	JP11	Closed
Monitor type select monochrome	JP11	Open
í Pipeline mode disabled	JP14	pins 1 & 2 closed
Pipeline mode enabled	JP14	pins 2 & 3 closed
í CMOS memory normal operation	JP16	pins 1 & 2 closed
CMOS memory clear	JP16	pins 2 & 3 closed
í Secondary IDE interface enabled	JP24	Closed
Secondary IDE interface disabled	JP24	Open
í PCI IDE clock speed select 33MHz	JP27	Closed
PCI IDE clock speed select 25MHz	JP27	Open

DRAM CONFIGURATION		
Size	Bank 0	Bank 1
2MB	(2) 256K x 36	NONE
4MB	(2) 512K x 36	NONE
8MB	(2) 512K x 36	(2) 512K x 36
8MB	(2) 1M x 36	NONE
16MB	(2) 2M x 36	NONE
20MB	(2) 512K x 36	(2) 2M x 36
32MB	(2) 2M x 36	(2) 2M x 36
32MB	(2) 4M x 36	NONE
36MB	(2) 512K x 36	(2) 4M x 36
48MB	(2) 2M x 36	(2) 4M x 36
64MB	(2) 8M x 36	NONE
80MB	(2) 2M x 36	(2) 8M x 36
128MB	(2) 8M x 36	(2) 8M x 36
128MB	(2) 16M x 36	NONE

CACHE CONFIGURATION			
Size	Bank 0	TAG (U17)	TAG (U18)
256KB	(8) 32K x 8	(4) 16K x 8	(1) 8K x 8
512KB	(8) 64K x 8	(4) 32K x 8	(1) 32K x 8

CACHE JUMPER CONFIGURATION		
Size	JP1	JP6
256KB	pins 1 & 2 closed	pins 2 & 3 closed
512KB	pins 2 & 3 closed	pins 1 & 2 closed

CPU SPEED CONFIGURATION		
Speed	JP7	JP8
75MHz	Open	Open
90MHz	Closed	Open
100MHz	Closed	Closed

Continued on next page. . .

TMC RESEARCH CORPORATION
PCI54SP (VER. 1.0)*... continued from previous page*

PCI IDE MODE CONFIGURATION			
Mode	Cycle Time	JP25	JP26
0	$\geq 600\text{ns}$	Closed	Closed
1	$\geq 383\text{ns}$	Closed	Open
2	$\geq 240\text{ns}$	Open	Closed
3	$\geq 180\text{ns}$	Open	Open