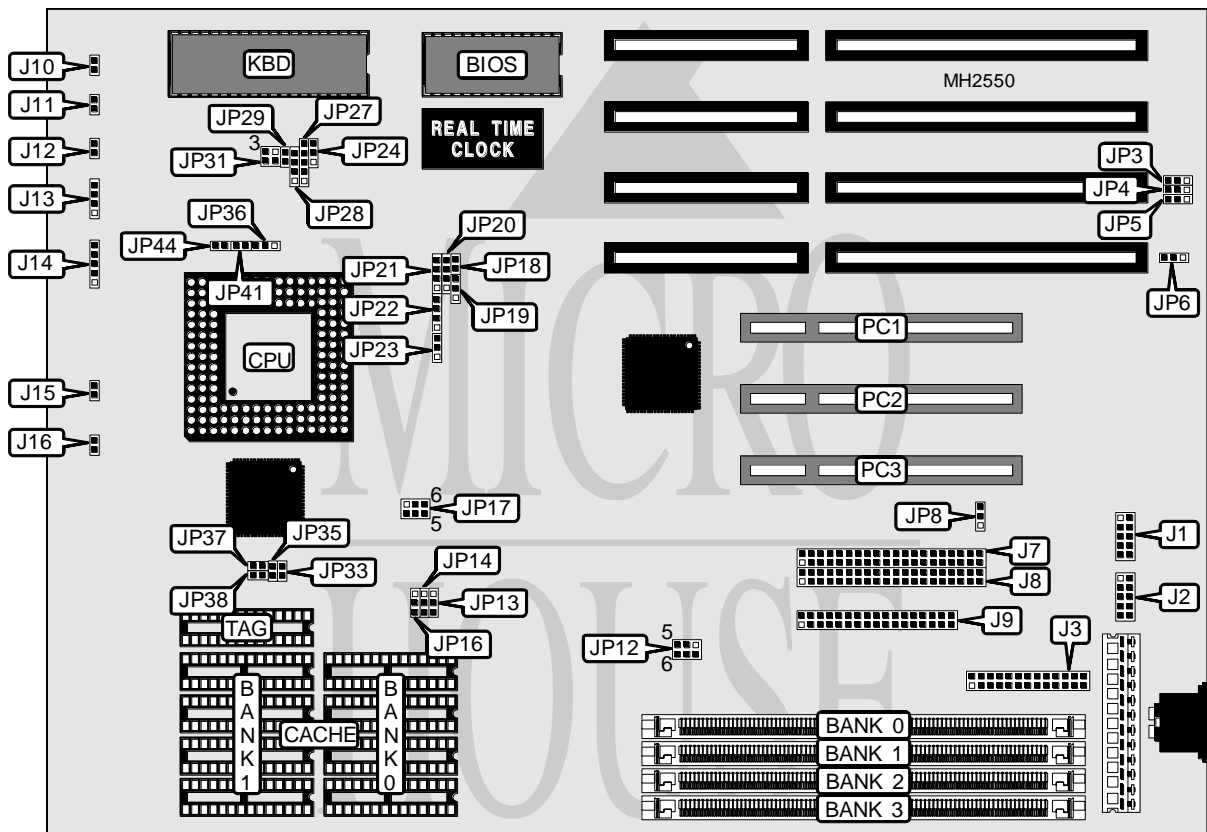


ELITEGROUP COMPUTER SYSTEMS, INC.

UM8810P-AIO

Processor	CX486S/SL80486SX/80486SX/80487SX/SL80486SX2/AM486DX/CX486DX/ SL80486DX/80486DX/AM846DXL/AM486DXL2/AM486DX2/CX486DX2/ SL80486DX2/80486DX2/80486DX2-WB/U5S/U5DS/80486DX4/Pentium Overdrive
Processor Speed	25/33/40/50(internal)/50/66(internal)/75(internal)/100(internal)MHz
Chip Set	UMC
Max. Onboard DRAM	64MB
Cache	128/256/512KB
BIOS	Award
Dimensions	254mm x 218mm
I/O Options	32-bit PCI slots (3), floppy drive interface, green PC connector, IDE interfaces (2), parallel port, serial ports (2)
NPU Options	None



CONNECTIONS			
Purpose	Location	Purpose	Location
Serial port 2	J1	Turbo LED	J11
Serial port 1	J2	Reset switch	J12
Parallel port	J3	Speaker	J13
IDE interface (primary)	J7	Power LED & keylock	J14
IDE interface (secondary)	J8	Green PC connector	J15
Floppy drive interface	J9	IDE interface LED	J16
Turbo switch	J10	32-bit PCI slots	PC1 - PC3

Continued on next page...

ELITEGROUP COMPUTER SYSTEMS, INC.

UM8810P - A10

... continued from previous page

USER CONFIGURABLE SETTINGS		
Function	Jumper	Position
í Parallel port IRQ select IRQ7	JP3	pins 1 & 2 closed
Parallel port IRQ select IRQ5	JP3	pins 2 & 3 closed
í BIOS type select EPROM	JP6	Open
BIOS type select flash ROM 5v	JP6	pins 1 & 2 closed
BIOS type select flash ROM 12v	JP6	pins 2 & 3 closed
í On board 37C665 enabled	JP8	pins 1 & 2 closed
On board 37C665 disabled	JP8	pins 2 & 3 closed
í Factory configured - do not alter	JP12	Open

DRAM CONFIGURATION				
Size	Bank 0	Bank 1	Bank 2	Bank 3
4MB	(1) 1M x 36	NONE	NONE	NONE
4MB	NONE	(1) 1M x 36	NONE	NONE
8MB	(1) 1M x 36	(1) 1M x 36	NONE	NONE
8MB	(1) 2M x 36	NONE	NONE	NONE
8MB	NONE	(1) 2M x 36	NONE	NONE
8MB	(1) 1M x 36	NONE	(1) 1M x 36	NONE
8MB	NONE	(1) 1M x 36	NONE	(1) 1M x 36
16MB	(1) 2M x 36	(1) 2M x 36	NONE	NONE
16MB	(1) 4M x 36	NONE	NONE	NONE
16MB	NONE	(1) 4M x 36	NONE	NONE
16MB	(1) 1M x 36	(1) 1M x 36	(1) 1M x 36	(1) 1M x 36
16MB	(1) 2M x 36	NONE	(1) 2M x 36	NONE
16MB	NONE	(1) 2M x 36	NONE	(1) 2M x 36
32MB	(1) 4M x 36	(1) 4M x 36	NONE	NONE
32MB	(1) 2M x 36	(1) 2M x 36	(1) 2M x 36	(1) 2M x 36
32MB	(1) 4M x 36	NONE	(1) 4M x 36	NONE
32MB	NONE	(1) 4M x 36	NONE	(1) 4M x 36
64MB	(1) 4M x 36	(1) 4M x 36	(1) 4M x 36	(1) 4M x 36

CACHE CONFIGURATION			
Size	Bank 0	Bank 1	TAG
128KB	(4) 32K x 8	NONE	(1) 32K x 8
256KB	(4) 32K x 8	(4) 32K x 8	(1) 32K x 8
512KB	(4) 64K x 8	(4) 64K x 8	(1) 32K x 8
512KB	(4) 128K x 8	NONE	(1) 32K x 8

CACHE JUMPER CONFIGURATION					
Size	JP13	JP14	JP16	JP33	JP35
128KB	Open	1 & 2	2 & 3	Open	Open
256KB	Open	2 & 3	1 & 2	Open	Closed
512KB	Open	2 & 3	1 & 2	Open	Closed
512KB	1 & 2	2 & 3	2 & 3	Closed	Closed

Note: Pins designated should be in the closed position.

Continued on next page. . .

ELITEGROUP COMPUTER SYSTEMS, INC.

UM8810P-AIO

... continued from previous page

CPU TYPE CONFIGURATION						
Type	JP18	JP19	JP20	JP21	JP22	JP23
CX486S	Open	2 & 3	2 & 3	Open	2 & 3	2 & 3
SL80486SX	Open	Open	2 & 3	Open	1 & 2	Open
80486SX	Open	Open	2 & 3	Open	Open	Open
80487SX	Open	Open	1 & 2, 3 & 4	2 & 3	Open	Open
SL80486SX2	Open	Open	2 & 3	Open	1 & 2	Open
AM486DX	Open	Open	1 & 2, 3 & 4	1 & 2	Open	Open
CX486DX	Open	2 & 3	1 & 2, 3 & 4	1 & 2	2 & 3	2 & 3
SL80486DX	Open	Open	1 & 2, 3 & 4	1 & 2	1 & 2	Open
80486DX	Open	Open	1 & 2, 3 & 4	1 & 2	Open	Open
AM486DXL	Open	Open	1 & 2, 3 & 4	1 & 2, 3 & 4	Open	Open
AM486DXL2	Open	Open	1 & 2, 3 & 4	1 & 2, 3 & 4	Open	Open
AM486DX2	Open	Open	1 & 2, 3 & 4	1 & 2	Open	Open
CX486DX2	Open	2 & 3	1 & 2, 3 & 4	1 & 2	2 & 3	2 & 3
SL80486DX2	Open	Open	1 & 2, 3 & 4	1 & 2	1 & 2	Open
80486DX2	Open	Open	1 & 2, 3 & 4	1 & 2	Open	Open
80486DX2 - WB	Closed	Open	1 & 2, 3 & 4	1 & 2	1 & 2, 3 & 4	Open
U5S	Open	Open	2 & 3	1 & 2, 3 & 4	Open	Open
U5DS	Open	Open	1 & 2, 3 & 4	1 & 2, 3 & 4	Open	Open
80486DX4	Open	Open	1 & 2, 3 & 4	1 & 2	1 & 2	Open
P24T	Open	2 & 3	1 & 2, 3 & 4	1 & 2	1 & 2	1 & 2

Note: Pins designated should be in the closed position.

CPU TYPE CONFIGURATION (CON'T)						
Type	JP24	JP27	JP28	JP36	JP37	JP38
CX486S	2 & 3	1 & 2, 3 & 4	1 & 2	1 & 2	1 & 2	2 & 3
SL80486SX	2 & 3	2 & 3, 4 & 5	Open	1 & 2	1 & 2	2 & 3
80486SX	1 & 2	Open	Open	Open	1 & 2	1 & 2
80487SX	1 & 2	Open	Open	Open	1 & 2	1 & 2
SL80486SX2	2 & 3	2 & 3, 4 & 5	Open	1 & 2	1 & 2	2 & 3
AM486DX	1 & 2	Open	Open	Open	1 & 2	1 & 2
CX486DX	2 & 3	1 & 2, 3 & 4	2 & 3	1 & 2	1 & 2	2 & 3
SL80486DX	2 & 3	2 & 3, 4 & 5	Open	1 & 2	1 & 2	1 & 2
80486DX	1 & 2	Open	Open	Open	1 & 2	1 & 2
AM486DXL	1 & 2	Open	3 & 4	2 & 3	2 & 3	1 & 2
AM486DXL2	1 & 2	Open	3 & 4	2 & 3	2 & 3	1 & 2
AM486DX2	1 & 2	Open	Open	Open	1 & 2	1 & 2
CX486DX2	2 & 3	1 & 2, 3 & 4	2 & 3	1 & 2	1 & 2	2 & 3
SL80486DX2	2 & 3	2 & 3, 4 & 5	Open	1 & 2	1 & 2	2 & 3
80486DX2	1 & 2	Open	Open	Open	1 & 2	1 & 2
80486DX2 - WB	2 & 3	2 & 3, 4 & 5	Open	1 & 2	1 & 2	1 & 2
U5S	1 & 2	Open	3 & 4	2 & 3	2 & 3	1 & 2
U5DS	1 & 2	Open	3 & 4	2 & 3	2 & 3	1 & 2
80486DX4	2 & 3	2 & 3, 4 & 5	Open	1 & 2	1 & 2	1 & 2
P24T	2 & 3	2 & 3, 4 & 5	2 & 3	1 & 2	1 & 2	1 & 2

Note: Pins designated should be in the closed position.

ELITEGROUP COMPUTER SYSTEMS, INC.

UM8810P-AIO

... continued from previous page

CPU TYPE CONFIGURATION		
Size	JP41	JP44
All CPU types	Open	Open
Pentium Overdrive only	Closed	Closed

CPU SPEED CONFIGURATION	
Speed	JP17
25MHz	pins 1 & 2 closed
33MHz	pins 1 & 2, 3 & 4, 5 & 6 closed
40MHz	pins 1 & 2, 3 & 4 closed
50iMHz	pins 1 & 2 closed
50MHz	pins 5 & 6 closed
66iMHz	pins 1 & 2, 3 & 4, 5 & 6 closed
75iMHz	pins 1 & 2 closed
100iMHz	pins 1 & 2, 3 & 4, 5 & 6 closed

CPU CLOCK CONFIGURATION (80486DX4)	
Speed	JP29
2x	Closed
3x	Open

CPU VOLTAGE CONFIGURATION	
Voltage	JP31
3.3v	pins 1 & 2 closed
5.0v	pins 3 & 4 closed

PARALLEL PORT DACK CONFIGURATION		
Size	JP4	JP5
DRQ3/DACK 3	pins 1 & 2 closed	pins 2 & 3 closed
DRQ1/DACK 1	pins 2 & 3 closed	pins 1 & 2 closed