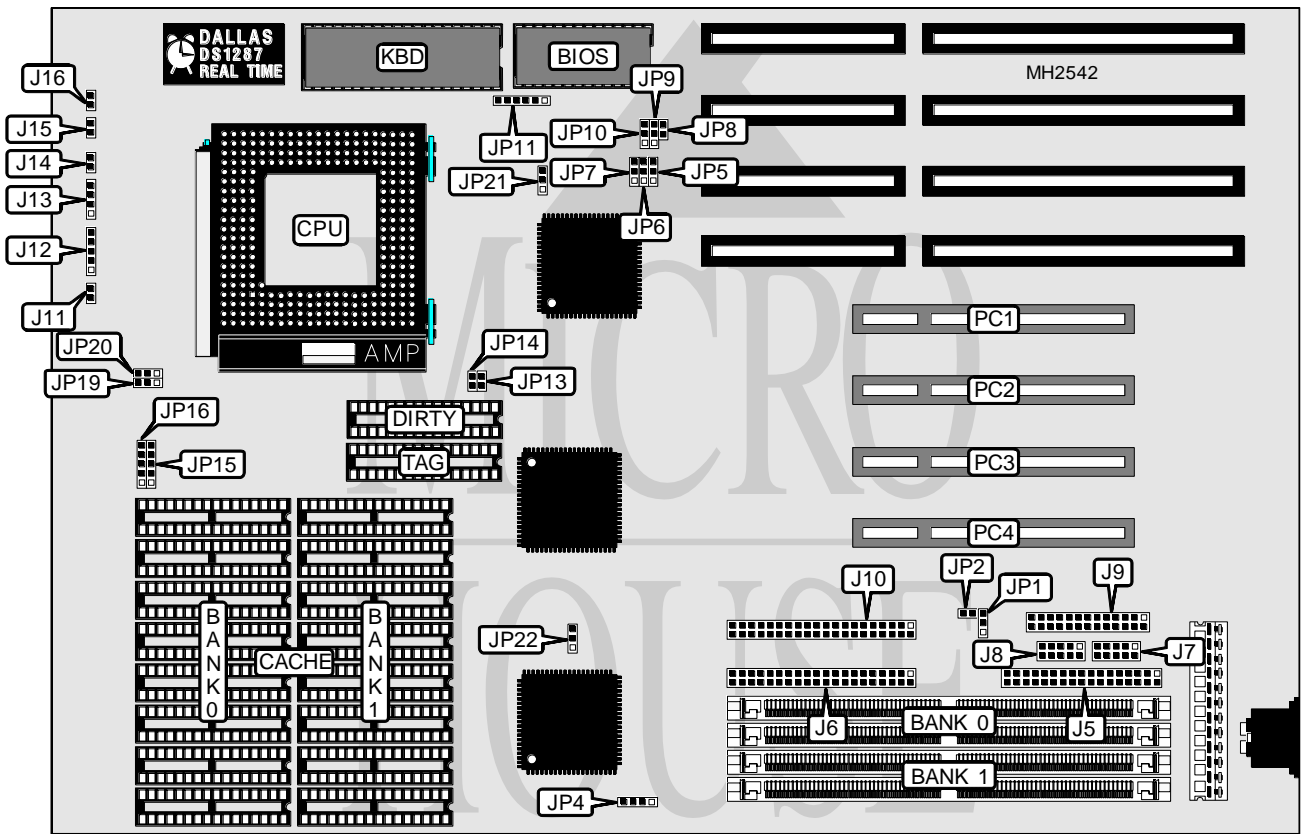


# ELITEGROUP COMPUTER SYSTEMS, INC.

## SI5PI AIO (REV. 2)

<b>Processor</b>	Pentium
<b>Processor Speed</b>	60/66MHz
<b>Chip Set</b>	SIS
<b>Max. Onboard DRAM</b>	128MB
<b>Cache</b>	256/512/1024KB
<b>BIOS</b>	Award
<b>Dimensions</b>	330mm x 218mm
<b>I/O Options</b>	32-bit PCI slots (4), floppy drive interface, IDE interfaces (2), parallel port, serial ports (2)
<b>NPU Options</b>	None



CONNECTIONS			
Purpose	Location	Purpose	Location
Floppy drive interface	J5	Power LED & keylock	J12
IDE interface (primary)	J6	Speaker	J13
Serial port 1	J7	Reset switch	J14
Serial port 2	J8	Turbo LED	J15
Parallel port	J9	Turbo switch	J16
IDE interface (secondary)	J10	32-bit PCI slots	PC1 - PC4
IDE interface LED	J11		

Continued on next page . . .

# ELITEGROUP COMPUTER SYSTEMS, INC.

## SI5PI AIO (REV. 2)

... continued from previous page

USER CONFIGURABLE SETTINGS		
Function	Jumper	Position
í On board multi I/O enabled	JP1	pins 1 & 2 closed
On board multi I/O disabled	JP1	pins 2 & 3 closed
í IDE interface enabled	JP2	Open
IDE interface disabled	JP2	Closed
í Parallel port mode select normal	JP8	Open
Parallel port mode select ECP	JP8	Closed
í BIOS type select EPROM	JP11	pins 2 & 3, 4 & 5 closed
BIOS type select flash	JP11	pins 1 & 2, 5 & 6 closed
í Parallel port IRQ select IRQ7	JP21	pins 1 & 2 closed
Parallel port IRQ select IRQ5	JP21	pins 2 & 3 closed
í Parity check enabled	JP22	pins 1 & 2 closed
Parity check disabled	JP22	pins 2 & 3 closed

DRAM CONFIGURATION		
Size	Bank 0	Bank 1
2MB	(2) 256K x 36	NONE
4MB	(2) 256K x 36	(2) 256K x 36
4MB	(2) 512K x 36	NONE
8MB	(2) 512K x 36	(2) 512K x 36
8MB	(2) 1M x 36	NONE
16MB	(2) 1M x 36	(2) 1M x 36
16MB	(2) 2M x 36	NONE
20MB	(2) 256K x 36	(2) 2M x 36
32MB	(2) 2M x 36	(2) 2M x 36
32MB	(2) 4M x 36	NONE
36MB	(2) 512K x 36	(2) 4M x 36
40MB	(2) 1M x 36	(2) 4M x 36
48MB	(2) 2M x 36	(2) 4M x 36
64MB	(2) 4M x 36	(2) 4M x 36
64MB	(2) 8M x 36	NONE
80MB	(2) 2M x 36	(2) 8M x 36
128MB	(2) 8M x 36	(2) 8M x 36
128MB	(2) 16M x 36	NONE

DRAM JUMPER CONFIGURATION	
Size	JP4
2MB	pins 2 & 3 closed
4MB	pins 2 & 3 closed
4MB	pins 1 & 2, 3 & 4 closed
8MB	pins 1 & 2, 3 & 4 closed
8MB	pins 2 & 3 closed
16MB	pins 2 & 3 closed
16MB	pins 1 & 2, 3 & 4 closed
20MB	pins 1 & 2, 3 & 4 closed

Continued on next page. . .

# ELITEGROUP COMPUTER SYSTEMS, INC.

## SI5PI AIO (REV. 2)

... continued from previous page

DRAM JUMPER CONFIGURATION (CON'T)	
Size	JP4
32MB	pins 1 & 2, 3 & 4 closed
32MB	pins 2 & 3 closed
36MB	pins 1 & 2, 3 & 4 closed
40MB	pins 2 & 3 closed
48MB	pins 1 & 2, 3 & 4 closed
64MB	pins 2 & 3 closed
64MB	pins 1 & 2, 3 & 4 closed
80MB	pins 1 & 2, 3 & 4 closed
128MB	pins 1 & 2, 3 & 4 closed
128MB	pins 2 & 3 closed

CACHE CONFIGURATION				
Size	Bank 0	Bank 1	TAG	DIRTY
256KB	(8) 32K x 8	NONE	(1) 8K x 8	(1) 8K x 8
512KB	(8) 32K x 8	(8) 32K x 8	(1) 32K x 8	(1) 32K x 8
512KB	(8) 64K x 8	NONE	(1) 32K x 8	(1) 32K x 8
1MB	(8) 64K x 8	(8) 64K x 8	(1) 32K x 8	(1) 32K x 8
1MB	(8) 128K x 8	NONE	(1) 32K x 8	(1) 32K x 8

CACHE JUMPER CONFIGURATION				
Size	JP13	JP14	JP15	JP16
256KB	Open	Open	Open	1 & 2, 3 & 4
512KB	Open	Closed	Open	2 & 3, 4 & 5
512KB	Open	Closed	1 & 2	1 & 2, 3 & 4
1MB	Closed	Closed	2 & 3	2 & 3, 4 & 5
1MB	Closed	Closed	1 & 2, 3 & 4	1 & 2, 3 & 4

Note: Pins designated should be in the closed position.

CPU SPEED CONFIGURATION			
Speed	JP5	JP6	JP7
60MHz	pins 1 & 2 closed	pins 2 & 3 closed	pins 1 & 2 closed
66MHz	pins 2 & 3 closed	pins 1 & 2 closed	pins 2 & 3 closed

CPU SIGNAL CONFIGURATION		
Setting	JP19	JP20
Write back	pins 1 & 2 closed	N/A
Write through	pins 2 & 3 closed	N/A
Always invalidated	N/A	pins 1 & 2 closed
Write to invalidated	N/A	pins 2 & 3 closed

DMA CONFIGURATION		
DRQ/DACK	JP9	JP10
DRQ1/DACK1	pins 2 & 3 closed	pins 1 & 2 closed
DRQ3/DACK3	pins 1 & 2 closed	pins 2 & 3 closed