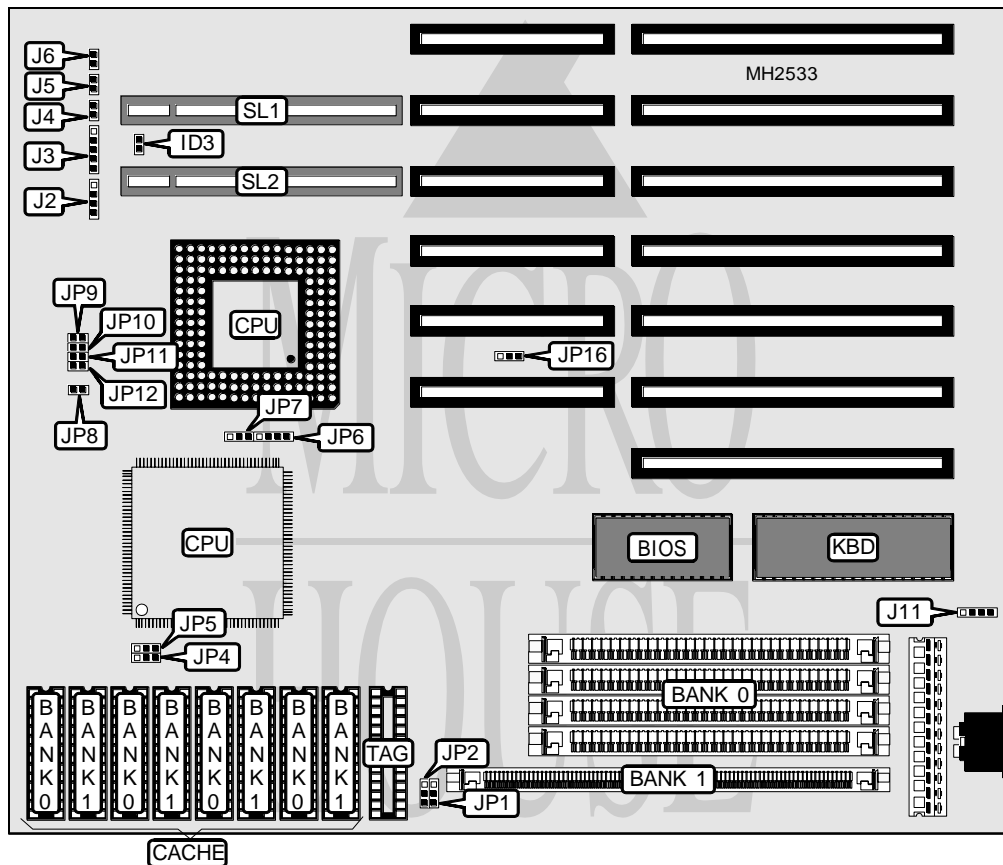


# UNIDENTIFIED

## 486SX/DX/DX2

<b>Processor</b>	80486SX/80487SX/80486DX/80486DX2
<b>Processor Speed</b>	16/20/25/33/40/50(internal)/50/66(internal)MHz
<b>Chip Set</b>	UMC
<b>Max. Onboard DRAM</b>	64MB
<b>Cache</b>	64/128/256KB
<b>BIOS</b>	Award
<b>Dimensions</b>	254mm x 220mm
<b>I/O Options</b>	32-bit VESA local bus slots (2)
<b>NPU Options</b>	None



CONNECTIONS			
Purpose	Location	Purpose	Location
Speaker	J2	Reset switch	J6
Power LED & keylock	J3	External battery	J11
Turbo switch	J4	32-bit VESA local bus slots	SL1 & SL2
Turbo LED	J5		

Continued on next page . . .

# UNIDENTIFIED

## 486SX/DX/DX2

... continued from previous page

USER CONFIGURABLE SETTINGS		
Function	Jumper	Position
í PQFP CPU disabled	JP8	Open
PQFP CPU enabled	JP8	Closed
í VESA video card select normal	JP16	pins 1 & 2 closed
VESA video card select Power A9000	JP16	pins 2 & 3 closed

DRAM CONFIGURATION		
Size	Bank 0	Bank 1
1MB	(4) 256K x 9	NONE
1MB	NONE	(1) 256K x 36
2MB	(4) 256K x 9	(1) 256K x 36
4MB	(4) 1M x 9	NONE
4MB	NONE	(1) 1M x 36
5MB	(4) 1M x 9	(1) 256K x 36
8MB	(4) 1M x 9	(1) 1M x 36
16MB	(4) 4M x 9	NONE
16MB	NONE	(1) 4M x 36
17MB	(4) 4M x 9	(1) 256K x 36
20MB	(4) 4M x 9	(1) 1M x 36
32MB	(4) 4M x 9	(1) 4M x 36
64MB	(4) 16M x 9	NONE

CACHE CONFIGURATION			
Size	Bank 0	Bank 1	TAG
64KB	(4) 8K x 8	(4) 8K x 8	(1) 8K x 8
128KB	(4) 32K x 8	NONE	(1) 8K x 8
256KB	(4) 32K x 8	(4) 32K x 8	(1) 32K x 8

CACHE JUMPER CONFIGURATION				
Size	JP1	JP2	JP4	JP5
64KB	pins 1 & 2 closed	pins 1 & 2 closed	pins 2 & 3 closed	pins 1 & 2 closed
128KB	pins 2 & 3 closed	pins 2 & 3 closed	pins 1 & 2 closed	pins 1 & 2 closed
256KB	pins 1 & 2 closed	pins 1 & 2 closed	pins 1 & 2 closed	pins 2 & 3 closed

CPU TYPE CONFIGURATION		
Type	JP6	JP7
80486SX	pins 2 & 3 closed	Open
80487SX	pins 1 & 2, 3 & 4 closed	pins 2 & 3 closed
80486DX	pins 1 & 2, 3 & 4 closed	pins 1 & 2 closed
80486DX2	pins 1 & 2, 3 & 4 closed	pins 1 & 2 closed

Continued on next page. . .

# UNIDENTIFIED

## 486SX/DX/DX2

... continued from previous page

CPU SPEED CONFIGURATION				
Speed	JP9	JP10	JP11	JP12
16MHz	Closed	Closed	Closed	Closed
20MHz	Open	Closed	Closed	Open
25MHz	Closed	Open	Closed	Open
33MHz	Closed	Closed	Open	Open
40MHz	Open	Open	Closed	Open
50MHz	Closed	Open	Closed	Open
50MHz	Open	Closed	Open	Open
66MHz	Closed	Closed	Open	Open

BUS SPEED CONFIGURATION	
CPU speed	ID3
<= 33MHz	Open
> 33MHz	Closed