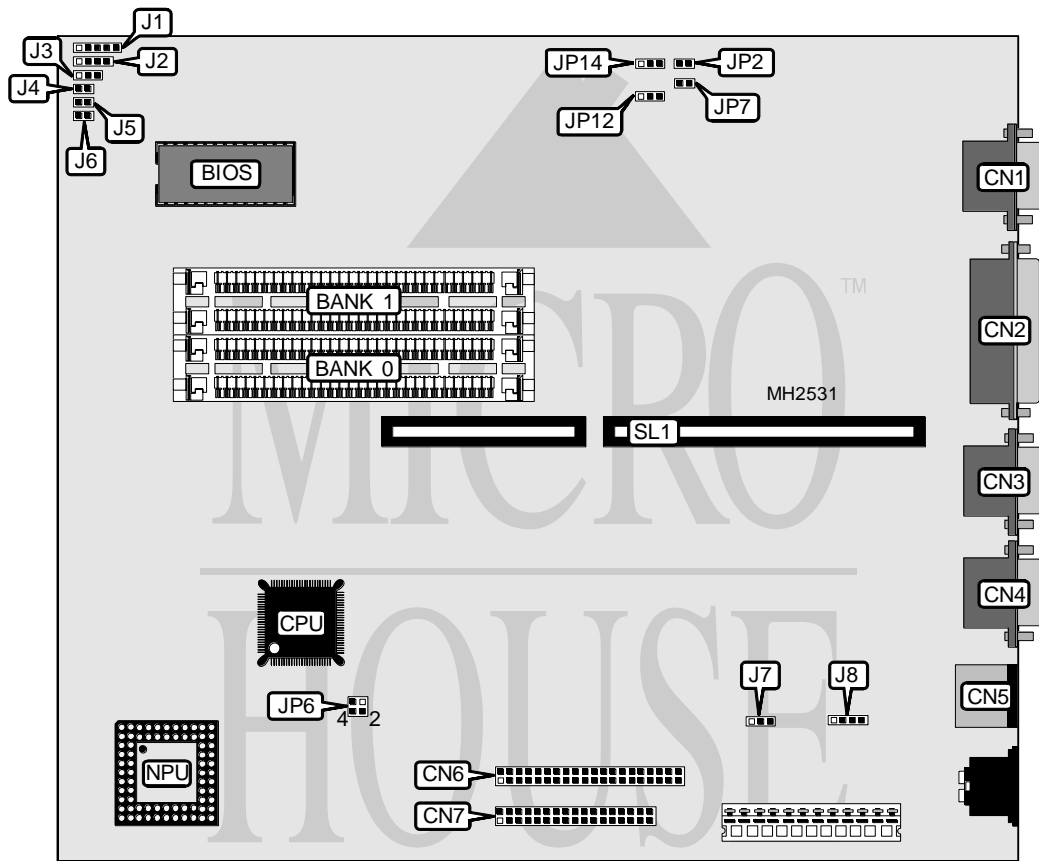


UNIDENTIFIED 386SX MAINBOARD

Processor	80386SX
Processor Speed	16/20/25/33MHz
Chip Set	Unidentified
Max. Onboard DRAM	16MB
Cache	None
BIOS	Award
Dimensions	254mm x 220mm
I/O Options	Floppy drive interface, IDE interface, parallel port, PS/2 mouse port, serial ports (2), VGA port
NPU Options	80387SX



CONNECTIONS			
Purpose	Location	Purpose	Location
VGA port	CN1	Speaker	J2
Parallel port	CN2	IDE interface LED	J3
Serial port 1	CN3	Reset switch	J4
Serial port 2	CN4	Turbo switch	J5
PS/2 mouse port	CN5	Turbo LED	J6
IDE interface	CN6	External battery	J8
Floppy drive interface	CN7	Riser Card	SL1
Power LED & keylock	J1		

Continued on next page...

UNIDENTIFIED 386SX MAINBOARD

... continued from previous page

USER CONFIGURABLE SETTINGS		
Function	Jumper	Position
í Battery type select internal	J7	pins 1 & 2 closed
Battery type select external	J7	pins 2 & 3 closed
í Monitor type select monochrome	JP2	Closed
Monitor type select color	JP2	Open
í CMOS memory normal operation	JP6	pins 1 & 3 closed
CMOS memory clear	JP6	pins 2 & 4 closed
í Video mode select interlaced	JP7	Closed
Video mode select non-interlaced	JP7	Open
í On board VGA enabled	JP12	pins 2 & 3 closed
On board VGA disabled	JP12	pins 1 & 2 closed
í Monitor type select VESA	JP14	pins 1 & 2 closed
Monitor type select VGA	JP14	pins 2 & 3 closed

DRAM CONFIGURATION		
Size	Bank 0	Bank 1
512KB	(2) 256K x 9	NONE
1MB	(2) 256K x 9	(2) 256K x 9
2MB	(2) 1M x 9	NONE
4MB	(2) 1M x 9	(2) 1M x 9
8MB	(2) 4M x 9	NONE
16MB	(2) 4M x 9	(2) 4M x 9