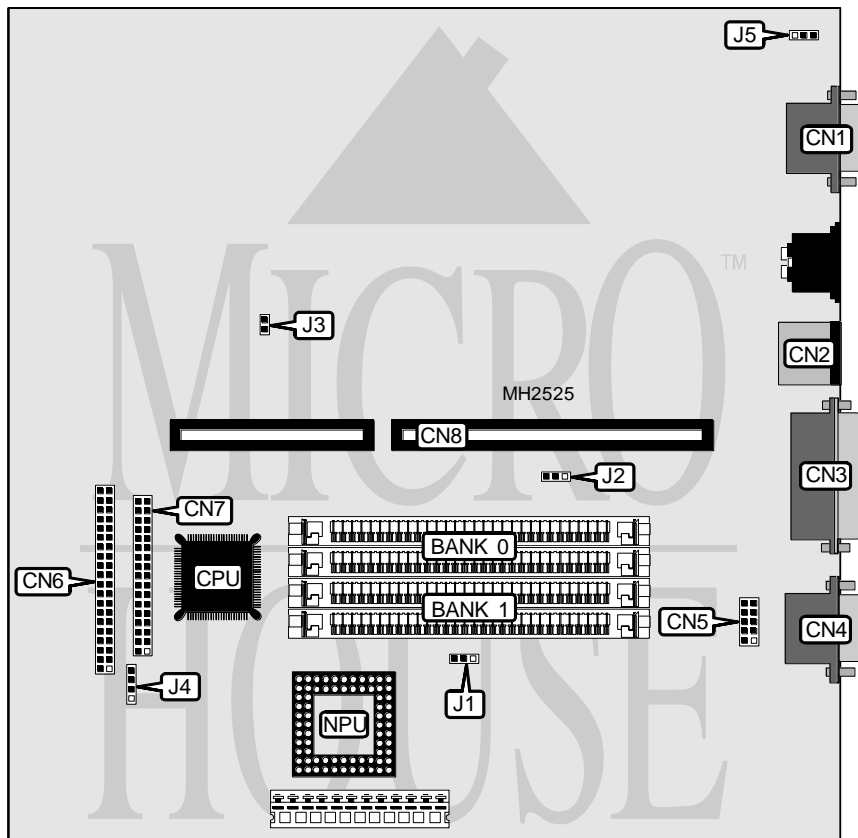


ICL

CL386S, CL386S/25, CS386S, CS386S/25

Processor	80386SX
Processor Speed	20/25MHz
Chip Set	Texas Instruments
Max. Onboard DRAM	16MB
Cache	None
BIOS	ICL
Dimensions	430mm x 352mm
I/O Options	Floppy drive interface, IDE interface, parallel port, serial ports (2), VGA port
NPU Options	80387SX



CONNECTIONS			
Purpose	Location	Purpose	Location
VGA port	CN1	IDE interface	CN6
PS/2 mouse port	CN2	Floppy drive interface	CN7
Parallel port	CN3	Riser Card	CN8
Serial port 1	CN4	Reset switch	J3
Serial port 2	CN5	IDE interface LED	J4

Continued on next page. . .

ICL

CL386S, CL386S/25

... continued from previous page

USER CONFIGURABLE SETTINGS		
Function	Jumper	Position
í CMOS memory normal operation	J1	pins 1 & 2 closed
CMOS memory clear	J1	pins 2 & 3 closed
í Factory configured - do not alter	J2	N/A
í On board VGA enabled	J5	pins 2 & 3 closed
On board VGA disabled	J5	pins 1 & 2 closed

DRAM CONFIGURATION		
Size	Bank 0	Bank 1
2MB	(2) 1M x 9	NONE
4MB	(2) 1M x 9	(2) 1M x 9
8MB	(2) 4M x 9	NONE
16MB	(2) 4M x 9	(2) 4M x 9