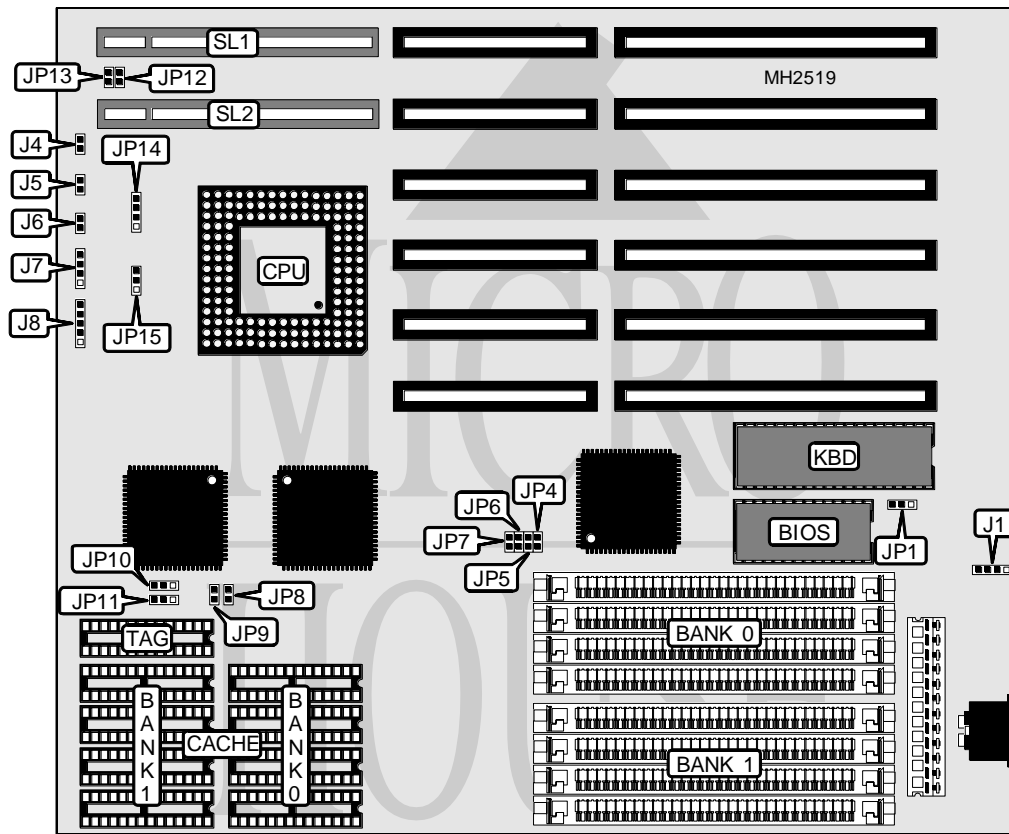


UNIDENTIFIED VL486

Processor	80486SX/80487SX/80486DX/ODP486SX/80486DX2
Processor Speed	25/33/40/50(internal)/50/66(internal)MHz
Chip Set	UMC
Max. Onboard DRAM	32MB
Cache	64/128/256KB
BIOS	AMI
Dimensions	254mm x 220mm
I/O Options	32-bit VESA local bus slots (2)
NPU Options	None



CONNECTIONS			
Purpose	Location	Purpose	Location
External battery	J1	Speaker	J7
Turbo LED	J4	Power LED & keylock	J8
Turbo switch	J5	32-bit VESA local bus slots	SL1 & SL2
Reset switch	J6		

Continued on next page. . .

UNIDENTIFIED

VL486

... continued from previous page

USER CONFIGURABLE SETTINGS		
Function	Jumper	Position
í Monitor type select monochrome	JP1	pins 1 & 2 closed
Monitor type select color	JP1	pins 2 & 3 closed

DRAM CONFIGURATION		
Size	Bank 0	Bank 1
1MB	(4) 256K x 9	NONE
2MB	(4) 256K x 9	(4) 256K x 9
4MB	(4) 1M x 9	NONE
5MB	(4) 256K x 9	(4) 1M x 9
16MB	(4) 4M x 9	NONE
20MB	(4) 1M x 9	(4) 4M x 9
32MB	(4) 4M x 9	(4) 4M x 9

CACHE CONFIGURATION			
Size	Bank 0	Bank 1	TAG
64KB	(4) 8K x 8	(4) 8K x 8	(1) 8K x 8
128KB	(4) 32K x 8	NONE	(1) 8K x 8
256KB	(4) 32K x 8	(4) 32K x 8	(1) 32K x 8

CACHE JUMPER CONFIGURATION				
Size	JP8	JP9	JP10	JP11
64KB	Open	Open	pins 1 & 2 closed	pins 1 & 2 closed
128KB	Closed	Open	pins 2 & 3 closed	pins 2 & 3 closed
256KB	Closed	Closed	pins 2 & 3 closed	pins 1 & 2 closed

CPU TYPE CONFIGURATION		
Type	JP14	JP15
80486SX	pins 2 & 3 closed	Open
ODP486SX	pins 1 & 2, 3 & 4 closed	pins 2 & 3 closed
80487SX	pins 1 & 2, 3 & 4 closed	pins 2 & 3 closed
80486DX	pins 1 & 2, 3 & 4 closed	pins 1 & 2 closed
80486DX2	pins 1 & 2, 3 & 4 closed	pins 1 & 2 closed

CPU SPEED CONFIGURATION				
Speed	JP4	JP5	JP6	JP7
25MHz	Closed	Closed	Open	Open
33MHz	Closed	Open	Open	Open
40MHz	Open	Closed	Open	Open
50iMHz	Closed	Closed	Open	Open
50MHz	Open	Open	Open	Open
66iMHz	Closed	Open	Open	Open

VESA WAIT STATE CONFIGURATION		
Wait states	JP12	JP13
0 wait states	Open	Open

1 wait state	Closed	Closed
--------------	--------	--------