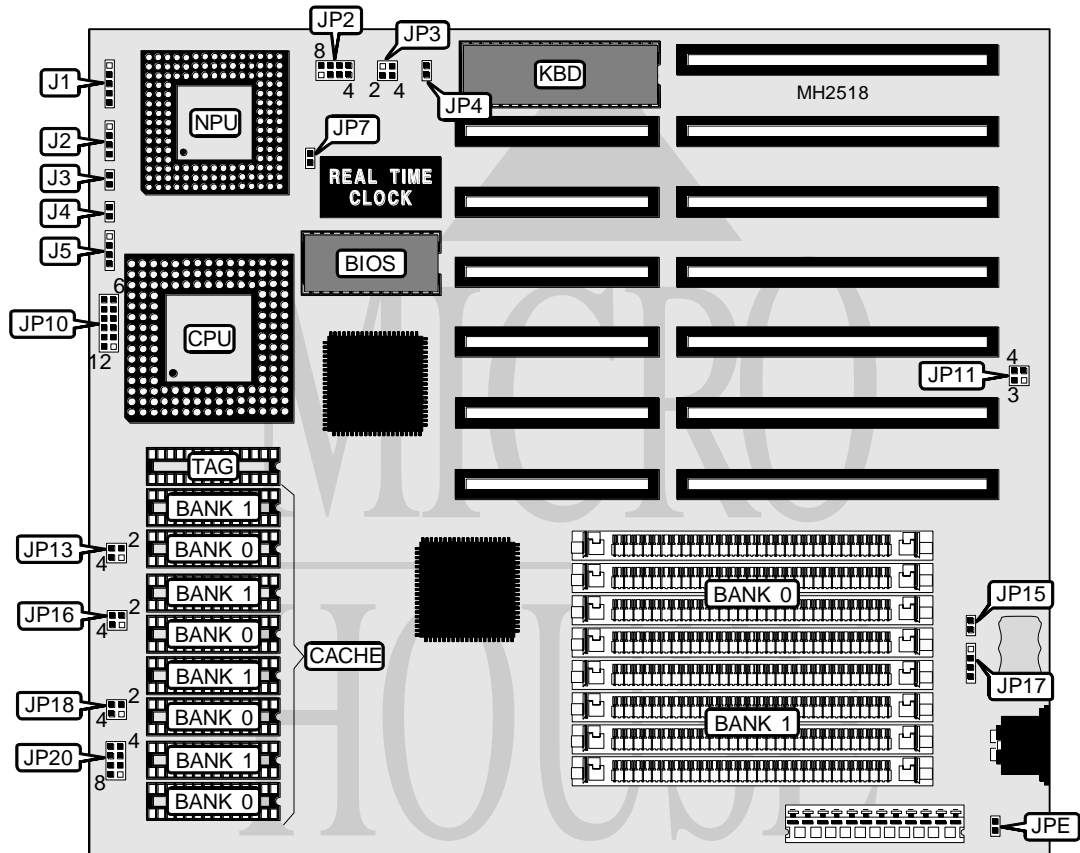


UNIDENTIFIED M B 1 4 3 3 F A

Processor 80486SX/80487SX/80486DX/80486DX2
Processor Speed 25/33/40/50(internal)/50/66(internal)MHz
Chip Set Unidentified
Max. Onboard DRAM 32MB
Cache 32/64/128/256KB
BIOS AMI
Dimensions 254mm x 220mm
I/O Options None
NPU Options 4167



CONNECTIONS			
Purpose	Location	Purpose	Location
Power LED & keylock	J1	Reset switch	J4
Speaker	J2	Turbo switch	J5
Turbo LED	J3	External battery	JP17

Continued on next page. . .

UNIDENTIFIED MB1433FA

... continued from previous page

USER CONFIGURABLE SETTINGS		
Function	Jumper	Position
í Keyboard BIOS pin size select 23	JP3	pins 1 & 3 closed
Keyboard BIOS pin size select 30	JP3	pins 2 & 4 closed
í Monitor type select monochrome	JP4	Open
Monitor type select color	JP4	Closed
í Chip type select 146818	JP7	Open
Chip type select Dallas	JP7	Closed
í CMOS memory normal operation	JP11	pins 2 & 4 closed
CMOS memory clear	JP11	pins 1 & 3 closed
í Fuse enabled	JPE	Open
Fuse disabled	JPE	Closed

DRAM CONFIGURATION		
Size	Bank 0	Bank 1
1MB	(4) 256K x 9	NONE
2MB	(4) 256K x 9	(4) 256K x 9
4MB	(4) 1M x 9	NONE
5MB	(4) 256K x 9	(4) 1M x 9
8MB	(4) 1M x 9	(4) 1M x 9
16MB	(4) 4M x 9	NONE
20MB	(4) 1M x 9	(4) 4M x 9
32MB	(4) 4M x 9	(4) 4M x 9

CACHE CONFIGURATION			
Size	Bank 0	Bank 1	TAG
32KB	(4) 8K x 8	NONE	(1) 8K x 8
64KB	(4) 8K x 8	(4) 8K x 8	(1) 8K x 8
128KB	(4) 32K x 8	NONE	(1) 8K x 8
256KB	(4) 32K x 8	(4) 32K x 8	(1) 32K x 8

CACHE JUMPER CONFIGURATION					
Size	JP2	JP13	JP16	JP18	JP20
32KB	1 & 8, 2 & 7, 3 & 6, 4 & 5	1 & 4	1 & 4	Open	Open
64KB	1 & 8, 2 & 7, 4 & 5	2 & 3	1 & 4	1 & 4	Open
128KB	1 & 8, 2 & 7, 3 & 6	1 & 4	1 & 4	1 & 4, 2 & 3	1 & 8, 2 & 7
256KB	1 & 8, 2 & 7	2 & 3	1 & 4, 2 & 3	1 & 4, 2 & 3	3 & 6, 4 & 5

Note: Pins designated should be in the closed position.

CPU TYPE CONFIGURATION	
Type	JP10
80486SX	pins 3 & 10 closed
80487SX	pins 1 & 12, 2 & 11, 5 & 8 closed
80486DX	pins 1 & 12, 2 & 11, 3 & 10 closed
80486DX2	pins 1 & 12, 2 & 11, 3 & 10 closed