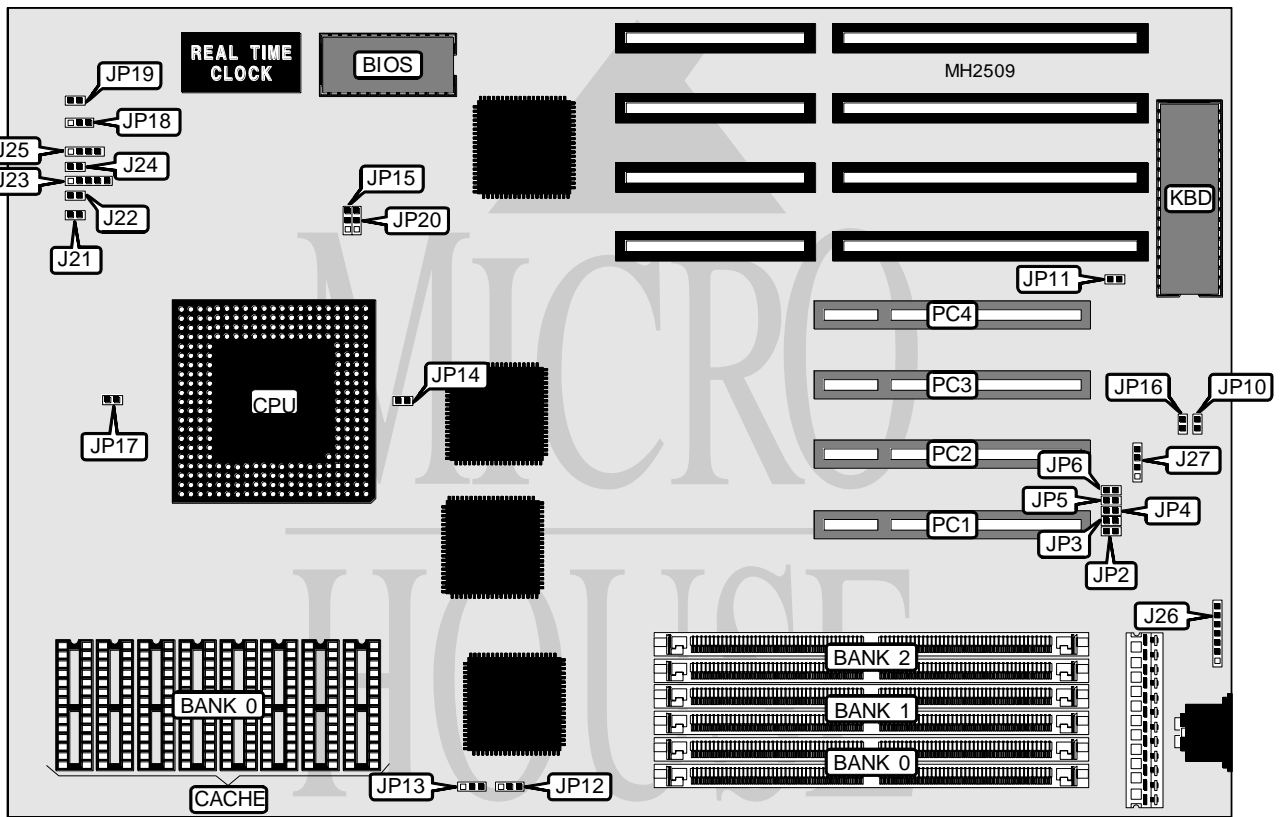


# EFA CORPORATION

## P 5 M P 4

<b>Processor</b>	Pentium
<b>Processor Speed</b>	50/60/66MHz
<b>Chip Set</b>	Intel
<b>Max. Onboard DRAM</b>	192MB
<b>Cache</b>	256/512KB
<b>BIOS</b>	Award
<b>Dimensions</b>	330mm x 218mm
<b>I/O Options</b>	32-bit PCI slots (4), PS/2 mouse port
<b>NPU Options</b>	None



CONNECTIONS			
Purpose	Location	Purpose	Location
Reset switch	J21	Speaker	J25
Turbo switch	J22	Auxiliary keyboard & PS/2 mouse	J26
Power LED & keylock	J23	External battery	J27
Turbo LED	J24	32-bit PCI slots	PC1 - PC4

Continued on next page. . .

# EFA CORPORATION

## P 5 M P 4

... continued from previous page

USER CONFIGURABLE SETTINGS		
Function	Jumper	Position
í Factory configured - do not alter	JP2	pins 1 & 2 closed
í Factory configured - do not alter	JP3	pins 1 & 2 closed
í Factory configured - do not alter	JP4	pins 1 & 2 closed
í Factory configured - do not alter	JP5	pins 1 & 2 closed
í PCI IRQ select IRQ14 normal card installed	JP6	Open
PCI IRQ select IRQ14 PCI IDE card installed	JP6	Closed
í Factory configured - do not alter	JP10	N/A
í Factory configured - do not alter	JP11	pins 1 & 2 closed
í Pipeline mode enabled	JP14	Closed
Pipeline mode disabled	JP14	Open
í Monitor type select color	JP16	Closed
Monitor type select monochrome	JP16	Open
í Cache type select write back	JP17	Open
Cache type select write through	JP17	Closed
í BIOS type select EPROM	JP18	pins 1 & 2 closed
BIOS type select flash ROM	JP18	pins 2 & 3 closed
í CMOS memory normal operation	JP19	Open
CMOS memory clear	JP19	Closed

DRAM CONFIGURATION			
Size	Bank 0	Bank 1	Bank 2
2MB	(2) 256K x 36	NONE	NONE
4MB	(2) 256K x 36	NONE	(2) 256K x 36
4MB	(2) 512K x 36	NONE	NONE
6MB	(2) 256K x 36	NONE	(2) 512K x 36
6MB	(2) 512K x 36	NONE	(2) 256K x 36
6MB	(2) 256K x 36	(2) 256K x 36	(2) 256K x 36
8MB	(2) 512K x 36	NONE	(2) 512K x 36
8MB	(2) 1M x 36	NONE	NONE
8MB	(2) 512K x 36	(2) 256K x 36	(2) 256K x 36
10MB	(2) 256K x 36	NONE	(2) 1M x 36
10MB	(2) 1M x 36	NONE	(2) 256K x 36
10MB	(2) 256K x 36	(2) 512K x 36	(2) 512K x 36
12MB	(2) 512K x 36	NONE	(2) 1M x 36
12MB	(2) 1M x 36	NONE	(2) 512K x 36
12MB	(2) 512K x 36	(2) 512K x 36	(2) 512K x 36
12MB	(2) 1M x 36	(2) 256K x 36	(2) 256K x 36
16MB	(2) 1M x 36	NONE	(2) 1M x 36
16MB	(2) 2M x 36	NONE	NONE
16MB	(2) 1M x 36	(2) 512K x 36	(2) 512K x 36
18MB	(2) 256K x 36	NONE	(2) 2M x 36
18MB	(2) 2M x 36	NONE	(2) 256K x 36
18MB	(2) 256K x 36	(2) 1M x 36	(2) 1M x 36
20MB	(2) 512K x 36	NONE	(2) 2M x 36

Continued on next page. . .

# EFA CORPORATION

## P 5 M P 4

... continued from previous page

DRAM CONFIGURATION (CON'T)			
Size	Bank 0	Bank 1	Bank 2
20MB	(2) 2M x 36	NONE	(2) 512K x 36
20MB	(2) 512K x 36	(2) 1M x 36	(2) 1M x 36
20MB	(2) 2M x 36	(2) 256K x 36	(2) 256K x 36
24MB	(2) 1M x 36	NONE	(2) 2M x 36
24MB	(2) 2M x 36	NONE	(2) 1M x 36
24MB	(2) 1M x 36	(2) 1M x 36	(2) 1M x 36
24MB	(2) 2M x 36	(2) 512K x 36	(2) 512K x 36
32MB	(2) 2M x 36	NONE	(2) 2M x 36
32MB	(2) 4M x 36	NONE	NONE
32MB	(2) 2M x 36	(2) 1M x 36	(2) 1M x 36
34MB	(2) 256K x 36	NONE	(2) 4M x 36
34MB	(2) 4M x 36	NONE	(2) 256K x 36
34MB	(2) 256K x 36	(2) 2M x 36	(2) 2M x 36
36MB	(2) 512K x 36	NONE	(2) 4M x 36
36MB	(2) 4M x 36	NONE	(2) 512K x 36
36MB	(2) 512K x 36	(2) 2M x 36	(2) 2M x 36
36MB	(2) 4M x 36	(2) 256K x 36	(2) 256K x 36
40MB	(2) 1M x 36	NONE	(2) 4M x 36
40MB	(2) 1M x 36	(2) 2M x 36	(2) 2M x 36
40MB	(2) 4M x 36	(2) 512K x 36	(2) 512K x 36
48MB	(2) 2M x 36	NONE	(2) 4M x 36
48MB	(2) 4M x 36	NONE	(2) 2M x 36
48MB	(2) 2M x 36	(2) 2M x 36	(2) 2M x 36
48MB	(2) 4M x 36	(2) 1M x 36	(2) 1M x 36
64MB	(2) 4M x 36	NONE	(2) 4M x 36
64MB	(2) 8M x 36	NONE	NONE
64MB	(2) 4M x 36	(2) 2M x 36	(2) 2M x 36
66MB	(2) 256K x 36	NONE	(2) 8M x 36
66MB	(2) 8M x 36	NONE	(2) 256K x 36
66MB	(2) 256K x 36	(2) 4M x 36	(2) 4M x 36
68MB	(2) 512K x 36	NONE	(2) 8M x 36
68MB	(2) 8M x 36	NONE	(2) 512K x 36
68MB	(2) 512K x 36	(2) 4M x 36	(2) 4M x 36
68MB	(2) 8M x 36	(2) 256K x 36	(2) 256K x 36
72MB	(2) 1M x 36	NONE	(2) 8M x 36
72MB	(2) 8M x 36	NONE	(2) 1M x 36
72MB	(2) 1M x 36	(2) 4M x 36	(2) 4M x 36
72MB	(2) 8M x 36	(2) 512K x 36	(2) 512K x 36
80MB	(2) 2M x 36	NONE	(2) 8M x 36
80MB	(2) 8M x 36	NONE	(2) 2M x 36
80MB	(2) 8M x 36	(2) 1M x 36	(2) 1M x 36
96MB	(2) 4M x 36	NONE	(2) 8M x 36
96MB	(2) 8M x 36	NONE	(2) 4M x 36
96MB	(2) 4M x 36	(2) 4M x 36	(2) 4M x 36

Continued on next page...

**EFA CORPORATION**  
**P 5 M P 4**

... continued from previous page

DRAM CONFIGURATION (CON'T)			
Size	Bank 0	Bank 1	Bank 2
96MB	(2) 8M x 36	(2) 2M x 36	(2) 2M x 36
128MB	(2) 8M x 36	NONE	(2) 8M x 36
128MB	(2) 8M x 36	(2) 4M x 36	(2) 4M x 36
130MB	(2) 256K x 36	(2) 8M x 36	(2) 8M x 36
132MB	(2) 512K x 36	(2) 8M x 36	(2) 8M x 36
136MB	(2) 1M x 36	(2) 8M x 36	(2) 8M x 36
144MB	(2) 2M x 36	(2) 8M x 36	(2) 8M x 36
160MB	(2) 4M x 36	(2) 8M x 36	(2) 8M x 36
192MB	(2) 8M x 36	(2) 8M x 36	(2) 8M x 36

CACHE CONFIGURATION	
Size	Bank 0
256KB	(8) 32K x 8
512KB	(8) 64K x 8

CACHE JUMPER CONFIGURATION		
Size	JP12	JP13
0KB	pins 1 & 2 closed	pins 1 & 2 closed
256KB	pins 2 & 3 closed	pins 1 & 2 closed
512KB	pins 2 & 3 closed	pins 2 & 3 closed

CPU SPEED CONFIGURATION		
Speed	JP15	JP20
50MHz	pins 1 & 2 closed	pins 1 & 2 closed
60MHz	pins 2 & 3 closed	pins 2 & 3 closed
66MHz	pins 1 & 2 closed	pins 2 & 3 closed