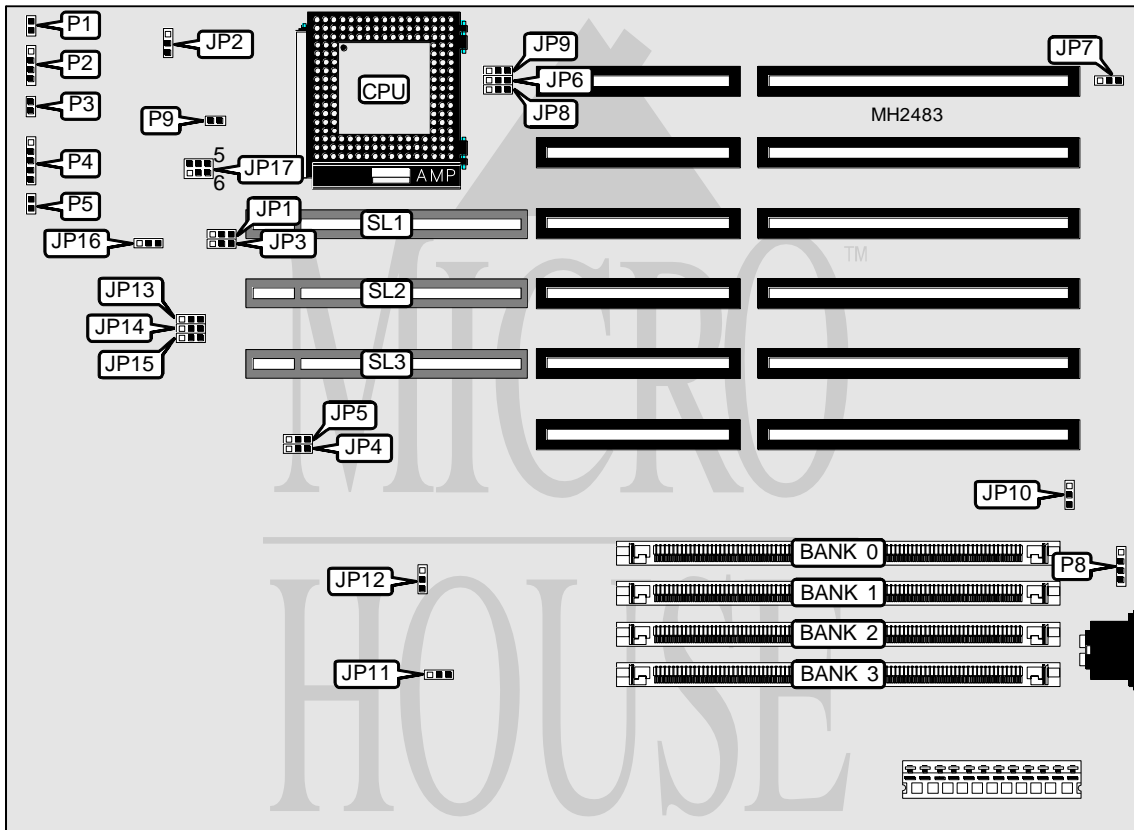


# OCEAN INFORMATION SYSTEMS, INC.

## HIPPO DCA 1 486 REV. 1.0

<b>Processor</b>	80486SX/80487SX/80486DX/80486DX2/80486DX4
<b>Processor Speed</b>	25/33/50(internal)/66(internal)/75(internal)/100(internal)MHz
<b>Chip Set</b>	Unidentified
<b>Max. Onboard DRAM</b>	64MB
<b>Cache</b>	None
<b>BIOS</b>	Unidentified
<b>Dimensions</b>	330mm x 218mm
<b>I/O Options</b>	32-bit VESA local bus slots (3)
<b>NPU Options</b>	None



CONNECTIONS			
Purpose	Location	Purpose	Location
Turbo switch	P1	Turbo LED	P5
Speaker	P2	External battery	P8
Reset switch	P3	Chassis fan power	P9
Power LED & keylock	P4	32-bit VESA local bus slots	SL1 - SL3

Continued on next page...

# OCEAN INFORMATION SYSTEMS, INC.

## HIPPO DCA 1 486 REV. 1.0

... continued from previous page

USER CONFIGURABLE SETTINGS		
Function	Jumper	Position
í Factory configured - do not alter	JP1	pins 1 & 2 closed
í Factory configured - do not alter	JP2	N/A
í Factory configured - do not alter	JP3	Open
í Monitor type select monochrome	JP7	pins 2 & 3 closed
Monitor type select CGA/EGA/VGA	JP7	pins 1 & 2 closed
í CMOS memory normal operation	JP10	pins 1 & 2 closed
CMOS memory clear	JP10	pins 2 & 3 closed
í Factory configured - do not alter	JP11	N/A
í Factory configured - do not alter	JP12	N/A
í Factory configured - do not alter	JP13	pins 2 & 3 closed
í Factory configured - do not alter	JP14	pins 2 & 3 closed
í Factory configured - do not alter	JP15	pins 2 & 3 closed
í Factory configured - do not alter	JP16	pins 1 & 2 closed

DRAM CONFIGURATION				
Size	Bank 0	Bank 1	Bank 2	Bank 3
4MB	(1) 1M x 36	NONE	NONE	NONE
8MB	(1) 1M x 36	(1) 1M x 36	NONE	NONE
8MB	(1) 2M x 36	NONE	NONE	NONE
12MB	(1) 1M x 36	(1) 1M x 36	(1) 1M x 36	NONE
12MB	(1) 1M x 36	(1) 2M x 36	NONE	NONE
16MB	(1) 1M x 36	(1) 1M x 36	(1) 1M x 36	(1) 1M x 36
16MB	(1) 2M x 36	(1) 2M x 36	NONE	NONE
16MB	(1) 4M x 36	NONE	NONE	NONE
20MB	(1) 1M x 36	(1) 1M x 36	(1) 1M x 36	(1) 2M x 36
20MB	(1) 1M x 36	(1) 2M x 36	(1) 2M x 36	NONE
20MB	(1) 1M x 36	(1) 4M x 36	NONE	NONE
24MB	(1) 1M x 36	(1) 1M x 36	(1) 2M x 36	(1) 2M x 36
24MB	(1) 2M x 36	(1) 2M x 36	(1) 2M x 36	NONE
24MB	(1) 2M x 36	(1) 4M x 36	NONE	NONE
28MB	(1) 1M x 36	(1) 2M x 36	(1) 4M x 36	NONE
28MB	(1) 1M x 36	(1) 2M x 36	(1) 2M x 36	(1) 2M x 36
32MB	(1) 2M x 36	(1) 2M x 36	(1) 2M x 36	(1) 2M x 36
32MB	(1) 4M x 36	(1) 4M x 36	NONE	NONE
40MB	(1) 2M x 36	(1) 4M x 36	(1) 4M x 36	NONE
48MB	(1) 2M x 36	(1) 2M x 36	(1) 4M x 36	(1) 4M x 36
56MB	(1) 2M x 36	(1) 4M x 36	(1) 4M x 36	(1) 4M x 36
64MB	(1) 4M x 36	(1) 4M x 36	(1) 4M x 36	(1) 4M x 36

Continued on next page. . .

OCEAN INFORMATION SYSTEMS, INC.  
HIPPO DCA 1 486 REV. 1.0

... continued from previous page

CPU TYPE CONFIGURATION			
Type	JP6	JP8	JP9
80486SX	pins 2 & 3 closed	Open	pins 1 & 2 closed
80487SX	pins 1 & 2 closed	pins 1 & 2 closed	pins 2 & 3 closed
80486DX	pins 1 & 2 closed	pins 2 & 3 closed	pins 2 & 3 closed
80486DX2	pins 1 & 2 closed	pins 2 & 3 closed	pins 2 & 3 closed
80486DX4	pins 1 & 2 closed	pins 2 & 3 closed	pins 2 & 3 closed

CPU SPEED CONFIGURATION		
Speed	JP4	JP5
25MHz	pins 2 & 3 closed	pins 2 & 3 closed
33MHz	pins 1 & 2 closed	pins 1 & 2 closed
50iMHz	pins 2 & 3 closed	pins 2 & 3 closed
66iMHz	pins 1 & 2 closed	pins 1 & 2 closed
75iMHz	pins 2 & 3 closed	pins 2 & 3 closed
100iMHz	pins 1 & 2 closed	pins 1 & 2 closed

CPU SPEED CONFIGURATION (80486DX4 ONLY)	
Speed	JP17
2x	pins 3 & 4 closed
2.5x	pins 5 & 6 closed
3x	pins 1 & 2 closed