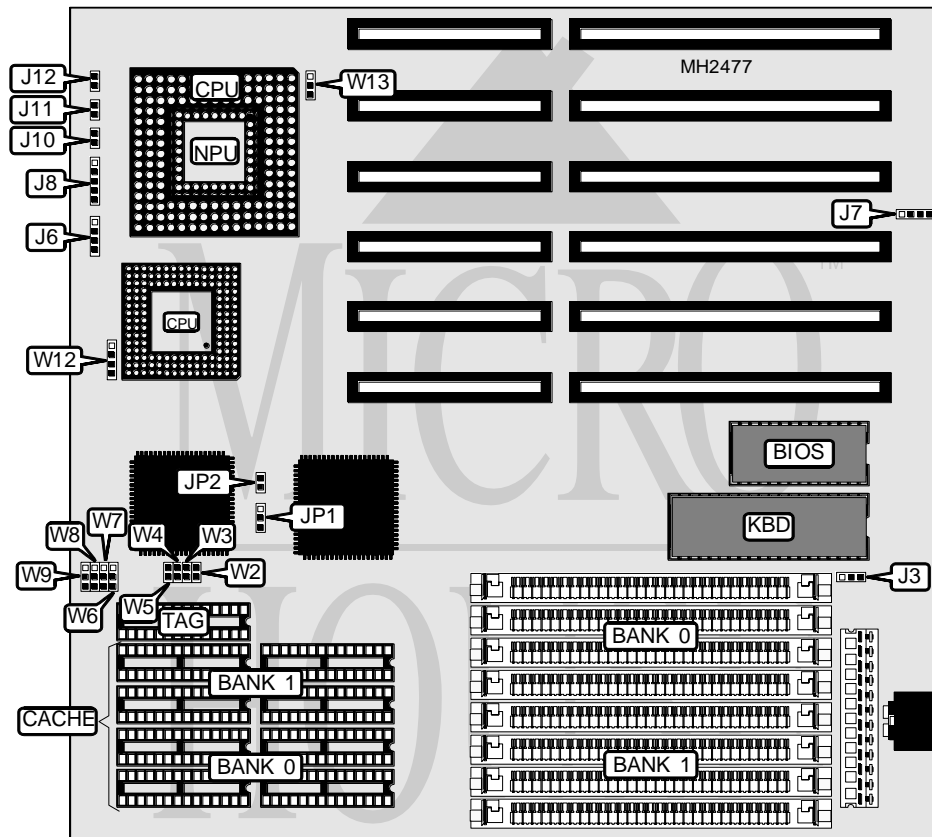


# MODULAR CIRCUIT TECHNOLOGY

## MCT - M 3 4 8 6 - 3 3 / 4 0

<b>Processor</b>	80386SX/80486SX/80487SX/80486DX/80486DX2
<b>Processor Speed</b>	25/33/40/50(internal)/50/66(internal)MHz
<b>Chip Set</b>	UMC
<b>Max. Onboard DRAM</b>	32MB
<b>Cache</b>	64/128/256KB
<b>BIOS</b>	AMI
<b>Dimensions</b>	330mm x 218mm
<b>I/O Options</b>	None
<b>NPU Options</b>	80387SX



CONNECTIONS			
Purpose	Location	Purpose	Location
Speaker	J6	Turbo switch	J10
External battery	J7	Turbo LED	J11
Power LED & keylock	J8	Reset switch	J12

Continued on next page. . .

# MODULAR CIRCUIT TECHNOLOGY

## MCT - M3486 - 33/40

... continued from previous page

USER CONFIGURABLE SETTINGS		
Function	Jumper	Position
í Monitor type select color	J3	pins 2 & 3 closed
Monitor type select monochrome	J3	pins 1 & 2 closed
í NPU disabled	JP2	Open
NPU enabled	JP2	Closed

DRAM CONFIGURATION		
Size	Bank 0	Bank 1
1MB	(4) 256K x 9	NONE
2MB	(4) 256K x 9	(4) 256K x 9
4MB	(4) 1M x 9	NONE
5MB	(4) 256K x 9	(4) 1M x 9
8MB	(4) 1M x 9	(4) 1M x 9
16MB	(4) 4M x 9	NONE
20MB	(4) 1M x 9	(4) 4M x 9
32MB	(4) 4M x 9	(4) 4M x 9

CACHE CONFIGURATION			
Size	Bank 0	Bank 1	TAG
64KB	(4) 8K x 8	(4) 8K x 8	(1) 8K x 8
128KB	(4) 32K x 8	NONE	(1) 8K x 8
256KB	(4) 32K x 8	(4) 32K x 8	(1) 32K x 8

CACHE JUMPER CONFIGURATION								
Size	W2	W3	W4	W5	W6	W7	W8	W9
64KB	Open	Open	Open	Open	1 & 2	Open	1 & 2	1 & 2
128KB	Open	Open	Closed	Closed	2 & 3	1 & 2	2 & 3	1 & 2
256KB	Closed	Closed	Closed	Closed	1 & 2	2 & 3	2 & 3	2 & 3

Note: Pins designated should be in the closed position.

CPU TYPE CONFIGURATION			
Type	JP1	W12	W13
80386SX	pins 1 & 2 closed	Open	Open
80487SX	pins 2 & 3 closed	pins 1 & 2, 3 & 4 closed	pins 2 & 3 closed
80486SX	pins 2 & 3 closed	pins 2 & 3 closed	Open
80486DX	pins 2 & 3 closed	pins 1 & 2, 3 & 4 closed	pins 1 & 2 closed
80486DX2	pins 2 & 3 closed	pins 1 & 2, 3 & 4 closed	pins 1 & 2 closed