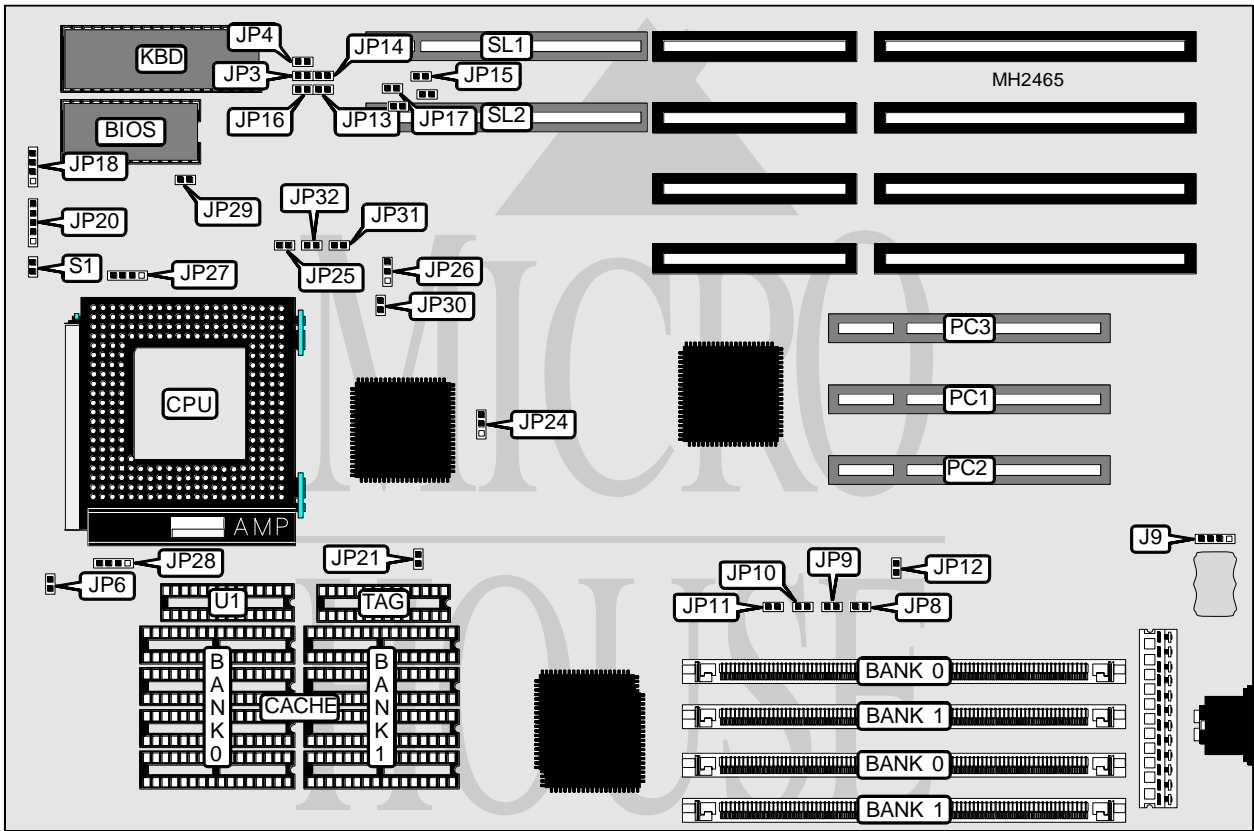


# SEANIX TECHNOLOGY, INC.

## P 5 - P C I - V L

<b>Processor</b>	Pentium
<b>Processor Speed</b>	60/66MHz
<b>Chip Set</b>	OPTI
<b>Max. Onboard DRAM</b>	128MB
<b>Cache</b>	256/512/1024KB
<b>BIOS</b>	Award
<b>Dimensions</b>	330mm x 218mm
<b>I/O Options</b>	32-bit VESA local bus slots (2), 32-bit PCI slots (3)
<b>NPU Options</b>	None



CONNECTIONS			
Purpose	Location	Purpose	Location
External battery	J9	Chassis fan power	JP28
Speaker	JP18	32-bit PCI slots	PC1 - PC3
Power LED & keylock	JP20	Reset switch	S1
Secondary CPU fan	JP27	32-bit VESA local bus slots	SL1 & SL2

Continued on next page. . .

**SEANIX TECHNOLOGY, INC.**  
**P 5 - P C I - V L**

... continued from previous page

USER CONFIGURABLE SETTINGS		
Function	Jumper	Position
í Factory configured - do not alter	JP3	N/A
í Factory configured - do not alter	JP4	N/A
í Factory configured - do not alter	JP8	N/A
í Factory configured - do not alter	JP9	Closed
í Factory configured - do not alter	JP10	N/A
í Factory configured - do not alter	JP11	N/A
í Factory configured - do not alter	JP12	N/A
í Factory configured - do not alter	JP13	N/A
í Factory configured - do not alter	JP14	N/A
í Factory configured - do not alter	JP15	N/A
í Factory configured - do not alter	JP16	N/A
í Factory configured - do not alter	JP17	N/A
í Factory configured - do not alter	JP24	N/A
í Flash BIOS write protect enabled	JP29	Open
Flash BIOS write protect disabled	JP29	Closed

DRAM CONFIGURATION		
Size	Bank 0	Bank 1
2MB	(2) 256K x 36	NONE
4MB	(2) 512K x 36	NONE
4MB	(2) 256K x 36	(2) 256K x 36
6MB	(2) 256K x 36	(2) 512K x 36
8MB	(2) 1M x 36	NONE
8MB	(2) 512K x 36	(2) 512K x 36
10MB	(2) 256K x 36	(2) 1M x 36
12MB	(2) 512K x 36	(2) 1M x 36
16MB	(2) 2M x 36	NONE
16MB	(2) 1M x 36	(2) 1M x 36
18MB	(2) 256K x 36	(2) 2M x 36
20MB	(2) 512K x 36	(2) 2M x 36
24MB	(2) 1M x 36	(2) 2M x 36
32MB	(2) 4M x 36	NONE
32MB	(2) 2M x 36	(2) 2M x 36
34MB	(2) 256K x 36	(2) 4M x 36
36MB	(2) 512K x 36	(2) 4M x 36
40MB	(2) 1M x 36	(2) 4M x 36
48MB	(2) 2M x 36	(2) 4M x 36
64MB	(2) 8M x 36	NONE
64MB	(2) 4M x 36	(2) 4M x 36
66MB	(2) 256K x 36	(2) 8M x 36
68MB	(2) 512K x 36	(2) 8M x 36
72MB	(2) 1M x 36	(2) 8M x 36
80MB	(2) 2M x 36	(2) 8M x 36
96MB	(2) 4M x 36	(2) 8M x 36
128MB	(2) 8M x 36	(2) 8M x 36

Continued on next page. . .

# SEANIX TECHNOLOGY, INC.

## P5 - PCI - VL

... continued from previous page

CACHE CONFIGURATION				
Size	Bank 0	Bank 1	TAG	DIRTY BIT (U1)
256KB	(4) 32K x 8	(4) 32K x 8	(1) 32K x 8	(1) 32K x 8
512KB	(4) 64K x 8	(4) 64K x 8	(1) 32K x 8	(1) 32K x 8
1MB	(4) 128K x 8	(4) 128K x 8	(1) 32K x 8	(1) 32K x 8

CACHE JUMPER CONFIGURATION		
Size	JP6	JP21
256KB	Open	Open
512KB	Open	Closed
1MB	Closed	Closed

CPU FREQUENCY CONFIGURATION (AV9107-4)					
Speed	JP25	JP26	JP30	JP31	JP32
50MHz	Closed	pins 2 & 3 closed	Closed	Open	Closed
60MHz	Open	pins 1 & 2 closed	Closed	Open	Open
66MHz	Closed	pins 2 & 3 closed	Open	Closed	Closed

CPU FREQUENCY CONFIGURATION (CH9007E)					
Speed	JP25	JP26	JP30	JP31	JP32
50MHz	Open	pins 2 & 3 closed	Open	Open	Closed
60MHz	Open	pins 2 & 3 closed	Open	Closed	Open
66MHz	Open	pins 2 & 3 closed	Closed	Closed	Open