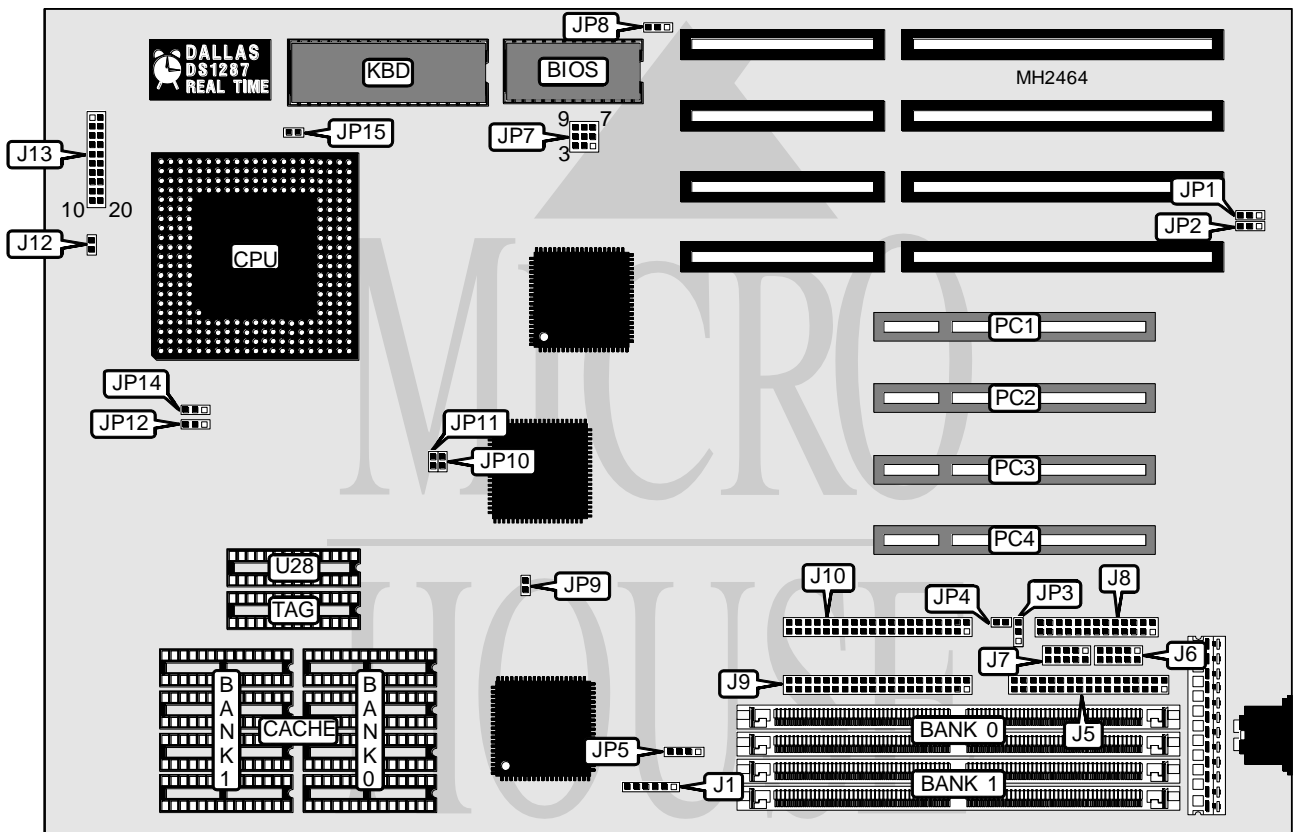


ELITEGROUP COMPUTER SYSTEMS, INC.

SI54P AIO

| | |
|--------------------------|---|
| Processor | Pentium |
| Processor Speed | 75/90/100MHz |
| Chip Set | SIS |
| Max. Onboard DRAM | 128MB |
| Cache | 256/512/1024KB |
| BIOS | Award |
| Dimensions | 330mm x 218mm |
| I/O Options | 32-bit PCI slots (4), floppy drive interface, green PC connector, IDE interfaces (2), parallel port, serial ports (2) |
| NPU Options | None |



| CONNECTIONS | | | |
|------------------------|----------|---------------------|------------------|
| Purpose | Location | Purpose | Location |
| 3.3v connector | J1 | Turbo LED | J13 pins 2 - 3 |
| Floppy drive interface | J5 | Green PC connector | J13 pins 4 - 5 |
| Serial port 1 | J6 | Turbo switch | J13 pins 6 - 7 |
| Serial port 2 | J7 | Reset switch | J13 pins 9 - 10 |
| Parallel port | J8 | Power LED & keylock | J13 pins 11 - 15 |
| IDE interface 1 | J9 | Speaker | J13 pins 17 - 20 |
| IDE interface 2 | J10 | 32-bit PCI slots | PC1 - PC4 |
| IDE interface LED | J12 | | |

Continued on next page. . .

ELITEGROUP COMPUTER SYSTEMS, INC.

SI54P AIO

... continued from previous page

| USER CONFIGURABLE SETTINGS | | |
|-------------------------------------|--------|-------------------|
| Function | Jumper | Position |
| í On board I/O enabled | JP3 | pins 1 & 2 closed |
| On board I/O disabled | JP3 | pins 2 & 3 closed |
| í PCI IDE interface enabled | JP4 | Open |
| PCI IDE interface disabled | JP4 | Closed |
| í DRAM parity check enabled | JP9 | Closed |
| DRAM parity check disabled | JP9 | Open |
| í Factory configured - do not alter | JP15 | N/A |

| DRAM CONFIGURATION | | |
|--------------------|---------------|---------------|
| Size | Bank 0 | Bank 1 |
| 2MB | (2) 256K x 36 | NONE |
| 4MB | (2) 256K x 36 | (2) 256K x 36 |
| 4MB | (2) 512K x 36 | NONE |
| 8MB | (2) 512K x 36 | (2) 512K x 36 |
| 8MB | (2) 1M x 36 | NONE |
| 16MB | (2) 1M x 36 | (2) 1M x 36 |
| 16MB | (2) 2M x 36 | NONE |
| 32MB | (2) 2M x 36 | (2) 2M x 36 |
| 36MB | (2) 512K x 36 | (2) 4M x 36 |
| 36MB | (2) 4M x 36 | (2) 512K x 36 |
| 48MB | (2) 2M x 36 | (2) 4M x 36 |
| 64MB | (2) 4M x 36 | (2) 4M x 36 |
| 64MB | (2) 8M x 36 | NONE |
| 128MB | (2) 8M x 36 | (2) 8M x 36 |

| DRAM JUMPER CONFIGURATION | |
|---------------------------|--------------------------|
| Size | JP5 |
| Single sided only | pins 2 & 3 closed |
| Single and double sided | pins 1 & 2, 3 & 4 closed |

| CACHE CONFIGURATION | | | | |
|---------------------|--------------|--------------|-------------|-------------|
| Size | Bank 0 | Bank 1 | TAG | Dirty (U28) |
| 256KB | (4) 32K x 8 | (4) 32K x 8 | (1) 32K x 8 | (1) 32K x 8 |
| 512KB | (4) 64K x 8 | (4) 64K x 8 | (1) 32K x 8 | (1) 32K x 8 |
| 1MB | (4) 128K x 8 | (4) 128K x 8 | (1) 32K x 8 | (1) 32K x 8 |

| CACHE JUMPER CONFIGURATION | | |
|----------------------------|--------|--------|
| Size | JP10 | JP11 |
| 256KB | Open | Open |
| 512KB | Open | Closed |
| 1MB | Closed | Closed |

Continued on next page. ...

ELITEGROUP COMPUTER SYSTEMS, INC.

SI54P AIO

... continued from previous page

| CPU SPEED CONFIGURATION | |
|-------------------------|---------------------------------|
| Speed | JP7 |
| 75MHz | pins 2 & 3, 5 & 6, 7 & 8 closed |
| 90MHz | pins 2 & 3, 4 & 5, 8 & 9 closed |
| 100MHz | pins 1 & 2, 5 & 6, 7 & 8 closed |

| CPU SIGNAL CONFIGURATION | | |
|--------------------------|-------------------|-------------------|
| Type | JP12 | JP14 |
| Write back cache | pins 1 & 2 closed | N/A |
| Write through cache | pins 2 & 3 closed | N/A |
| Always invalidated | N/A | pins 1 & 2 closed |
| Write to invalidated | N/A | pins 2 & 3 closed |

| ECP MODE CONFIGURATION | | |
|------------------------|-------------------|-------------------|
| Setting | JP1 | JP2 |
| DRQ1 - DACK1 | pins 1 & 2 closed | pins 2 & 3 closed |
| DRQ3 - DACK3 | pins 2 & 3 closed | pins 1 & 2 closed |

| BIOS CONFIGURATION | |
|--------------------|-------------------|
| Setting | JP8 |
| Flash ROM +5v | pins 1 & 2 closed |
| Flash ROM +12v | pins 2 & 3 closed |
| EPROM | Open |