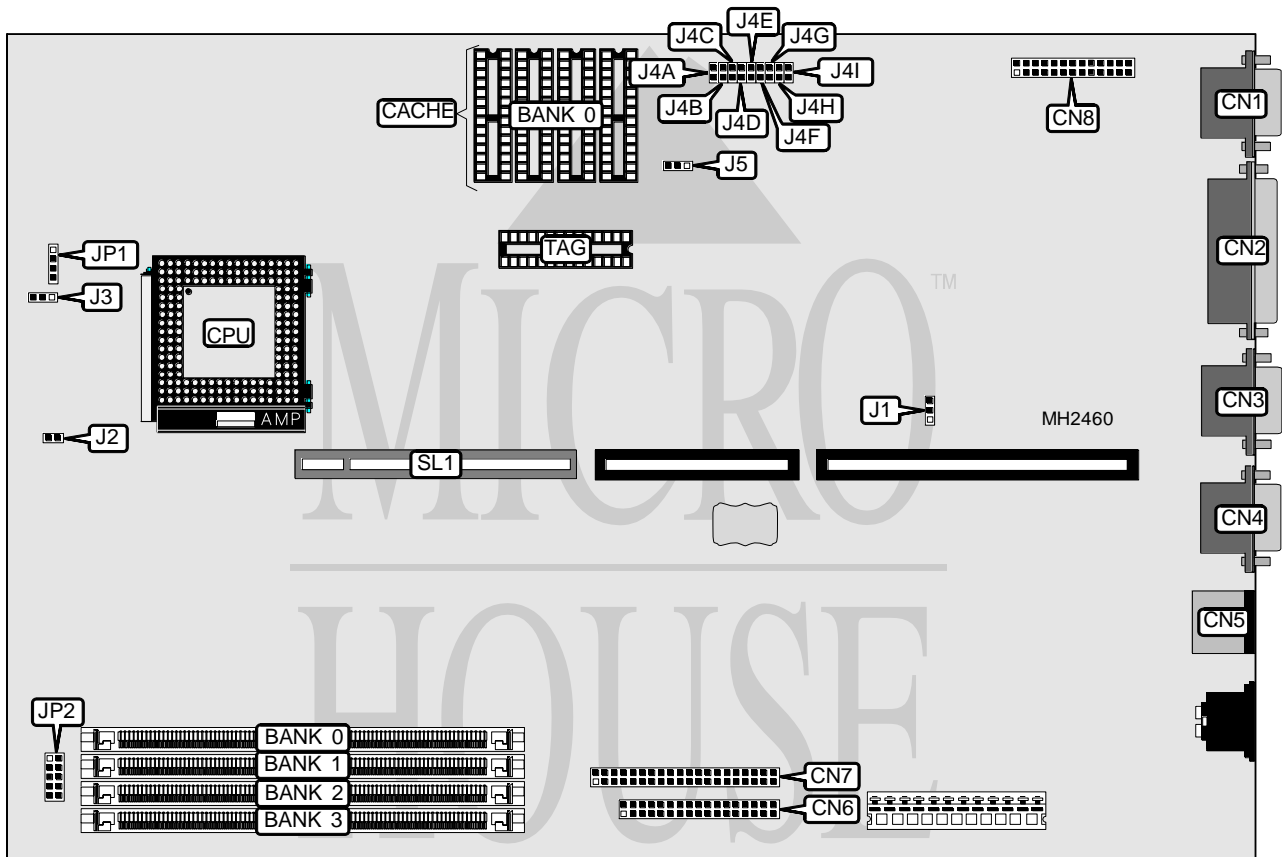


SIEMENS NIXDORF INFORMATIONSSYSTEME AG

S 2 6 3 6 1 - D 8 0 2 - A

Processor	80486SX/80486DX/ODP486SX/80486DX2/Pentium Overdrive
Processor Speed	25/33/50(internal)/66(internal)MHz
Chip Set	Unidentified
Max. Onboard DRAM	64MB
Cache	128KB
BIOS	Unidentified
Dimensions	330mm x 218mm
I/O Options	32-bit VESA local bus slots (1), floppy drive interface, IDE interface, parallel port, PS/2 mouse port, serial ports (2), VGA feature connector, VGA port
NPU Options	None



CONNECTIONS			
Purpose	Location	Purpose	Location
VGA port	CN1	IDE interface	CN7
Parallel port	CN2	VGA feature connector	CN8
Serial port 2	CN3	Speaker	JP1
Serial port 1	CN4	LED connector	JP2
PS/2 mouse port	CN5	32-bit VESA local bus slots	SL1
Floppy drive interface	CN6		

Continued on next page. . .

SIEMENS NIXDORF INFORMATIONSSYSTEME AG

S 2 6 3 6 1 - D 8 0 2 - A

... continued from previous page

USER CONFIGURABLE SETTINGS		
Function	Jumper	Position
í IRQ9 select VGA controller only	J1	pins 1 & 2 closed
IRQ9 select other uses	J1	pins 2 & 3 closed
í VGA interface enabled	J4A	Closed
VGA interface disabled	J4A	Open
í IDE interface enabled	J4B	Closed
IDE interface disabled	J4B	Open
í Floppy drive interface enabled	J4C	Closed
Floppy drive interface disabled	J4C	Open
í Factory configured - do not alter	J4D	Closed
í Factory configured - do not alter	J4E	Open
í Monitor type select color	J4F	Closed
Monitor type select monochrome	J4F	Open
í Factory configured - do not alter	J4H	Closed
í Password enabled	J4I	Open
Password disabled	J4I	Closed
í VGA feature connector interface enabled	J5	pins 1 & 2 closed
VGA feature connector interface disabled	J5	pins 2 & 3 closed

DRAM CONFIGURATION				
Size	Bank 0	Bank 1	Bank 2	Bank 3
4MB	(1) 1M x 36	NONE	NONE	NONE
8MB	(1) 1M x 36	(1) 1M x 36	NONE	NONE
16MB	(1) 1M x 36	(1) 1M x 36	(1) 1M x 36	(1) 1M x 36
8MB	(1) 2M x 36	NONE	NONE	NONE
16MB	(1) 2M x 36	(1) 2M x 36	NONE	NONE
16MB	(1) 4M x 36	NONE	NONE	NONE
24MB	(1) 2M x 36	(1) 2M x 36	(1) 2M x 36	NONE
32MB	(1) 2M x 36	(1) 2M x 36	(1) 2M x 36	(1) 2M x 36
32MB	(1) 4M x 36	(1) 4M x 36	NONE	NONE
48MB	(1) 4M x 36	(1) 4M x 36	(1) 4M x 36	NONE
64MB	(1) 4M x 36	(1) 4M x 36	(1) 4M x 36	(1) 4M x 36

CACHE CONFIGURATION		
Size	Bank 0	TAG
128KB	(4) 32K x 8	(1) 8K x 8

CACHE JUMPER CONFIGURATION	
Type	J2
Write through	Open
Write back	Closed

Continued on next page. . .

SIEMENS NIXDORF INFORMATIONSSYSTEME AG
S 2 6 3 6 1 - D 8 0 2 - A*... continued from previous page*

CPU TYPE CONFIGURATION	
Type	J3
80486SX	pins 1 & 2 closed
80486DX	pins 2 & 3 closed
80486DX2	pins 2 & 3 closed
Pentium Overdrive	pins 2 & 3 closed

CPU SPEED CONFIGURATION	
Speed	J4G
25MHz	Open
33MHz	Closed
50iMHz	Open
66iMHz	Closed