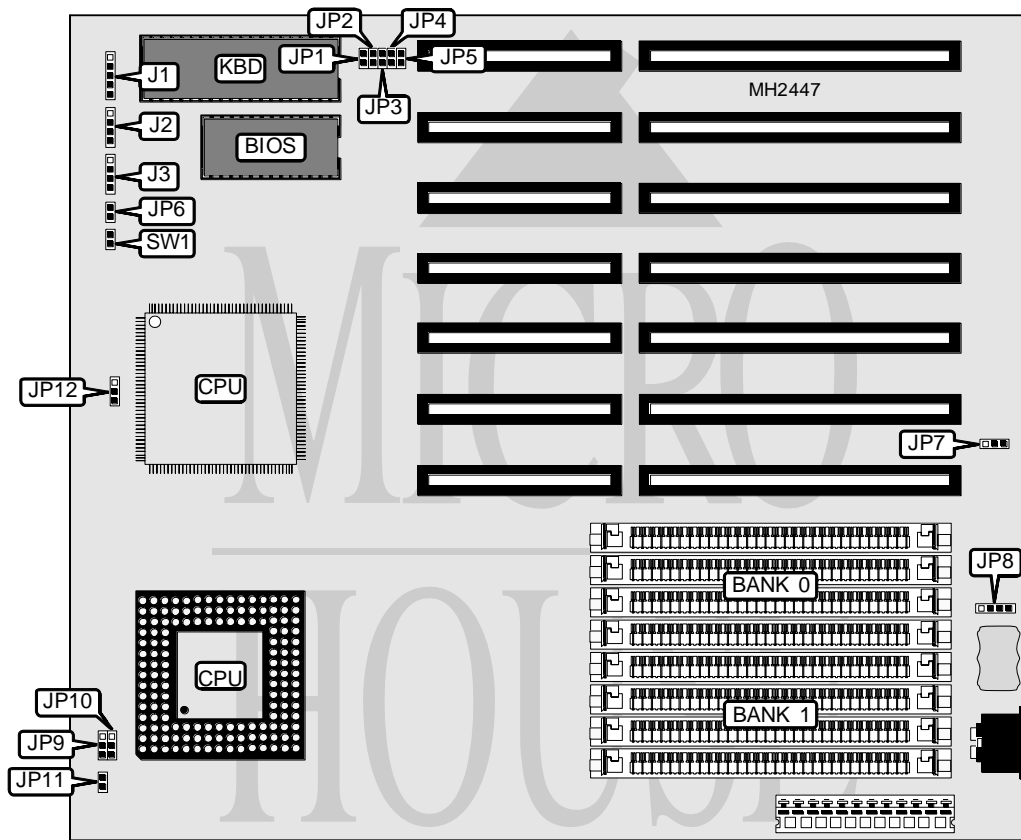


BIOSTAR MICROTECH INTERNATIONAL CORPORATION

MB-1420/1425/1433PB REV. A

MB-1420/1425/1433PV REV. A

Processor	80486SX/80487SX/P23T/80486DX/80486DX2
Processor Speed	20/25/33/50(internal)/50/66(internal)MHz
Chip Set	Unidentified
Max. Onboard DRAM	32MB
Cache	None
BIOS	AMI
Dimensions	254mm x 218mm
I/O Options	None
NPU Options	4167



CONNECTIONS			
Purpose	Location	Purpose	Location
Power LED & keylock	J1	Turbo switch	JP6
Speaker	J2	External battery	JP8
Turbo LED	J3	Reset switch	SW1

Continued on next page. . .

BIOSTAR MICROTECH INTERNATIONAL CORPORATION
MB-1420/1425/1433PB REV. A
MB-1420/1425/1433PV REV. A

... continued from previous page

USER CONFIGURABLE SETTINGS		
Function	Jumper	Position
í Monitor type select color	JP5	Closed
Monitor type select monochrome	JP5	Open
í CMOS memory normal operation	JP7	pins 2 & 3 closed
CMOS memory clear	JP7	pins 1 & 2 closed

DRAM CONFIGURATION		
Size	Bank 0	Bank 1
1MB	(4) 256K x 9	NONE
2MB	(4) 256K x 9	(4) 256K x 9
4MB	(4) 1M x 9	NONE
5MB	(4) 1M x 9	(4) 256K x 9
8MB	(4) 1M x 9	(4) 1M x 9
16MB	(4) 4M x 9	NONE
32MB	(4) 4M x 9	(4) 4M x 9

CPU TYPE CONFIGURATION				
Type	JP9	JP10	JP11	JP12
80486SX (PQFP)	Open	Open	Closed	Open
80486SX (PGA)	Open	Open	2 & 3	Open
80487SX	2 & 3	1 & 2	Closed	Open
80486SX (PQFP) & 80487SX	2 & 3	1 & 2	Closed	1 & 2
80486SX (PQFP) & P23T	2 & 3	1 & 2	Closed	2 & 3
80486SX (PQFP) & 80486DX/DX2	1 & 2	1 & 2	Closed	2 & 3
80486DX	1 & 2	1 & 2	Closed	Open
80486DX2	1 & 2	1 & 2	Closed	Open

Note: Pins designated should be in the closed position.

KEYBOARD BIOS CONFIGURATION				
Type	JP1	JP2	JP3	JP4
8042 (23 pins)	Closed	Open	Open	Open
8042 (24 pins)	Open	Closed	Open	Open
8042 (27 pins)	Open	Open	Closed	Open
8042 (30 pins)	Open	Open	Open	Closed