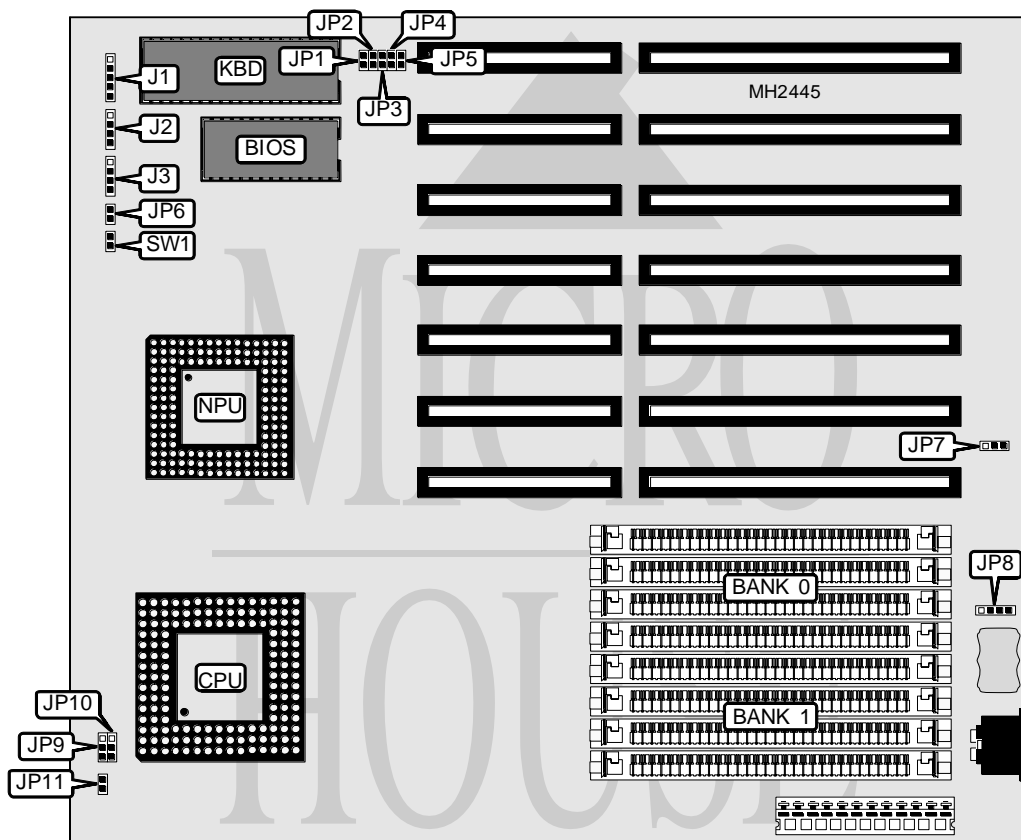


BIOSTAR MICROTECH INTERNATIONAL CORPORATION

MB-1420/1425/1433PB

MB-1420/1425/1433PV

Processor	80486SX/80487SX/80486DX/80486DX2
Processor Speed	20/25/33/50(internal)/50/66(internal)MHz
Chip Set	Unidentified
Max. Onboard DRAM	32MB
Cache	None
BIOS	AMI
Dimensions	254mm x 218mm
I/O Options	None
NPU Options	4167



CONNECTIONS			
Purpose	Location	Purpose	Location
Power LED & keylock	J1	Turbo switch	JP6
Speaker	J2	External battery	JP8
Turbo LED	J3	Reset switch	SW1

Continued on next page. . .

BIOSTAR MICROTECH INTERNATIONAL CORPORATION
MB-1420/1425/1433PB
MB-1420/1425/1433PV

... continued from previous page

USER CONFIGURABLE SETTINGS		
Function	Jumper	Position
í Monitor type select color	JP5	Closed
Monitor type select monochrome	JP5	Open
í CMOS memory normal operation	JP7	pins 2 & 3 closed
CMOS memory clear	JP7	pins 1 & 2 closed

DRAM CONFIGURATION		
Size	Bank 0	Bank 1
1MB	(4) 256K x 9	NONE
2MB	(4) 256K x 9	(4) 256K x 9
4MB	(4) 1M x 9	NONE
5MB	(4) 1M x 9	(4) 256K x 9
8MB	(4) 1M x 9	(4) 1M x 9
16MB	(4) 4M x 9	NONE
32MB	(4) 4M x 9	(4) 4M x 9

CPU TYPE CONFIGURATION			
Type	JP9	JP10	JP11
80486SX	Open	pins 2 & 3 closed	Open
80487SX	pins 2 & 3 closed	pins 1 & 2 closed	Closed
80486DX	pins 1 & 2 closed	pins 1 & 2 closed	Closed
80486DX2	pins 1 & 2 closed	pins 1 & 2 closed	Closed

KEYBOARD BIOS CONFIGURATION				
Type	JP1	JP2	JP3	JP4
8042 (23 pins)	Closed	Open	Open	Open
8042 (24 pins)	Open	Closed	Open	Open
8042 (27 pins)	Open	Open	Closed	Open
8042 (30 pins)	Open	Open	Open	Closed