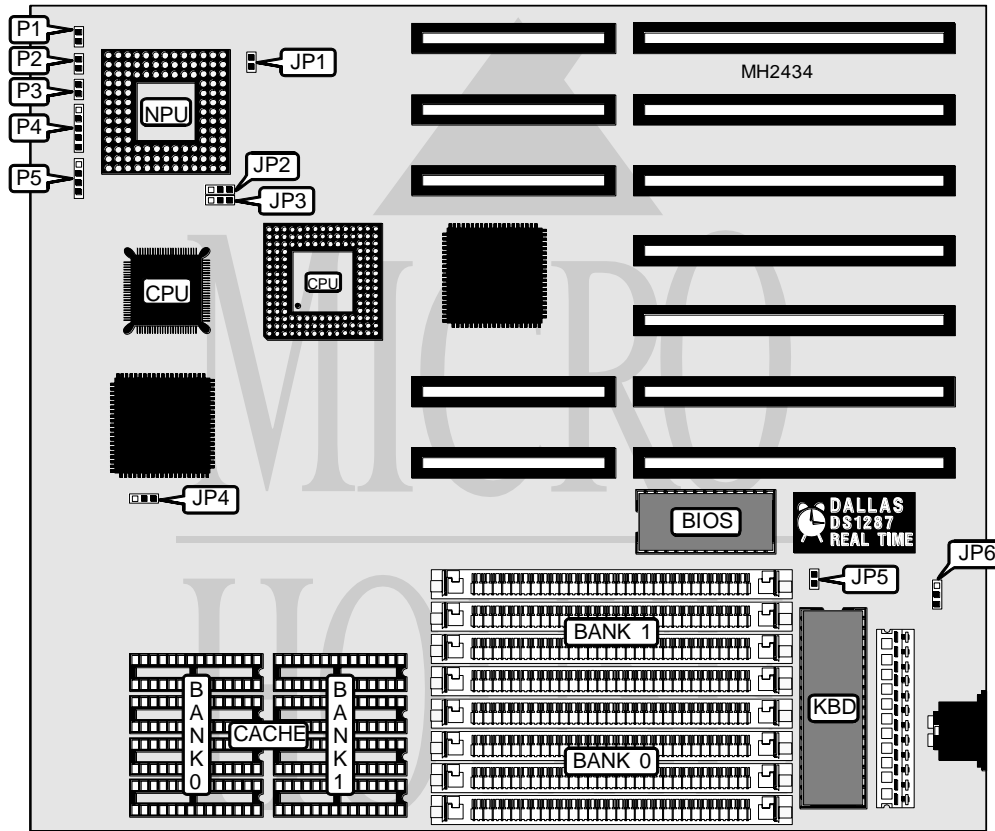


# SEANIX TECHNOLOGY, INC.

## HTK320

<b>Processor</b>	80386DX
<b>Processor Speed</b>	25/33/40MHz
<b>Chip Set</b>	LSI
<b>Max. Onboard DRAM</b>	128MB
<b>Cache</b>	32/64/128KB
<b>BIOS</b>	AMI
<b>Dimensions</b>	240mm x 215mm
<b>I/O Options</b>	None
<b>NPU Options</b>	80387DX/3167



CONNECTIONS			
Purpose	Location	Purpose	Location
Reset switch	P1	Power LED & keylock	P4
Cache LED	P2	Speaker	P5
Turbo switch	P3		

Continued on next page. . .

**SEANIX TECHNOLOGY, INC.**  
**HTK320**

... continued from previous page

USER CONFIGURABLE SETTINGS		
Function	Jumper	Position
í NPU synchronous with CPU	JP1	Open
NPU asynchronous with CPU	JP1	Closed
í CPU type select PGA	JP2	pins 2 & 3 closed
CPU type select PQFP	JP2	pins 1 & 2 closed
í PGA HLDA (bus hold acknowledge) enabled	JP3	pins 2 & 3 closed
PQFP HLDA (bus hold acknowledge) enabled	JP3	pins 1 & 2 closed
í Monitor type select color	JP5	Closed
Monitor type select monochrome	JP5	Open
í Turbo switch cache flush control enabled	JP6	pins 1 & 2 closed
Keyboard cache flush control enabled	JP6	pins 2 & 3 closed
í Factory configured - do not alter	JP10	Open

Note: JP10 may not be present on all boards. The location is unidentified.

DRAM CONFIGURATION		
Size	Bank 0	Bank 1
1MB	(4) 256K x 9	NONE
2MB	(4) 256K x 9	(4) 256K x 9
4MB	(4) 1M x 9	NONE
5MB	(4) 1M x 9	(4) 256K x 9
8MB	(4) 1M x 9	(4) 1M x 9
16MB	(4) 4M x 9	NONE
17MB	(4) 4M x 9	(4) 256K x 9
20MB	(4) 4M x 9	(4) 1M x 9
32MB	(4) 4M x 9	(4) 4M x 9
64MB	(4) 16M x 9	NONE
128MB	(4) 16M x 9	(4) 16M x 9

CACHE CONFIGURATION		
Size	Bank 0	Bank 1
32KB	(4) 8K x 8	NONE
64KB	(4) 8K x 8	(4) 8K x 8
128KB	(4) 32K x 8	NONE

CACHE JUMPER CONFIGURATION	
Size	JP4
32KB	pins 2 & 3 closed
64KB	pins 2 & 3 closed
128KB	pins 1 & 2 closed