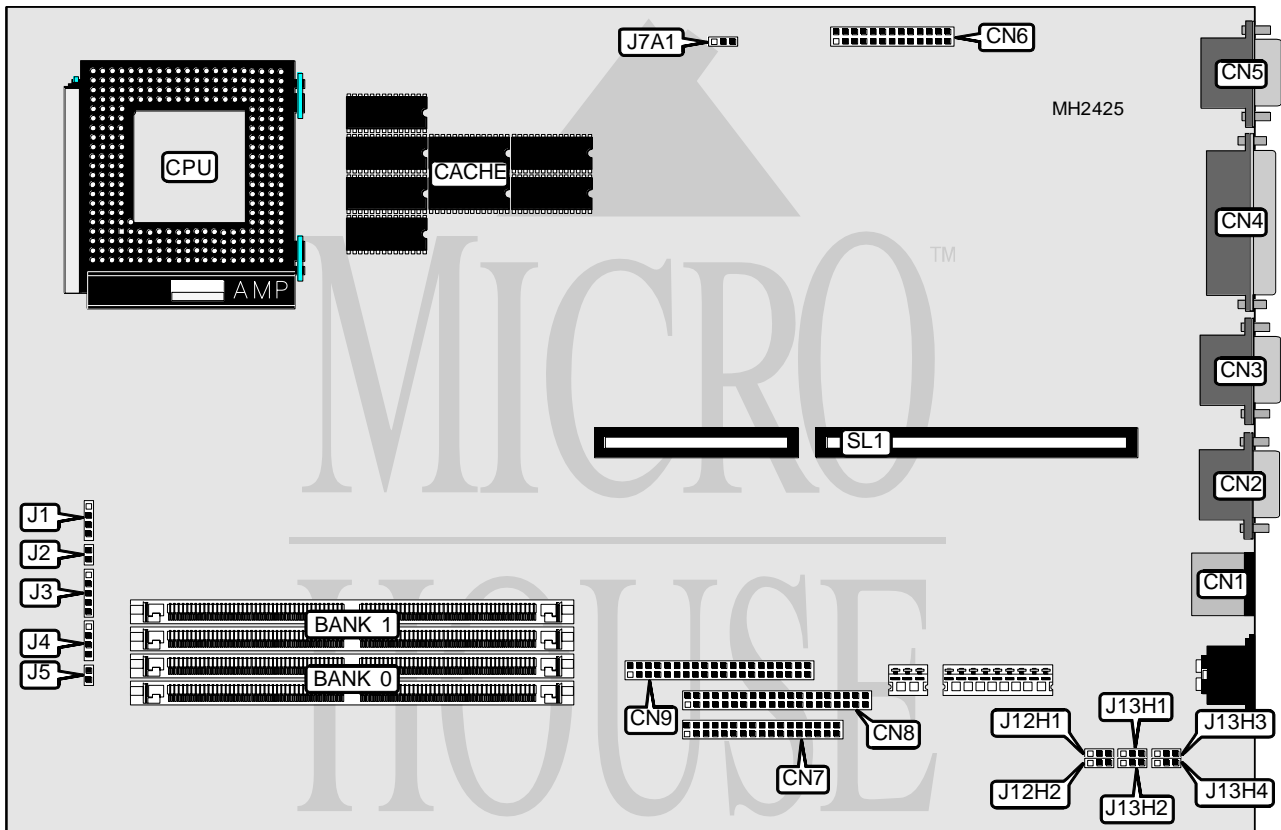


INTEL CORPORATION PREMIERE/PCI LPX

Processor	Pentium
Processor Speed	60MHz
Chip Set	Intel
Max. Onboard DRAM	128MB
Cache	256KB
BIOS	AMI
Dimensions	330mm x 218mm
I/O Options	32-bit PCI slots on riser card (2), floppy drive interface, IDE interfaces (2), parallel port, PS/2 mouse port, serial ports (2), VESA feature connector, VGA port
NPU Options	None



CONNECTIONS			
Purpose	Location	Purpose	Location
PS/2 mouse port	CN1	Floppy drive interface	CN9
Serial port 1	CN2	Speaker	J1
Serial port 2	CN3	Reset switch	J2
Parallel port	CN4	Power LED & keylock	J3
VGA port	CN5	IDE interface LED	J4
VESA feature connector	CN6	Turbo LED	J5
IDE interface	CN7	Riser Card	SL1
IDE interface	CN8		

Continued on next page. . .

INTEL CORPORATION PREMIERE/PCI LPX

... continued from previous page

USER CONFIGURABLE SETTINGS		
Function	Jumper	Position
í Factory configured - do not alter	J7A1	Closed
í Flash BIOS mode select normal	J12H1	pins 2 & 3 closed
Flash BIOS mode select recovery	J12H1	pins 1 & 2 closed
í Flash BIOS update enabled	J12H2	pins 1 & 2 closed
Flash BIOS update disabled	J12H2	pins 2 & 3 closed
í CMOS memory normal operation	J13H1	pins 1 & 2 closed
CMOS memory clear	J13H1	pins 2 & 3 closed
í Password enabled	J13H2	pins 1 & 2 closed
Password disabled	J13H2	pins 2 & 3 closed
í Monitor type select color	J13H3	pins 2 & 3 closed
Monitor type select monochrome	J13H3	pins 1 & 2 closed
í Setup entry enabled	J13H4	pins 1 & 2 closed
Setup entry disabled	J13H4	pins 2 & 3 closed

DRAM CONFIGURATION		
Size	Bank 0	Bank 1
2MB	(2) 256K x 36	NONE
4MB	(2) 256K x 36	(2) 256K x 36
4MB	(2) 512K x 36	NONE
6MB	(2) 256K x 36	(2) 512K x 36
6MB	(2) 512K x 36	(2) 256K x 36
8MB	(2) 512K x 36	(2) 512K x 36
8MB	(2) 1M x 36	NONE
10MB	(2) 256K x 36	(2) 1M x 36
10MB	(2) 1M x 36	(2) 256K x 36
12MB	(2) 512K x 36	(2) 1M x 36
12MB	(2) 1M x 36	(2) 512K x 36
16MB	(2) 1M x 36	(2) 1M x 36
16MB	(2) 2M x 36	NONE
18MB	(2) 256K x 36	(2) 2M x 36
18MB	(2) 2M x 36	(2) 256K x 36
20MB	(2) 512K x 36	(2) 2M x 36
20MB	(2) 2M x 36	(2) 512K x 36
24MB	(2) 1M x 36	(2) 2M x 36
24MB	(2) 2M x 36	(2) 1M x 36
32MB	(2) 2M x 36	(2) 2M x 36
32MB	(2) 4M x 36	NONE
34MB	(2) 256K x 36	(2) 4M x 36
34MB	(2) 4M x 36	(2) 256K x 36
36MB	(2) 512K x 36	(2) 4M x 36
36MB	(2) 4M x 36	(2) 512K x 36
40MB	(2) 1M x 36	(2) 4M x 36
40MB	(2) 4M x 36	(2) 1M x 36
48MB	(2) 2M x 36	(2) 4M x 36

Continued on next page...

INTEL CORPORATION PREMIERE/PCI LPX

... continued from previous page

DRAM CONFIGURATION (CON'T)		
Size	Bank 0	Bank 1
48MB	(2) 4M x 36	(2) 2M x 36
64MB	(2) 4M x 36	(2) 4M x 36
64MB	(2) 8M x 36	NONE
66MB	(2) 256K x 36	(2) 8M x 36
66MB	(2) 8M x 36	(2) 256K x 36
68MB	(2) 512K x 36	(2) 8M x 36
68MB	(2) 8M x 36	(2) 512K x 36
72MB	(2) 1M x 36	(2) 8M x 36
72MB	(2) 8M x 36	(2) 1M x 36
80MB	(2) 2M x 36	(2) 8M x 36
80MB	(2) 8M x 36	(2) 2M x 36
96MB	(2) 4M x 36	(2) 8M x 36
96MB	(2) 8M x 36	(2) 4M x 36
128MB	(2) 8M x 36	(2) 8M x 36

CACHE CONFIGURATION

Note: Cache is factory installed and is not configurable.