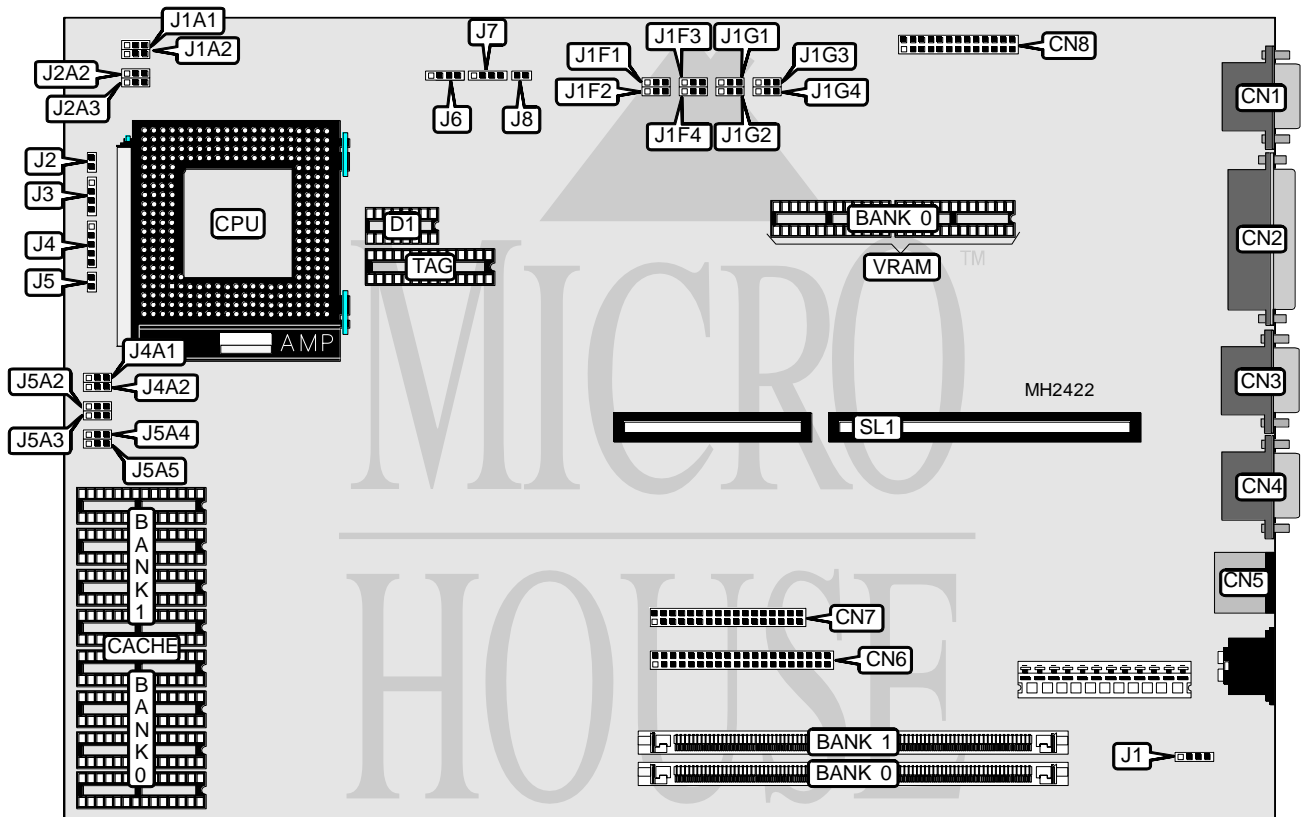


# INTEL CORPORATION CLASSIC/PCI LPX

<b>Processor</b>	80486SX/80486SX2/80486DX2/80486DX4/Pentium Overdrive
<b>Processor Speed</b>	25/50(internal)/66(internal)/100(internal)MHz
<b>Chip Set</b>	Intel
<b>Max. Onboard DRAM</b>	64MB
<b>Cache</b>	128/256KB
<b>BIOS</b>	AMI
<b>Dimensions</b>	330mm x 218mm
<b>I/O Options</b>	32-bit PCI slots on riser card (2), floppy drive interface, IDE interface, parallel port, PS/2 mouse port, serial ports (2), VESA feature connector, VGA port
<b>NPU Options</b>	None



CONNECTIONS			
Purpose	Location	Purpose	Location
VGA port	CN1	Turbo LED	J2
Parallel port	CN2	IDE interface LED	J3
Serial port 2	CN3	Power LED & keylock	J4
Serial port 1	CN4	Reset switch	J5
PS/2 mouse port	CN5	Chassis fan power	J6
IDE interface	CN6	Speaker	J7
Floppy drive interface	CN7	Turbo switch	J8
VESA feature connector	CN8	Riser Card	SL1
Auliliary power connector	J1		

Continued on next page. . .

# INTEL CORPORATION CLASSIC/PCI LPX

... continued from previous page

USER CONFIGURABLE SETTINGS		
Function	Jumper	Position
í Password enabled	J1F3	pins 1 & 2 closed
Password disabled	J1F3	pins 2 & 3 closed
í Monitor type select color	J1F4	pins 1 & 2 closed
Monitor type select monochrome	J1F4	pins 2 & 3 closed
í CMOS memory normal operation	J1G1	pins 1 & 2 closed
CMOS memory clear	J1G1	pins 2 & 3 closed
í Setup entry enabled	J1G2	pins 1 & 2 closed
Setup entry disabled	J1G2	pins 2 & 3 closed
í Flash BIOS write protect enabled	J1G3	pins 1 & 2 closed
Flash BIOS write protect disabled	J1G3	pins 2 & 3 closed
í Normal boot enabled	J1G4	pins 1 & 2 closed
Recovery boot enabled	J1G4	pins 2 & 3 closed
í Factory configured - do not alter	J4A1	Open
í Pentium Overdrive cache disabled	J4A2	pins 1 & 2 closed
Pentium Overdrive cache enabled	J4A2	pins 2 & 3 closed
í CPU type select SL-enhanced	J5A2	pins 1 & 2 closed
CPU type select non SL-enhanced	J5A2	pins 2 & 3 closed
í CPU type select non SX processor	J5A3	pins 1 & 2 closed
CPU type select SX processor	J5A3	pins 2 & 3 closed

DRAM CONFIGURATION		
Size	Bank 0	Bank 1
1MB	NONE	(1) 256K x 36
1MB	(1) 256K x 36	NONE
2MB	NONE	(1) 512K x 36
2MB	(1) 256K x 36	(1) 256K x 36
2MB	(1) 512K x 36	NONE
3MB	(1) 256K x 36	(1) 512K x 36
3MB	(1) 512K x 36	(1) 256K x 36
4MB	NONE	(1) 1M x 36
4MB	(1) 512K x 36	(1) 512K x 36
4MB	(1) 1M x 36	NONE
5MB	(1) 256K x 36	(1) 1M x 36
5MB	(1) 1M x 36	(1) 256K x 36
6MB	(1) 512K x 36	(1) 1M x 36
6MB	(1) 1M x 36	(1) 512K x 36
8MB	NONE	(1) 2M x 36
8MB	(1) 1M x 36	(1) 1M x 36
8MB	(1) 2M x 36	NONE
9MB	(1) 256K x 36	(1) 2M x 36
9MB	(1) 2M x 36	(1) 256K x 36
10MB	(1) 512K x 36	(1) 2M x 36
10MB	(1) 2M x 36	(1) 512K x 36
12MB	(1) 1M x 36	(1) 2M x 36

Continued on next page. . .

# INTEL CORPORATION

## CLASSIC/PCI LPX

... continued from previous page

DRAM CONFIGURATION (CON'T)		
Size	Bank 0	Bank 1
12MB	(1) 2M x 36	(1) 1M x 36
16MB	NONE	(1) 4M x 36
16MB	(1) 2M x 36	(1) 2M x 36
16MB	(1) 4M x 36	NONE
17MB	(1) 256K x 36	(1) 4M x 36
17MB	(1) 4M x 36	(1) 256K x 36
18MB	(1) 512K x 36	(1) 4M x 36
18MB	(1) 4M x 36	(1) 512K x 36
20MB	(1) 1M x 36	(1) 4M x 36
20MB	(1) 4M x 36	(1) 1M x 36
24MB	(1) 2M x 36	(1) 4M x 36
24MB	(1) 4M x 36	(1) 2M x 36
32MB	NONE	(1) 8M x 36
32MB	(1) 4M x 36	(1) 4M x 36
32MB	(1) 8M x 36	NONE
33MB	(1) 256K x 36	(1) 8M x 36
33MB	(1) 8M x 36	(1) 256K x 36
34MB	(1) 512K x 36	(1) 8M x 36
34MB	(1) 8M x 36	(1) 512K x 36
36MB	(1) 1M x 36	(1) 8M x 36
36MB	(1) 8M x 36	(1) 1M x 36
40MB	(1) 2M x 36	(1) 8M x 36
40MB	(1) 8M x 36	(1) 2M x 36
48MB	(1) 4M x 36	(1) 8M x 36
48MB	(1) 8M x 36	(1) 4M x 36
64MB	(1) 8M x 36	(1) 8M x 36

CACHE CONFIGURATION				
Size	Bank 0	Bank 1	D1	TAG
128KB	(4) 32K x 8	NONE	(1) 16K x 1	(1) 32K x 8
256KB	(4) 32K x 8	(4) 32K x 8	(1) 16K x 1	(1) 32K x 8

CACHE JUMPER CONFIGURATION		
Size	J5A4	J5A5
128KB	pins 2 & 3 closed	pins 2 & 3 closed
256KB	pins 1 & 2 closed	pins 1 & 2 closed

CPU VOLTAGE CONFIGURATION				
Type	J1A1	J1A2	J2A2	J2A3
5.0v	pins 2 & 3 closed	pins 2 & 3 closed	pins 2 & 3 closed	pins 2 & 3 closed
3.3v	pins 1 & 2 closed	pins 1 & 2 closed	pins 1 & 2 closed	pins 1 & 2 closed

Continued on next page. . .

# INTEL CORPORATION CLASSIC/PCI LPX

... continued from previous page

CPU SPEED CONFIGURATION		
Speed	J1F1	J1F2
25MHz	pins 2 & 3 closed	pins 2 & 3 closed
33MHz	pins 1 & 2 closed	pins 1 & 2 closed
50iMHz	pins 2 & 3 closed	pins 2 & 3 closed
66iMHz	pins 1 & 2 closed	pins 1 & 2 closed
100iMHz	pins 2 & 3 closed	pins 2 & 3 closed

VIDEO MEMORY UPGRADE CONFIGURATION	
Size	Bank 0
2MB	(2) 256K x 16
Note: This board has 1MB factory installed. The location is unidentified.	