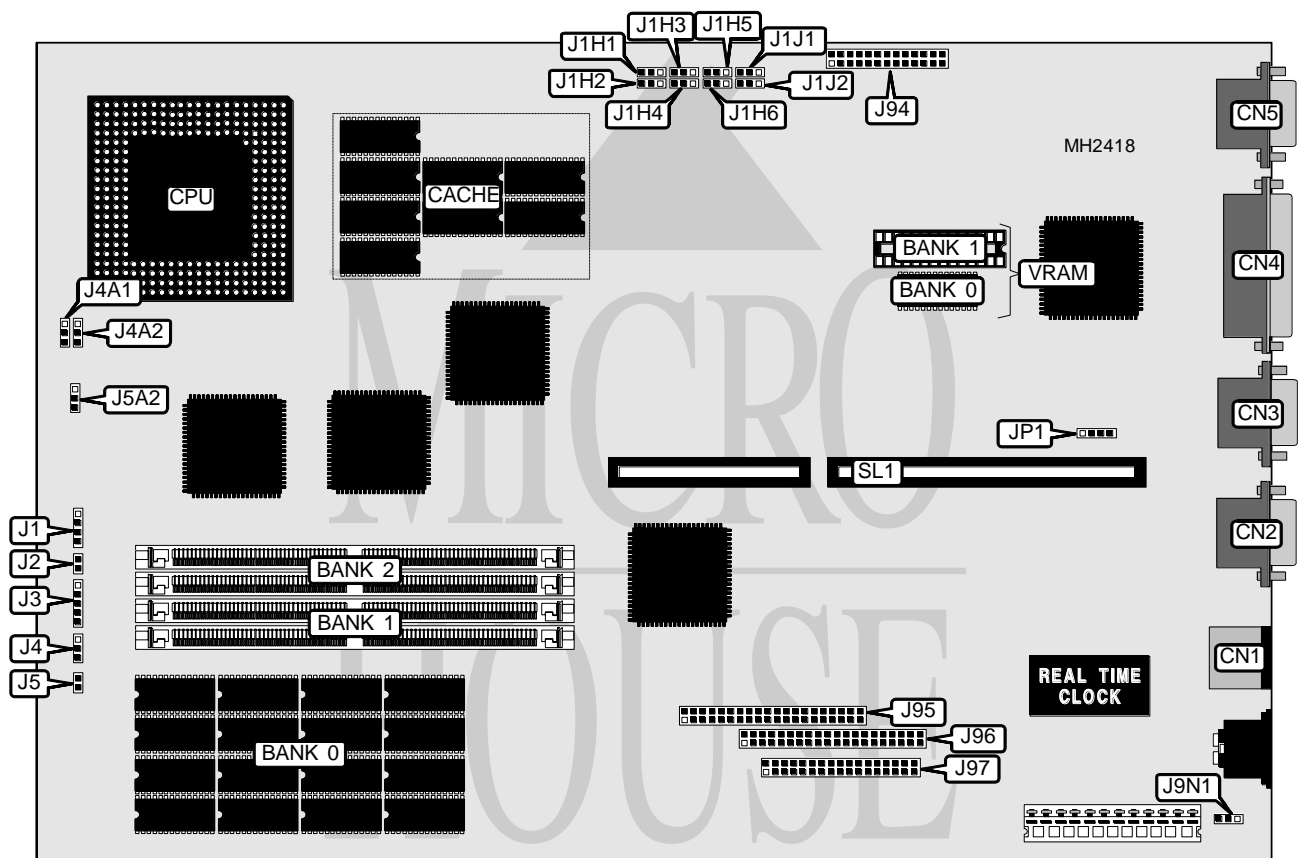


INTEL CORPORATION PREMIERE/PCI LX

Processor	Pentium
Processor Speed	90MHz
Chip Set	SMC
Max. Onboard DRAM	136MB
Cache	256KB
BIOS	AMI
Dimensions	330mm x 218mm
I/O Options	32-bit PCI slots on riser card (2), floppy drive interface, IDE interfaces (2), parallel port, PS/2 mouse port, serial ports (2), VESA feature connector, VGA port
NPU Options	None



Continued on next page...

INTEL CORPORATION

PREMIERE/PCI LX

... continued from previous page

CONNECTIONS			
Purpose	Location	Purpose	Location
PS/2 mouse port	CN1	Chassis fan power (fast fan)	J4A1
Serial port 1	CN2	Chassis fan power (slow fan)	J4A2
Serial port 2	CN3	Turbo switch	J5A2
Parallel port	CN4	VESA feature connector	J94
VGA port	CN5	IDE interface (PCI)	J95
Speaker	J1	IDE interface (ISA)	J96
Reset switch	J2	Floppy drive interface	J97
Power LED & keylock	J3	Auxiliary power connector	JP1
IDE interface LED	J4	Riser Card	SL1
Turbo LED	J5		

USER CONFIGURABLE SETTINGS		
Function	Jumper	Position
í BIOS recovery disabled	J1H1	pins 1 & 2 closed
BIOS recovery enabled	J1H1	pins 2 & 3 closed
í BIOS upgrade in flash enabled	J1H2	pins 2 & 3 closed
BIOS upgrade in flash disabled	J1H2	pins 1 & 2 closed
í Setup enter at boot up enabled	J1H3	pins 2 & 3 closed
Setup enter at boot up disabled	J1H3	pins 1 & 2 closed
í Password disabled	J1H4	pins 1 & 2 closed
Password enabled	J1H4	pins 2 & 3 closed
í Monitor type select color	J1H5	pins 1 & 2 closed
Monitor type select monochrome	J1H5	pins 2 & 3 closed
í CMOS memory normal operation	J1H6	pins 2 & 3 closed
CMOS memory clear	J1H6	pins 1 & 2 closed
í Factory configured - do not alter	J1J1	pins 1 & 2 closed
í Factory configured - do not alter	J1J2	pins 1 & 2 closed
í Factory configured - do not alter	J9N1	pins 1 & 2 closed

DRAM CONFIGURATION			
Size	Bank 0	Bank 1	Bank 2
10MB	(8) 481000	(2) 256K x 36	NONE
12MB	(8) 481000	(2) 256K x 36	(2) 256K x 36
12MB	(8) 481000	(2) 512K x 36	NONE
14MB	(8) 481000	(2) 256K x 36	(2) 512K x 36
14MB	(8) 481000	(2) 512K x 36	(2) 256K x 36
16MB	(8) 481000	(2) 512K x 36	(2) 512K x 36
16MB	(8) 481000	(2) 1M x 36	NONE
18MB	(8) 481000	(2) 256K x 36	(2) 1M x 36
18MB	(8) 481000	(2) 1M x 36	(2) 256K x 36
20MB	(8) 481000	(2) 512K x 36	(2) 1M x 36
20MB	(8) 481000	(2) 1M x 36	(2) 512K x 36
24MB	(8) 481000	(2) 1M x 36	(2) 1M x 36

Continued on next page. . .

INTEL CORPORATION

PREMIERE/PCI LX

... continued from previous page

DRAM CONFIGURATION (CON'T)			
Size	Bank 0	Bank 1	Bank 2
24MB	(8) 481000	(2) 2M x 36	NONE
26MB	(8) 481000	(2) 256K x 36	(2) 2M x 36
26MB	(8) 481000	(2) 2M x 36	(2) 256K x 36
28MB	(8) 481000	(2) 512K x 36	(2) 2M x 36
28MB	(8) 481000	(2) 2M x 36	(2) 512K x 36
32MB	(8) 481000	(2) 1M x 36	(2) 2M x 36
32MB	(8) 481000	(2) 2M x 36	(2) 1M x 36
40MB	(8) 481000	(2) 2M x 36	(2) 2M x 36
40MB	(8) 481000	(2) 4M x 36	NONE
42MB	(8) 481000	(2) 256K x 36	(2) 4M x 36
42MB	(8) 481000	(2) 4M x 36	(2) 256K x 36
44MB	(8) 481000	(2) 512K x 36	(2) 4M x 36
44MB	(8) 481000	(2) 4M x 36	(2) 512K x 36
48MB	(8) 481000	(2) 1M x 36	(2) 4M x 36
48MB	(8) 481000	(2) 4M x 36	(2) 1M x 36
56MB	(8) 481000	(2) 2M x 36	(2) 4M x 36
56MB	(8) 481000	(2) 4M x 36	(2) 2M x 36
72MB	(8) 481000	(2) 4M x 36	(2) 4M x 36
72MB	(8) 481000	(2) 8M x 36	NONE
74MB	(8) 481000	(2) 256K x 36	(2) 8M x 36
74MB	(8) 481000	(2) 8M x 36	(2) 256K x 36
76MB	(8) 481000	(2) 512K x 36	(2) 8M x 36
76MB	(8) 481000	(2) 8M x 36	(2) 512K x 36
80MB	(8) 481000	(2) 1M x 36	(2) 8M x 36
80MB	(8) 481000	(2) 8M x 36	(2) 1M x 36
88MB	(8) 481000	(2) 2M x 36	(2) 8M x 36
88MB	(8) 481000	(2) 8M x 36	(2) 2M x 36
104MB	(8) 481000	(2) 4M x 36	(2) 8M x 36
104MB	(8) 481000	(2) 8M x 36	(2) 4M x 36
136MB	(8) 481000	(2) 8M x 36	(2) 8M x 36

Note: Bank 0 is factory installed and is not configurable.

CACHE CONFIGURATION	
Size	Bank 0
256KB	(8) 32K x 8

Note: Cache is factory installed and is not configurable.

VIDEO MEMORY CONFIGURATION		
Size	Bank 0	Bank 1
1MB	(1) 1024K x 8	NONE
2MB	(1) 1024K x 8	(1) 1024K x 8