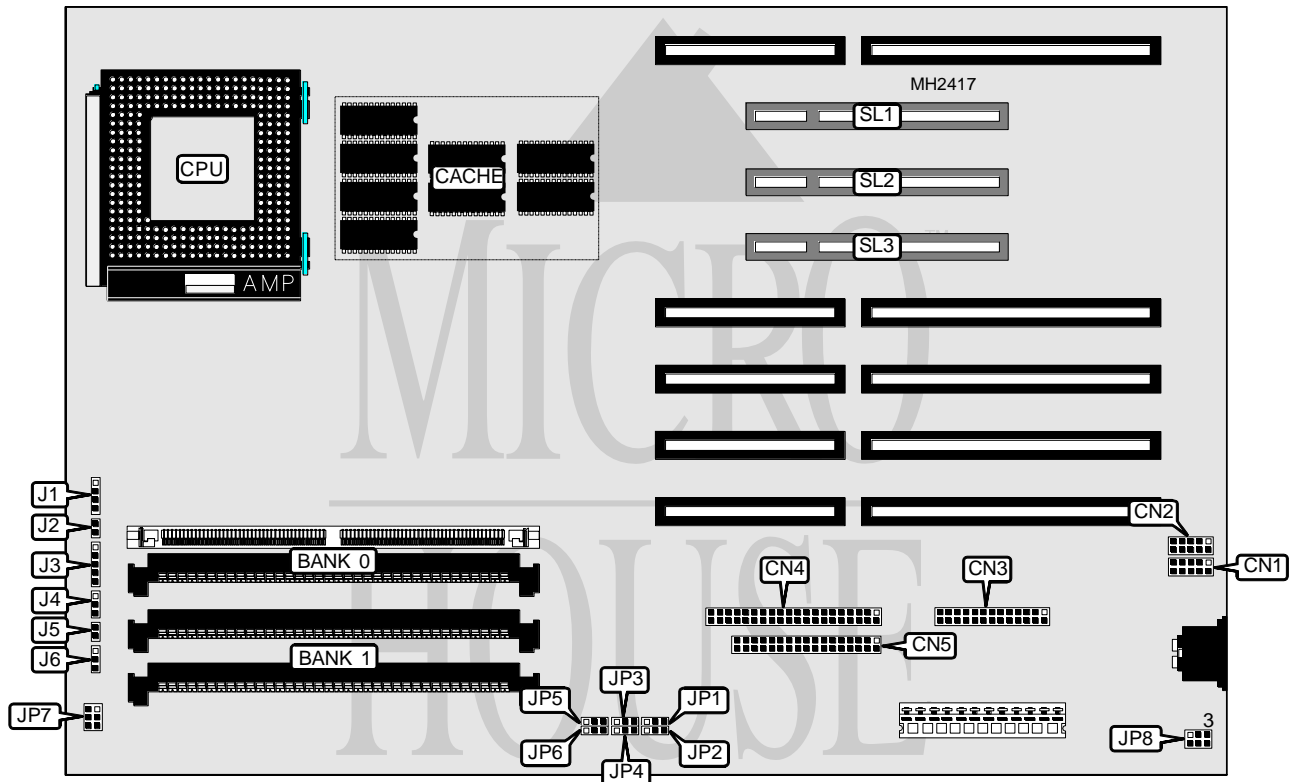


# INTEL CORPORATION PREMIERE/PCI BABY-AT (VER. 2)

<b>Processor</b>	Pentium
<b>Processor Speed</b>	60/66MHz
<b>Chip Set</b>	Intel
<b>Max. Onboard DRAM</b>	128MB
<b>Cache</b>	256KB
<b>BIOS</b>	AMI
<b>Dimensions</b>	330mm x 218mm
<b>I/O Options</b>	32-bit PCI bus slots (3), floppy drive interface, IDE interface, parallel port, serial ports (2)
<b>NPU Options</b>	None



CONNECTIONS			
Purpose	Location	Purpose	Location
Speaker	J1	Serial port 1	CN1
Reset switch	J2	Serial port 2	CN2
Power LED & keylock	J3	Parallel port	CN3
IDE interface LED	J4	IDE interface	CN4
Turbo LED	J5	Floppy drive interface	CN5
Turbo switch	J6	32-bit PCI bus slots	SL1 - SL3

Continued on next page . . .

# INTEL CORPORATION PREMIERE/PCI BABY-AT (VER. 2)

... continued from previous page.

USER CONFIGURABLE SETTINGS		
Function	Jumper	Position
í Monitor type select color	JP1	pins 2 & 3 closed
Monitor type select monochrome	JP1	pins 1 & 2 closed
í Password enabled	JP2	pins 1 & 2 closed
Password disabled	JP2	pins 2 & 3 closed
í BIOS setup entry enabled	JP3	pins 1 & 2 closed
BIOS setup entry disabled	JP3	pins 2 & 3 closed
í Flash BIOS update enabled	JP4	pins 1 & 2 closed
Flash BIOS update disabled	JP4	pins 2 & 3 closed
í CMOS memory normal operation	JP5	pins 1 & 2 closed
CMOS memory clear	JP5	pins 2 & 3 closed
í Flash normal mode at boot	JP6	pins 2 & 3 closed
Flash recovery mode at boot	JP6	pins 1 & 2 closed
í Factory configured - do not alter	JP7	N/A

DRAM CONFIGURATION		
Size	Bank 0	Bank 1
2MB	(2) 256K x 36	NONE
4MB	(2) 256K x 36	(2) 256K x 36
4MB	(2) 512K x 36	NONE
6MB	(2) 256K x 36	(2) 512K x 36
6MB	(2) 512K x 36	(2) 256K x 36
8MB	(2) 512K x 36	(2) 512K x 36
8MB	(2) 1M x 36	NONE
10MB	(2) 1M x 36	(2) 256K x 36
10MB	(2) 256K x 36	(2) 1M x 36
12MB	(2) 1M x 36	(2) 512K x 36
12MB	(2) 512K x 36	(2) 1M x 36
16MB	(2) 1M x 36	(2) 1M x 36
16MB	(2) 2M x 36	NONE
18MB	(2) 2M x 36	(2) 256K x 36
18MB	(2) 256K x 36	(2) 2M x 36
20MB	(2) 2M x 36	(2) 512K x 36
20MB	(2) 512K x 36	(2) 2M x 36
24MB	(2) 2M x 36	(2) 1M x 36
24MB	(2) 1M x 36	(2) 2M x 36
32MB	(2) 2M x 36	(2) 2M x 36
32MB	(2) 4M x 36	NONE
34MB	(2) 4M x 36	(2) 256K x 36
34MB	(2) 256K x 36	(2) 4M x 36
36MB	(2) 4M x 36	(2) 512K x 36
36MB	(2) 512K x 36	(2) 4M x 36
40MB	(2) 4M x 36	(2) 1M x 36
40MB	(2) 1M x 36	(2) 4M x 36
48MB	(2) 4M x 36	(2) 2M x 36

Continued on next page . . .

# INTEL CORPORATION

## PREMIERE/PCI BABY-AT (VER. 2)

... continued from previous page.

DRAM CONFIGURATION		
Size	Bank 0	Bank 1
48MB	(2) 2M x 36	(2) 4M x 36
64MB	(2) 4M x 36	(2) 4M x 36
64MB	(2) 8M x 36	NONE
66MB	(2) 8M x 36	(2) 256K x 36
66MB	(2) 256K x 36	(2) 8M x 36
68MB	(2) 8M x 36	(2) 512K x 36
68MB	(2) 512K x 36	(2) 8M x 36
72MB	(2) 8M x 36	(2) 1M x 36
72MB	(2) 1M x 36	(2) 8M x 36
80MB	(2) 8M x 36	(2) 2M x 36
80MB	(2) 2M x 36	(2) 8M x 36
96MB	(2) 8M x 36	(2) 4M x 36
96MB	(2) 4M x 36	(2) 8M x 36
128MB	(2) 8M x 36	(2) 8M x 36

CACHE CONFIGURATION	
Size	Bank 0
256KB	(8) 32K x 8
Note: Cache is factory installed and is not configurable.	

CPU VOLTAGE CONFIGURATION	
Voltage	JP8
5.0v (60MHz CPU)	pins 1 & 2 closed
5.27v (66MHz CPU)	pins 2 & 3 closed