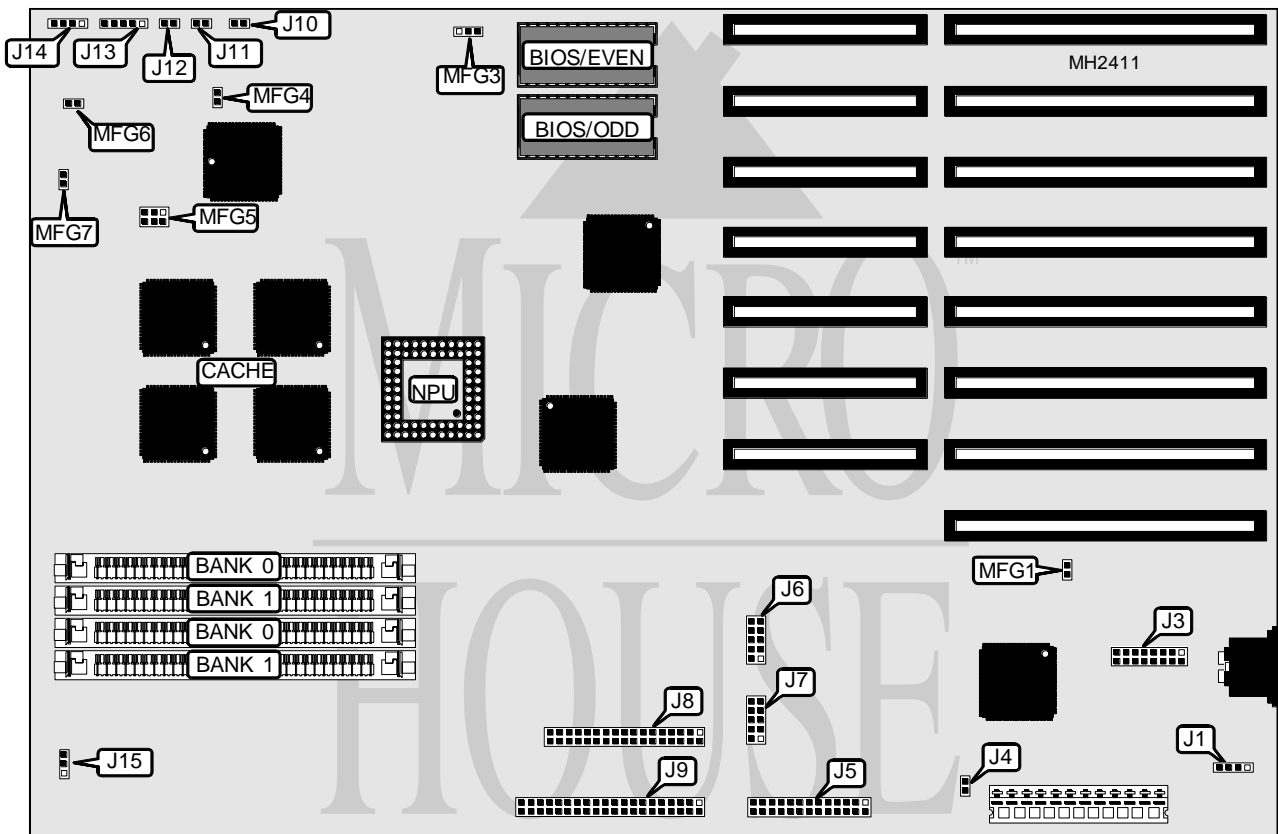


ZEOS INTERNATIONAL, LTD. 386SX-20 CACHE

Processor	80386SX
Processor Speed	20MHz
Chip Set	Unidentified
Max. Onboard DRAM	16MB
Cache	64KB
BIOS	Award
Dimensions	330mm x 218mm
I/O Options	floppy drive interface, game port, IDE interface, parallel port, serial ports (2)
NPU Options	80387SX



CONNECTIONS			
Purpose	Location	Purpose	Location
External battery	J1	Turbo switch	J10
Game port	J3	Reset switch	J11
Parallel port	J5	Turbo LED	J12
Serial port 2	J6	Power LED & keylock	J13
Serial port 1	J7	Speaker	J14
Floppy drive interface	J8	IDE interface LED	J15
IDE interface	J9		

Continued on next page. . .

ZEOS INTERNATIONAL, LTD.

386SX-20 CACHE

... continued from previous page

USER CONFIGURABLE SETTINGS		
Function	Jumper	Position
í Monitor type select CGA	J4	Closed
Monitor type select Mono/EGA/VGA	J4	Open
í Factory configured - do not alter	MFG1	N/A
í Factory configured - do not alter	MFG3	N/A
í Factory configured - do not alter	MFG4	N/A
í Factory configured - do not alter	MFG5	N/A
í Factory configured - do not alter	MFG6	N/A
í Factory configured - do not alter	MFG7	N/A

DRAM CONFIGURATION		
Size	Bank 0	Bank 1
512KB	(2) 256K x 9	NONE
1MB	(2) 256K x 9	(2) 256K x 9
2MB	(2) 1M x 9	NONE
4MB	(2) 1M x 9	(2) 1M x 9
8MB	(2) 4M x 9	NONE
10MB	(2) 4M x 9	(2) 1M x 9
16MB	(2) 4M x 9	(2) 4M x 9