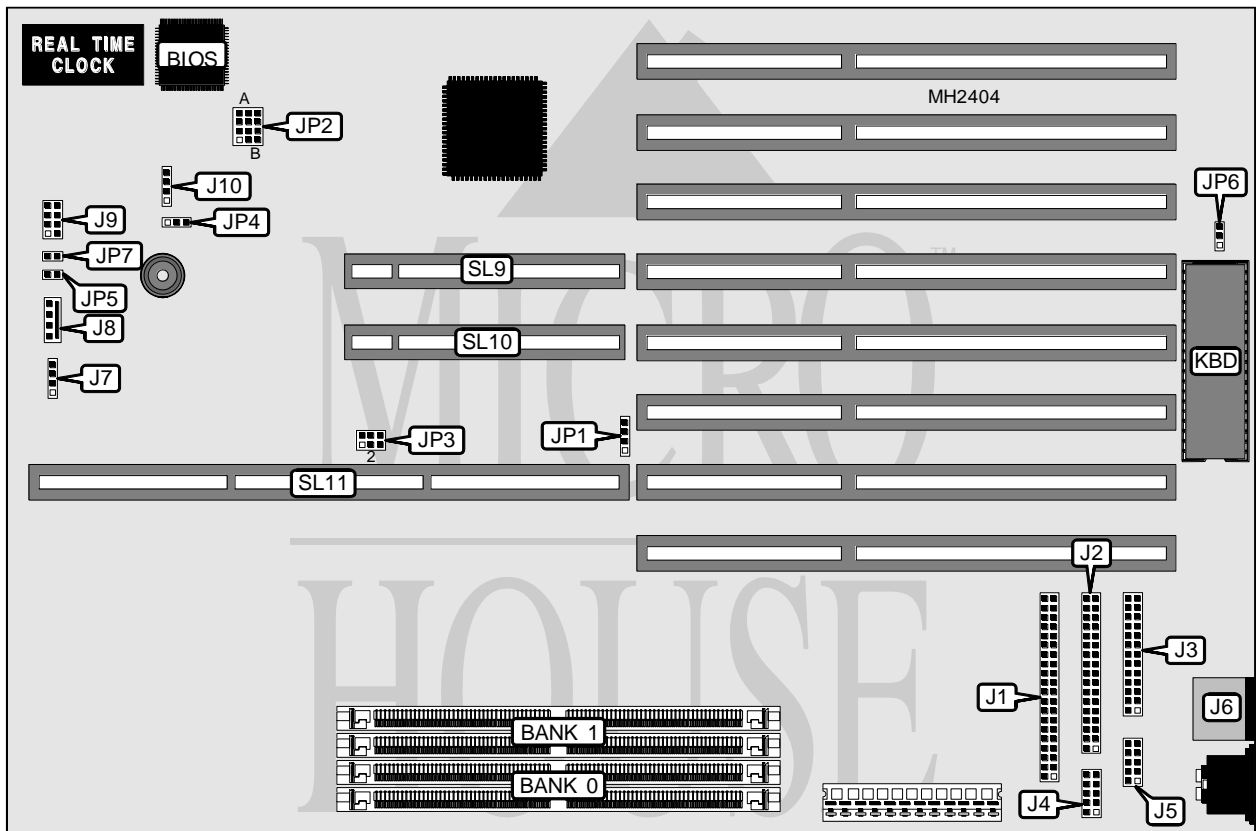


ICL ERGOPRO E5

Processor	Pentium
Processor Speed	33/40/50/60/66 (internal)/80 (internal) MHz
Chip Set	OPTI
Max. Onboard DRAM	128MB
Max. Cache	256KB/1MB
BIOS	ICL
Dimensions	330mm x 218mm
I/O Options	CPU slot, 32-bit VESA local bus slots (2), floppy drive interface, IDE interface, SCSI interface (optional), parallel port, PS/2 mouse port, serial ports (2)



CONNECTIONS			
Purpose	Location	Purpose	Location
IDE interface	J1	Hard drive LED	J7
Floppy drive interface	J2	CPU fan	J8
Parallel port	J3	Power LED	J9
Serial port 1	J4	External speaker	J10
Serial port 2	J5	32-bit VESA local bus slots	SL9 & SL10
PS/2 mouse port	J6	CPU riser slot	SL11

Continued on next page. . .

ICL ERGOPRO E5

... continued from previous page

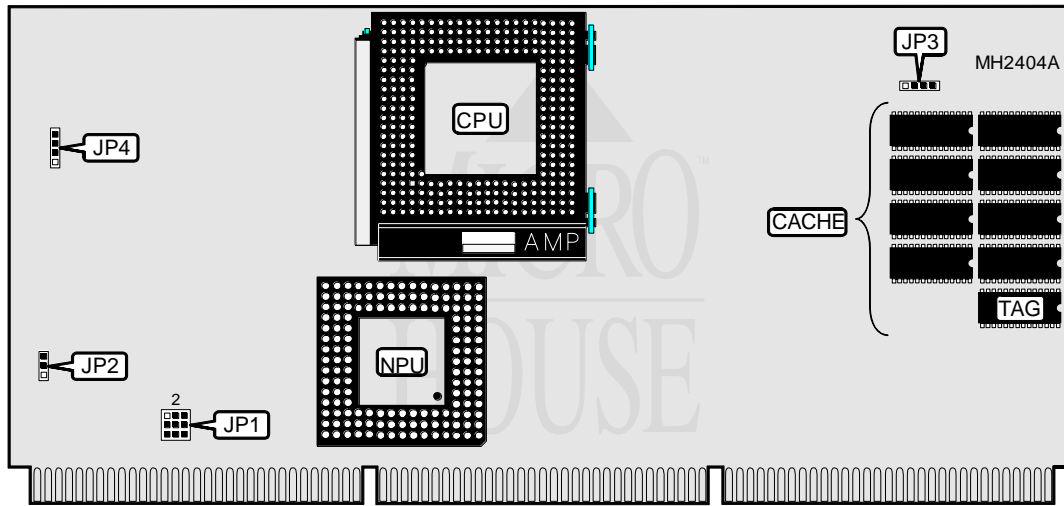
USER CONFIGURABLE SETTINGS		
Function	Jumper	Position
On-board SCSI disabled	JP1	Closed
On-board SCSI enabled	JP1	Open
Dallas CMOS chip installed	JP2/A	Closed
Benchmark CMOS chip installed	JP2/B	Closed
1 local bus wait state	JP3	Pins 2 & 3 closed
0 local bus wait states	JP3	Pins 1 & 2 closed
Factory configured - do not alter	JP3	Pins 5 & 6 closed
On board speaker enabled	JP4	Pins 2 & 3 closed
External speaker enabled	JP4	Pins 1 & 2 closed
Housing type A	JP5	Closed
Housing type B	JP5	Open
System setup unlocked	JP6	Pins 2 & 3 closed
System setup locked	JP6	Pins 1 & 2 closed
Reset button enabled	JP7	Closed
Reset button disabled	JP7	Open

DRAM CONFIGURATION		
Size	Bank 0	Bank 1
8MB	(2) 1M x 36	NONE
16MB	(2) 1M x 36	(2) 1M x 36
16MB	(2) 2M x 36	NONE
24MB	(2) 1M x 36	(2) 2M x 36
32MB	(2) 2M x 36	(2) 2M x 36
32MB	(2) 4M x 36	NONE
40MB	(2) 1M x 36	(2) 4M x 36
48MB	(2) 2M x 36	(2) 4M x 36
64MB	(2) 4M x 36	(2) 4M x 36
64MB	(2) 8M x 36	NONE
72MB	(2) 1M x 36	(2) 8M x 36
80MB	(2) 2M x 36	(2) 8M x 36
96MB	(2) 4M x 36	(2) 8M x 36
128MB	(2) 8M x 36	(2) 8M x 36

Continued on next page...

ICL ERGOPRO E5

... continued from previous page



E5 CPU RISER CARD

SYSTEM SPEED CONFIGURATION	
Speed	JP4
33MHz	Pins 1 & 2, 4 & 5, 8 & 9 closed
40MHz	Pins 2 & 3, 5 & 6, 7 & 8 closed
50MHz	Pins 1 & 2, 5 & 6, 7 & 8 closed
60MHz	Pins 2 & 3, 4 & 5, 7 & 8 closed
66i MHz	Pins 2 & 3, 4 & 5, 7 & 8 closed
80i MHz	Pins 1 & 2, 4 & 5, 7 & 8 closed

CACHE JUMPER CONFIGURATION		
Size	JP3	JP4
256KB	Open	Open
1MB	Pins 1 & 2, 3 & 4 closed	Pins 1 & 2, 3 & 4 closed

CACHE CONFIGURATION			
Size	Bank 0	Bank 1	TAG
256KB	(4) 32K x 8	(4) 32K x 8	Unidentified
1MB	(4) 128K x 8	(4) 128K x 8	Unidentified

Note: The locations of Bank 0 and Bank 1 are unidentified.