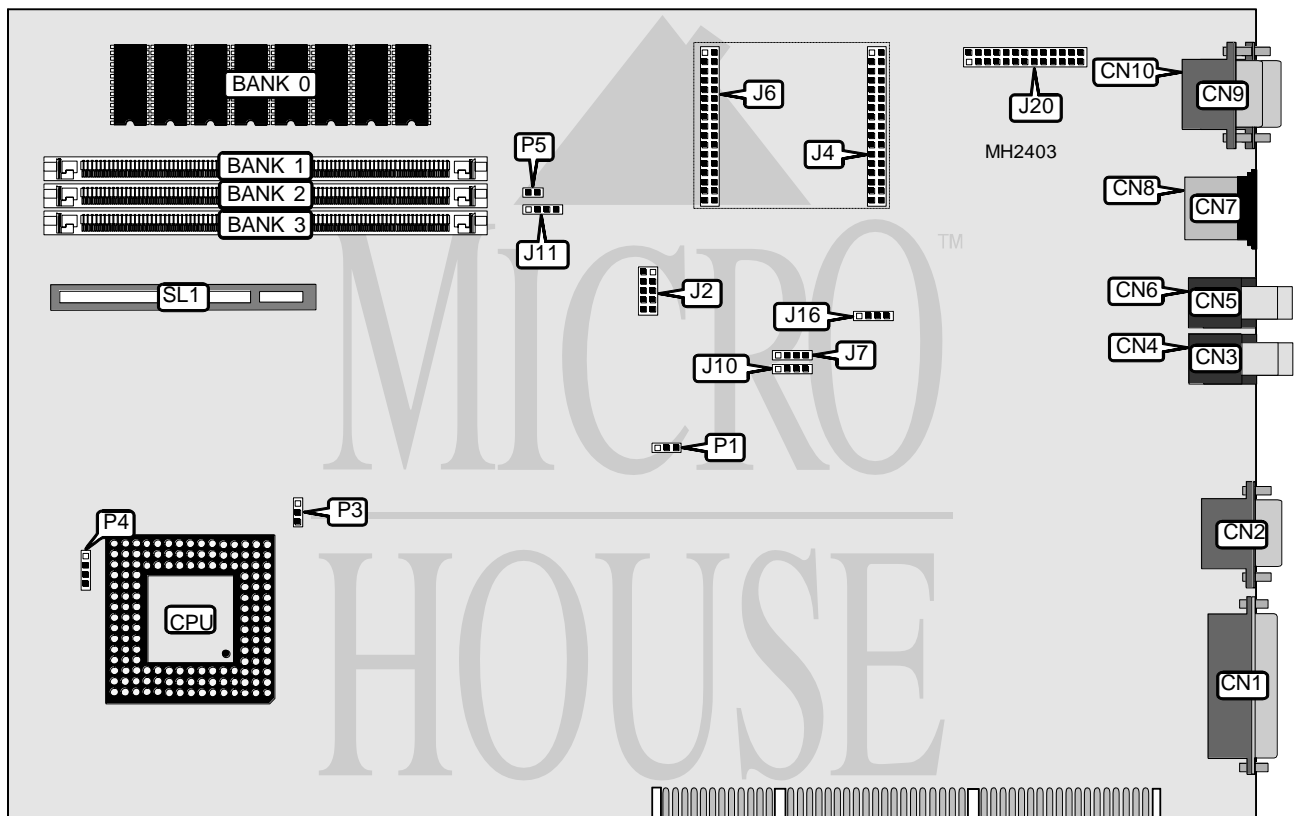


COMPAQ COMPUTER CORPORATION PRESARIO 700/900 SERIES

Processor	80486SX2/80486DX/80486DX2/80486DX4/Pentium Overdrive
Processor Speed	25/33/50(internal)/66(internal)/75(internal)/100(internal)MHz
Chip Set	Compaq
Max. Onboard DRAM	100MB
Cache	128KB (on external cache card)
BIOS	Unidentified
Dimensions	330mm x 218mm
I/O Options	External cache card, game port, parallel port, PS/2 mouse port, serial ports (2), VGA feature connector, line in port, line out port, microphone port, VGA port, CD-ROM line in, TV board line in
NPU Options	None



CONNECTIONS			
Purpose	Location	Purpose	Location
Parallel port	CN1	VGA port	CN10
Game port	CN2	Serial port 2	J2
Line in port	CN3	Video upgrade interface	J4 & J6
Line out port	CN4	CD-ROM line in	J10
Microphone port	CN5	External battery	J11
Speaker	CN6	TV board line in	J16
PS/2 mouse port	CN7	VGA feature connector	J20
Keyboard	CN8	External cache card	SL1
Serial port 1	CN9		

Continued on next page . . .

COMPAQ COMPUTER CORPORATION PRESARIO 700/900 SERIES

... continued from previous page

USER CONFIGURABLE SETTINGS		
Function	Jumper	Position
í Factory configured - do not alter	J7	Open
í Cache type select write through	P3	pins 1 & 2 closed
Cache type select write back	P3	pins 2 & 3 closed
í CMOS memory normal operation	P5	Closed
CMOS memory clear	P5	Open

DRAM CONFIGURATION				
Size	Bank 0	Bank 1	Bank 2	Bank 3
4MB	(8) 411000	NONE	NONE	NONE
8MB	(8) 411000	(1) 1M x 36	NONE	NONE
12MB	(8) 411000	(1) 1M x 36	(1) 1M x 36	NONE
12MB	(8) 411000	(1) 2M x 36	NONE	NONE
16MB	(8) 411000	(1) 1M x 36	(1) 1M x 36	(1) 1M x 36
16MB	(8) 411000	(1) 1M x 36	(1) 2M x 36	NONE
16MB	(8) 411000	(1) 2M x 36	(1) 1M x 36	NONE
20MB	(8) 411000	(1) 2M x 36	(1) 1M x 36	(1) 1M x 36
20MB	(8) 411000	(1) 2M x 36	(1) 2M x 36	NONE
20MB	(8) 411000	(1) 4M x 36	NONE	NONE
24MB	(8) 411000	(1) 1M x 36	(1) 2M x 36	(1) 2M x 36
24MB	(8) 411000	(1) 1M x 36	(1) 4M x 36	NONE
24MB	(8) 411000	(1) 4M x 36	(1) 1M x 36	NONE
28MB	(8) 411000	(1) 2M x 36	(1) 2M x 36	(1) 2M x 36
28MB	(8) 411000	(1) 2M x 36	(1) 4M x 36	NONE
28MB	(8) 411000	(1) 4M x 36	(1) 1M x 36	(1) 1M x 36
28MB	(8) 411000	(1) 4M x 36	(1) 2M x 36	NONE
36MB	(8) 411000	(1) 4M x 36	(1) 2M x 36	(1) 2M x 36
36MB	(8) 411000	(1) 8M x 36	NONE	NONE
40MB	(8) 411000	(1) 1M x 36	(1) 4M x 36	(1) 4M x 36
40MB	(8) 411000	(1) 1M x 36	(1) 8M x 36	NONE
40MB	(8) 411000	(1) 8M x 36	(1) 1M x 36	NONE
44MB	(8) 411000	(1) 2M x 36	(1) 4M x 36	(1) 4M x 36
44MB	(8) 411000	(1) 2M x 36	(1) 8M x 36	NONE
44MB	(8) 411000	(1) 8M x 36	(1) 1M x 36	(1) 1M x 36
44MB	(8) 411000	(1) 8M x 36	(1) 2M x 36	NONE
52MB	(8) 411000	(1) 4M x 36	(1) 4M x 36	(1) 4M x 36
52MB	(8) 411000	(1) 4M x 36	(1) 8M x 36	NONE
52MB	(8) 411000	(1) 8M x 36	(1) 2M x 36	(1) 2M x 36
52MB	(8) 411000	(1) 8M x 36	(1) 4M x 36	NONE
68MB	(8) 411000	(1) 4M x 36	(1) 4M x 36	NONE
68MB	(8) 411000	(1) 8M x 36	(1) 4M x 36	(1) 4M x 36
68MB	(8) 411000	(1) 8M x 36	(1) 8M x 36	NONE
72MB	(8) 411000	(1) 1M x 36	(1) 8M x 36	(1) 8M x 36
76MB	(8) 411000	(1) 2M x 36	(1) 8M x 36	(1) 8M x 36
84MB	(8) 411000	(1) 4M x 36	(1) 8M x 36	(1) 8M x 36
100MB	(8) 411000	(1) 8M x 36	(1) 8M x 36	(1) 8M x 36

Note: Bank 0 is factory installed 4MB and is not configurable.

Continued on next page. . .

COMPAQ COMPUTER CORPORATION

PRESARIO 700/900 SERIES

... continued from previous page

CPU SPEED CONFIGURATION	
Speed	P1
25MHz	pins 1 & 2 closed
33MHz	pins 2 & 3 closed
50iMHz	pins 1 & 2 closed
66iMHz	pins 2 & 3 closed
75iMHz	pins 1 & 2 closed
100iMHz	pins 2 & 3 closed

CPU CLOCK SPEED CONFIGURATION (80486DX4)	
Speed	P4
2.0x	pins 2 & 3 closed
2.5x	pins 1 & 2 closed
3.0x	pins 3 & 4 closed