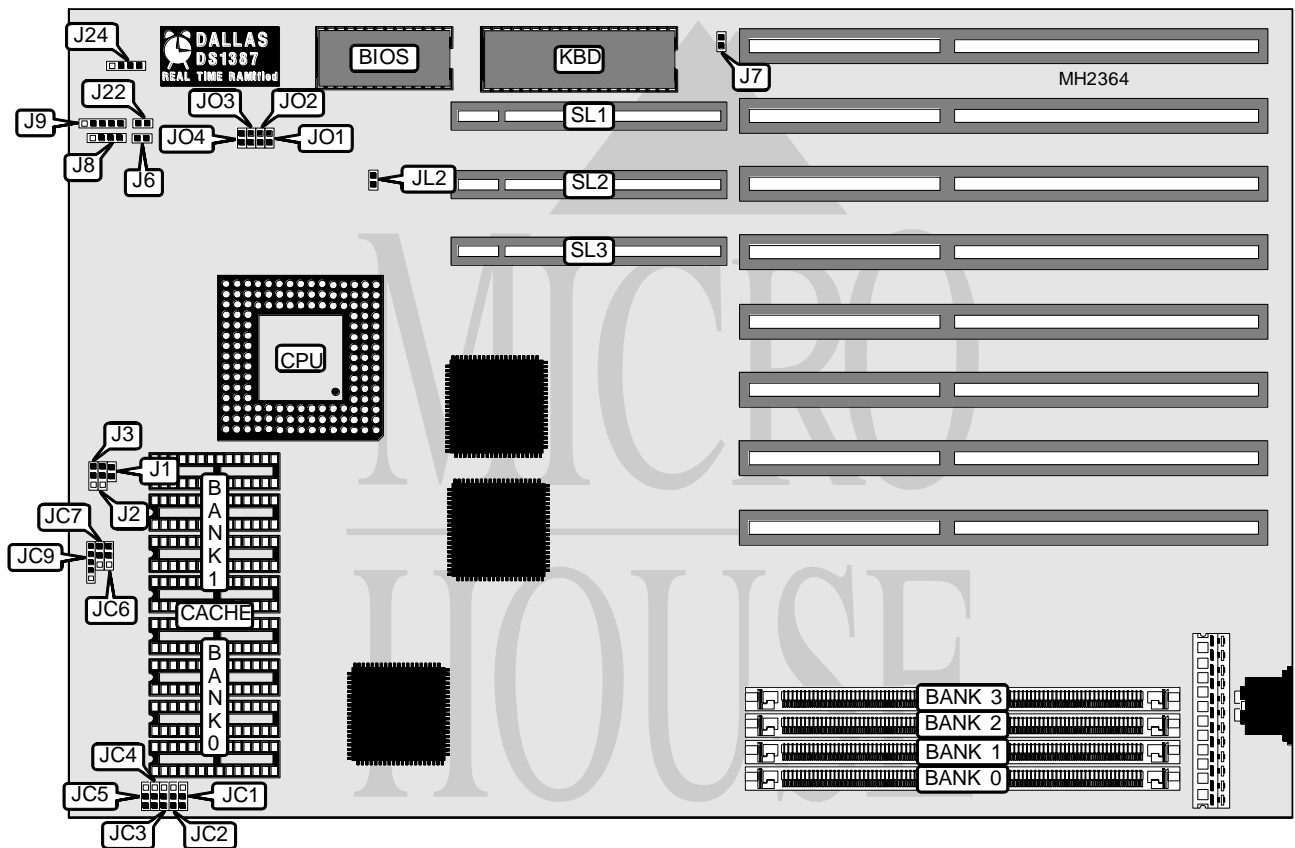


NORTHGATE COMPUTER SYSTEMS, INC.

ZXP EISA/VESA

Processor 80486SX/80487SX/80486DX/ODP486SX/80486DX2
Processor Speed 20/25/33/50(internal)/50/66(internal)MHz
Chip Set SIS
Max. Onboard DRAM 256MB
Cache 64/128/256/512KB
BIOS AMI/Phoenix
Dimensions 330mm x 218mm
I/O Options 32-bit VESA local bus slots (3)
NPU Options None



CONNECTIONS			
Purpose	Location	Purpose	Location
Reset switch	J6	Turbo switch	J22
Speaker	J8	Turbo LED	J24
Power LED & keylock	J9	32-bit VESA local bus slots	SL1 - SL3

Continued on next page. . .

NORTHGATE COMPUTER SYSTEMS, INC.

ZXP EISA/VESA

... continued from previous page

USER CONFIGURABLE SETTINGS		
Function	Jumper	Position
í Monitor type select color	J7	Closed
Monitor type select monochrome	J7	Open

DRAM CONFIGURATION				
Size	Bank 0	Bank 1	Bank 2	Bank 3
1MB	(1) 256K x 36	NONE	NONE	NONE
2MB	(1) 256K x 36	(1) 256K x 36	NONE	NONE
2MB	(1) 512K x 36	NONE	NONE	NONE
4MB	(1) 256K x 36	(1) 256K x 36	(1) 512K x 36	NONE
4MB	(1) 512K x 36	NONE	(1) 512K x 36	NONE
4MB	(1) 1M x 36	NONE	NONE	NONE
6MB	(1) 512K x 36	(1) 512K x 36	(1) 256K x 36	NONE
6MB	(1) 512K x 36	NONE	(1) 1M x 36	NONE
8MB	(1) 1M x 36	(1) 1M x 36	NONE	NONE
8MB	(1) 2M x 36	NONE	NONE	NONE
10MB	(1) 256K x 36	(1) 256K x 36	(1) 1M x 36	(1) 1M x 36
10MB	(1) 512K x 36	NONE	(1) 1M x 36	(1) 1M x 36
12MB	(1) 1M x 36	(1) 1M x 36	(1) 1M x 36	NONE
16MB	(1) 1M x 36	(1) 1M x 36	(1) 1M x 36	(1) 1M x 36
16MB	(1) 2M x 36	NONE	(1) 2M x 36	NONE
16MB	(1) 4M x 36	NONE	NONE	NONE
18MB	(1) 256K x 36	(1) 256K x 36	(1) 4M x 36	NONE
18MB	(1) 512K x 36	NONE	(1) 4M x 36	NONE
20MB	(1) 1M x 36	(1) 4M x 36	NONE	NONE
24MB	(1) 1M x 36	(1) 1M x 36	(1) 4M x 36	NONE
32MB	(1) 4M x 36	(1) 4M x 36	NONE	NONE
34MB	(1) 512K x 36	NONE	(1) 4M x 36	(1) 4M x 36
36MB	(1) 1M x 36	(1) 4M x 36	(1) 4M x 36	NONE
40MB	(1) 1M x 36	(1) 1M x 36	(1) 4M x 36	(1) 4M x 36
48MB	(1) 4M x 36	(1) 4M x 36	(1) 4M x 36	NONE
64MB	(1) 4M x 36	(1) 4M x 36	(1) 4M x 36	(1) 4M x 36
64MB	(1) 16M x 36	NONE	NONE	NONE
128MB	(1) 16M x 36	(1) 16M x 36	NONE	NONE
172MB	(1) 16M x 36	(1) 16M x 36	(1) 16M x 36	NONE
256MB	(1) 16M x 36	(1) 16M x 36	(1) 16M x 36	(1) 16M x 36

CACHE CONFIGURATION			
Size	Bank 0	Bank 1	TAG
64KB	(4) 8K x 8	(4) 8K x 8	(1) 64K x 1
128KB	(4) 32K x 8	NONE	(1) 64K x 1
256KB	(4) 32K x 8	(4) 32K x 8	(1) 64K x 1
512KB	(4) 128K x 8	NONE	(1) 64K x 1

Note: The location of the TAG socket is unidentified.

Continued on next page. . .

NORTHGATE COMPUTER SYSTEMS, INC.

ZXP EISA/VESA

... continued from previous page

CACHE JUMPER CONFIGURATION								
Size	JC1	JC2	JC3	JC4	JC5	JC6	JC7	JC9
64KB	1 & 2	1 & 2	1 & 2	1 & 2	1 & 2	1 & 2	1 & 2	2 & 3
128KB	2 & 3	2 & 3	1 & 2	1 & 2	1 & 2	1 & 2	2 & 3	1 & 2
256KB	2 & 3	2 & 3	2 & 3	1 & 2	1 & 2	2 & 3	2 & 3	4 & 5
512KB	2 & 3	2 & 3	2 & 3	2 & 3	2 & 3	2 & 3	2 & 3	1 & 2

Note: Pins designated should be in the closed position.

CPU TYPE CONFIGURATION			
Type	J1	J2	J3
80486SX	Closed	pins 2 & 3 closed	pins 2 & 3 closed
ODP486SX	Closed	pins 1 & 2 closed	pins 2 & 3 closed
80487SX	Closed	pins 1 & 2 closed	pins 2 & 3 closed
80486DX/DX2	Open	Open	pins 1 & 2 closed

CPU SPEED CONFIGURATION					
Speed	JL2	JO1	JO2	JO3	JO4
20MHz	Open	Open	Closed	Closed	Closed
25MHz	Open	Closed	Open	Closed	Closed
33MHz	Open	Closed	Closed	Open	Closed
50iMHz	Open	Closed	Open	Closed	Closed
50MHz	Closed	Open	Open	Open	Open
66iMHz	Open	Closed	Closed	Open	Closed