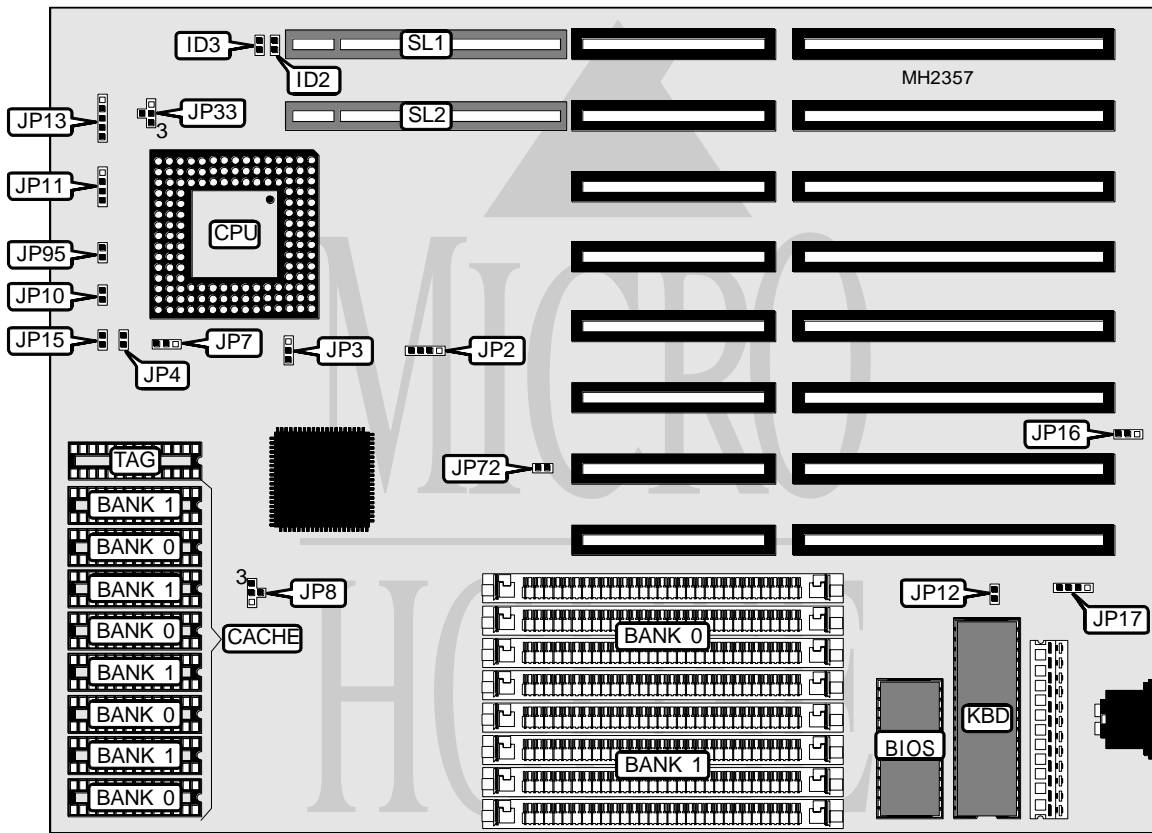


NORTHGATE COMPUTER SYSTEMS, INC.

NORTHGATE SUPERB CLT486VL2

Processor	80486SX/80487SX/80486DX/80486DX2/Pentium Overdrive
Processor Speed	25/33/40/50(internal)/50/66(internal)MHz
Chip Set	Unidentified
Max. Onboard DRAM	32MB
Cache	64/128/256KB
BIOS	AMI
Dimensions	254mm x 220mm
I/O Options	32-bit VESA local bus slots (2)
NPU Options	None



CONNECTIONS			
Purpose	Location	Purpose	Location
Turbo LED	JP10	External battery	JP17
Speaker	JP11	Turbo switch	JP95
Power LED & keylock	JP13	32-bit VESA local bus slots	SL1 & SL2
Reset switch	JP15		

Continued on next page. . .

NORTHGATE COMPUTER SYSTEMS, INC.

NORTHGATE SUPERB CLT486VL2

... continued from previous page

USER CONFIGURABLE SETTINGS

Function	Jumper	Position
í PQFP CPU disabled	JP1	Closed
PQFP CPU enabled	JP1	Open
í Monitor type select monochrome	JP12	Open
Monitor type select color	JP12	Closed
í CMOS memory normal operation	JP16	pins 1 & 2 closed
CMOS memory clear	JP16	pins 2 & 3 closed

Note: The location of JP1 is unidentified. If board does not have PQFP CPU, JP1 will not be present.

DRAM CONFIGURATION

Size	Bank 0	Bank 1
1MB	(4) 256K x 9	NONE
2MB	(4) 256K x 9	(4) 256K x 9
4MB	(4) 1M x 9	NONE
5MB	(4) 256K x 9	(4) 1M x 9
5MB	(4) 1M x 9	(4) 256K x 9
8MB	(4) 1M x 9	(4) 1M x 9
16MB	(4) 4M x 9	NONE
17MB	(4) 256K x 9	(4) 4M x 9
17MB	(4) 4M x 9	(4) 256K x 9
20MB	(4) 1M x 9	(4) 4M x 9
20MB	(4) 4M x 9	(4) 1M x 9
32MB	(4) 4M x 9	(4) 4M x 9

CACHE CONFIGURATION

Size	Bank 0	Bank 1	TAG
64KB	(4) 8K x 8	(4) 8K x 8	(1) 8K x 8
128KB	(4) 32K x 8	NONE	(1) 8K x 8
256KB	(4) 32K x 8	(4) 32K x 8	(1) 32K x 8

CACHE JUMPER CONFIGURATION

Size	JP7	JP8
64KB	pins 2 & 3 closed	pins 2 & 4 closed
128KB	pins 1 & 2 closed	pins 2 & 3 closed
256KB	pins 1 & 2 closed	pins 1 & 2 closed

CPU SPEED/TYPE CONFIGURATION

Type	JP2	JP3	JP4	JP33	JP72
80486SX-25 (PQFP)	Open	Open	Open	2 & 3	Closed
80486SX-25 (PGA)	2 & 3	Open	Open	2 & 3	Closed
80486SX-33 (PQFP)	Open	Open	Open	2 & 3	Open
80487SX-25	1 & 2, 3 & 4	1 & 2	Closed	2 & 3	Closed
80486DX-33	1 & 2, 3 & 4	2 & 3	Open	2 & 3	Open
80486DX-50	1 & 2, 3 & 4	2 & 3	Open	1 & 2	Open

Note: Pins designated should be in the closed position.

Continued on next page...

NORTHGATE COMPUTER SYSTEMS, INC.

NORTHGATE SUPERB

... continued from previous page

CPU SPEED/TYPE CONFIGURATION (CON'T)					
Type	JP2	JP3	JP4	JP33	JP72
80486DX2-50	1 & 2, 3 & 4	2 & 3	Open	2 & 3	Closed
80486DX2-66	1 & 2, 3 & 4	2 & 3	Open	2 & 3	Open
Pentium Overdrive	1 & 2, 3 & 4	1 & 2	Closed	2 & 3	Closed
Note: Pins designated should be in the closed position.					

VESA WAIT STATE CONFIGURATION	
Wait states	ID2
0 wait states	Open
1 wait state	Closed

BUS SPEED CONFIGURATION	
CPU speed	ID3
<= 33MHz	Open
> 33MHz	Closed