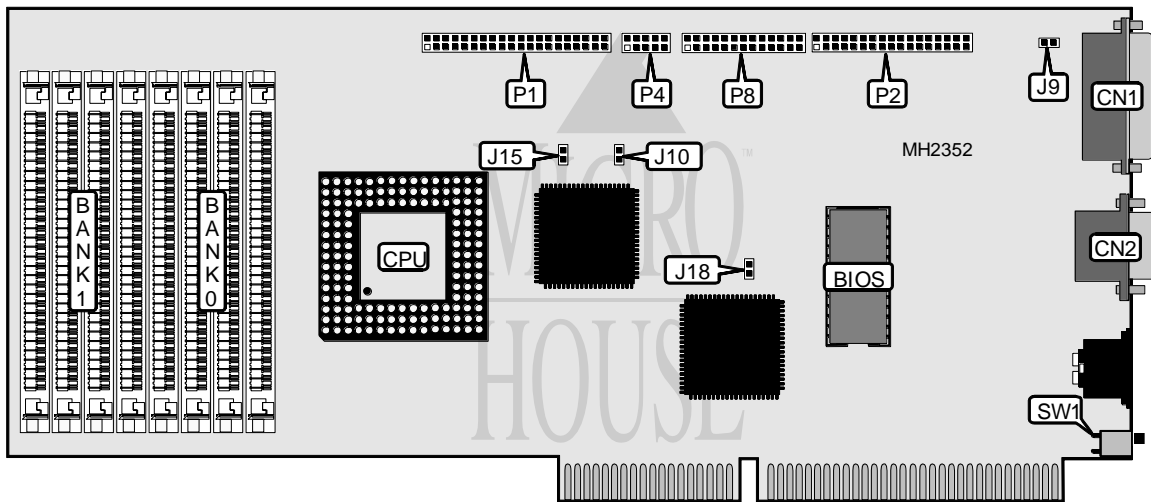


MULTI-TECH SYSTEMS, INC.

MT-486SBC-33SX/33DX

Processor	80486SX/80486DX
Processor Speed	33MHz
Chip Set	Unidentified
Max. Onboard DRAM	32MB
Cache	None
BIOS	Phoenix
Dimensions	105mm x 34mm
I/O Options	Floppy drive interface, IDE interface, parallel port, serial ports (2), VGA port
NPU Options	None



CONNECTIONS			
Purpose	Location	Purpose	Location
VGA port	CN1	IDE interface	P1
Serial port 1	CN2	Floppy drive interface	P2
Power LED	J9	Serial port 2	P4
Speaker	J10	Parallel port	P8
IDE interface LED	J15	Reset switch	SW1

continued on next page. . .

MULTI-TECH SYSTEMS, INC.
MT-486SBC-33SX/33DX

... continued from previous page

USER CONFIGURABLE SETTINGS		
Function	Jumper	Position
í DCD reset enabled(modem on COM1)	J18	Closed
DCD reset disabled(other peripheral on COM1)	J18	Open

DRAM CONFIGURATION		
Size	Bank 0	Bank 1
4MB	(4) 1M x 9	NONE
8MB	(4) 1M x 9	(4) 1M x 9
16MB	(4) 4M x 9	NONE
20MB	(4) 4M x 9	(4) 1M x 9
32MB	(4) 4M x 9	(4) 4M x 9