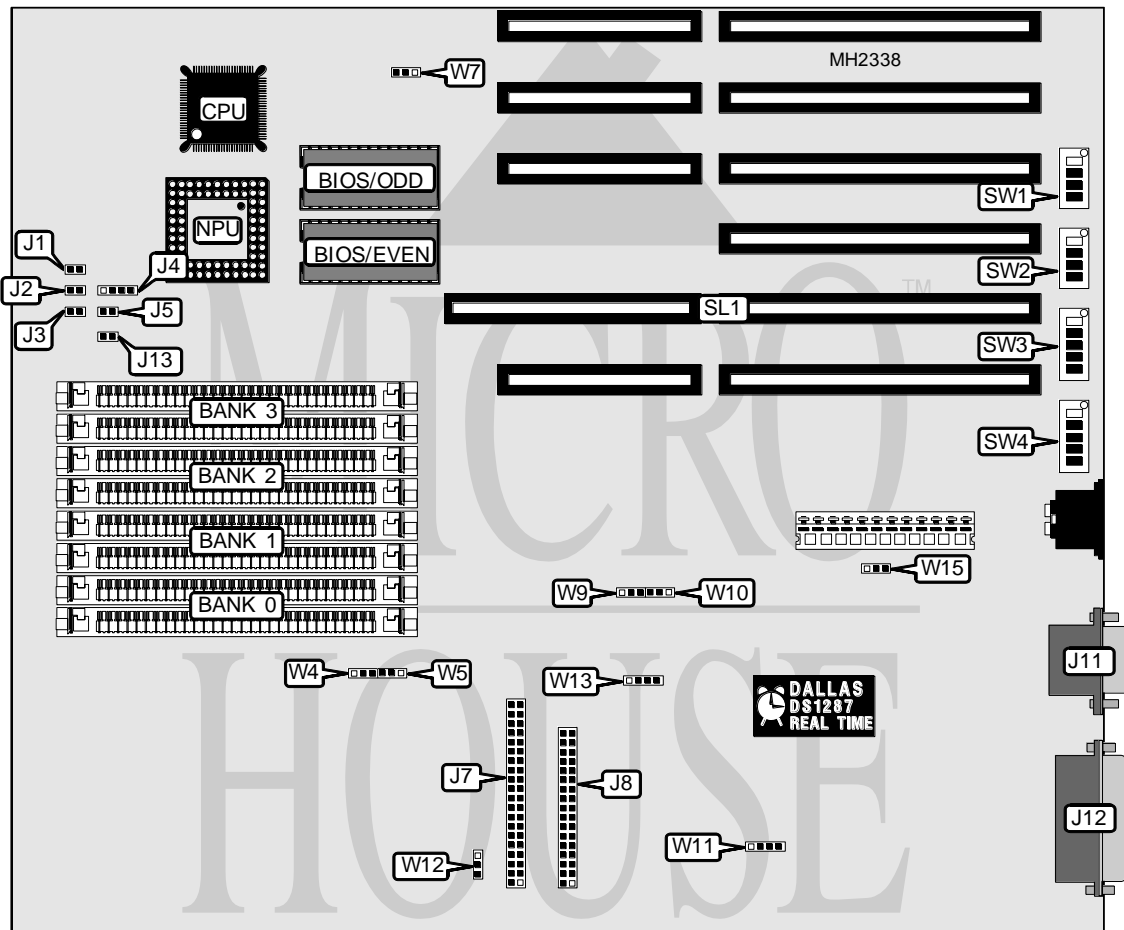


HYUNDAI ELECTRONICS, INC.

SUPER-386S

Processor	80386SX
Processor Speed	16MHz
Chip Set	VLSI
Max. Onboard DRAM	16MB (8MB on external memory card)
Cache	None
BIOS	Phoenix
Dimensions	330mm x 218mm
I/O Options	32-bit external memory card, floppy drive interface, IDE interface, parallel port, serial port
NPU Options	80387SX



CONNECTIONS			
Purpose	Location	Purpose	Location
Reset switch	J1	IDE interface	J7
Turbo LED	J2	Floppy drive interface	J8
Turbo LED	J3	Serial port	J11
Speaker	J4	Parallel port	J12
IDE interface LED	J5	32-bit external memory card	SL1

Continued on next page. . .

HYUNDAI ELECTRONICS, INC.
SUPER - 386S

... continued from previous page

USER CONFIGURABLE SETTINGS		
Function	Jumper/Switch	Position
í NPU disabled	J13	Closed
NPU enabled	J13	Open
í COM 1 IRQ select IRQ4	SW1/1	On
COM 1 IRQ select IRQ3	SW1/1	Off
í COM 2 IRQ select IRQ3	SW1/2	Off
COM 2 IRQ select IRQ4	SW1/2	On
í LPT 2 IRQ select IRQ5	SW1/3	Off
LPT 2 IRQ select IRQ7	SW1/3	On
í LPT 1 IRQ select IRQ7	SW1/4	On
LPT 1 IRQ select IRQ5	SW1/4	Off
í Serial port enabled	SW2/1	Off
Serial port disabled	SW2/1	On
í Serial port select COM1	SW2/2	Off
Serial port select COM2	SW2/2	On
í Parallel port enabled	SW2/3	Off
Parallel port disabled	SW2/3	On
í Parallel port select LPT1	SW2/4	Off
Parallel port select LPT2	SW2/4	On
í DRAM size select 256K	W7	pins 1 & 2 closed
DRAM size select 1MB	W7	pins 2 & 3 closed
í Monitor type select color	W12	pins 1 & 2 closed
Monitor type select monochrome	W12	pins 2 & 3 closed
í Hard drive adapter select Conner CP344/3024 E4	W15	pins 1 & 2 closed
Hard drive adapter select Conner CP342/3022 E3	W15	pins 2 & 3 closed

Note: The location of W7 is unidentified.

DRAM CONFIGURATION				
Size	Bank 0	Bank 1	Bank 2	Bank 3
512KB	(2) 256K x 9	NONE	NONE	NONE
1MB	(2) 256K x 9	(2) 256K x 9	NONE	NONE
2MB	(2) 256K x 9	(2) 256K x 9	(2) 256K x 9	(2) 256K x 9
2MB	(2) 1M x 9	NONE	NONE	NONE
4MB	(2) 1M x 9	(2) 1M x 9	NONE	NONE
5MB	(2) 1M x 9	(2) 1M x 9	(2) 256K x 9	(2) 256K x 9
5MB	(2) 256K x 9	(2) 256K x 9	(2) 1M x 9	(2) 1M x 9
8MB	(2) 1M x 9	(2) 1M x 9	(2) 1M x 9	(2) 1M x 9

DRAM SWITCH CONFIGURATION						
Bank 0	Bank 1	Bank 2	Bank 3	SW3/1	SW3/2	SW3/3
Installed	Installed	Not installed	Not installed	Off	On	On
Installed	Installed	Installed	Not installed	Off	Off	On
Installed	Installed	Installed	Installed	Off	Off	Off

Continued on next page. . .

HYUNDAI ELECTRONICS, INC.

SUPER-386S

... continued from previous page

DRAM SWITCH CONFIGURATION					
Bank 0	Bank 1	Bank 2	Bank 3	SW3/4	SW3/5
512KB	512KB	512KB	512KB	On	On
2MB	2MB	512KB	512KB	Off	On
2MB	2MB	2MB	2MB	Off	Off

FAST MEMORY CONFIGURATION					
Size	SW4/1	SW4/2	SW4/3	SW4/4	SW4/5
1MB	On	On	On	On	On
2MB	Off	On	On	On	On
4MB	Off	Off	On	On	On
5MB	Off	Off	Off	On	On
8MB	Off	Off	Off	Off	On
16MB	Off	Off	Off	Off	Off

MEMORY MODE CONFIGURATION				
Mode	W1	W2	W3	W6
Page mode	pins 1 & 2 closed	pins 1 & 2 closed	pins 1 & 2 closed	pins 1 & 2 closed
Normal mode	pins 2 & 3 closed	pins 2 & 3 closed	pins 2 & 3 closed	pins 2 & 3 closed

Note: The locations of W1, W2, W3, & W6 are unidentified.

MEMORY BANK SIZE CONFIGURATION		
Type	W9	W10
512KB installed in Banks 0, 1, 2, 3	pins 2 & 3 closed	pins 2 & 3 closed
2MB installed in Banks 0, 1, 2, 3	pins 1 & 2 closed	pins 1 & 2 closed

CPU SPEED CONFIGURATION	
Speed	W14
Keyboard control	pins 1 & 2 closed
Low	pins 2 & 3 closed
High	Open

Note: The location of W14 is unidentified.

FLOPPY DRIVE SPEED CONFIGURATION	
Setting	W11
Two speed spindle motor (logic = 0, jumper on)	pins 1 & 2 closed
Precomp value (logic = 0 jumper on - 187NS; logic = 1 jumper off - 125NS)	pins 3 & 4 closed

FLOPPY/HARD DRIVE CONFIGURATION	
Setting	W13
On board floppy drive enabled	Open
On board floppy drive disabled	pins 3 & 4 closed
On board hard drive enabled	Open
On board hard drive disabled	pins 1 & 2 closed

Continued on next page...

HYUNDAI ELECTRONICS, INC.
SUPER-386S*... continued from previous page*

I/O WAIT STATE CONFIGURATION		
Wait state	W4	W5
4 W/S (8-bit memory)	pins 1 & 2 closed	N/A
5 W/S (8-bit memory)	pins 2 & 3 closed	N/A
1 W/S (16-bit memory)	N/A	pins 1 & 2 closed
2 W/S (16-bit memory)	N/A	pins 2 & 3 closed