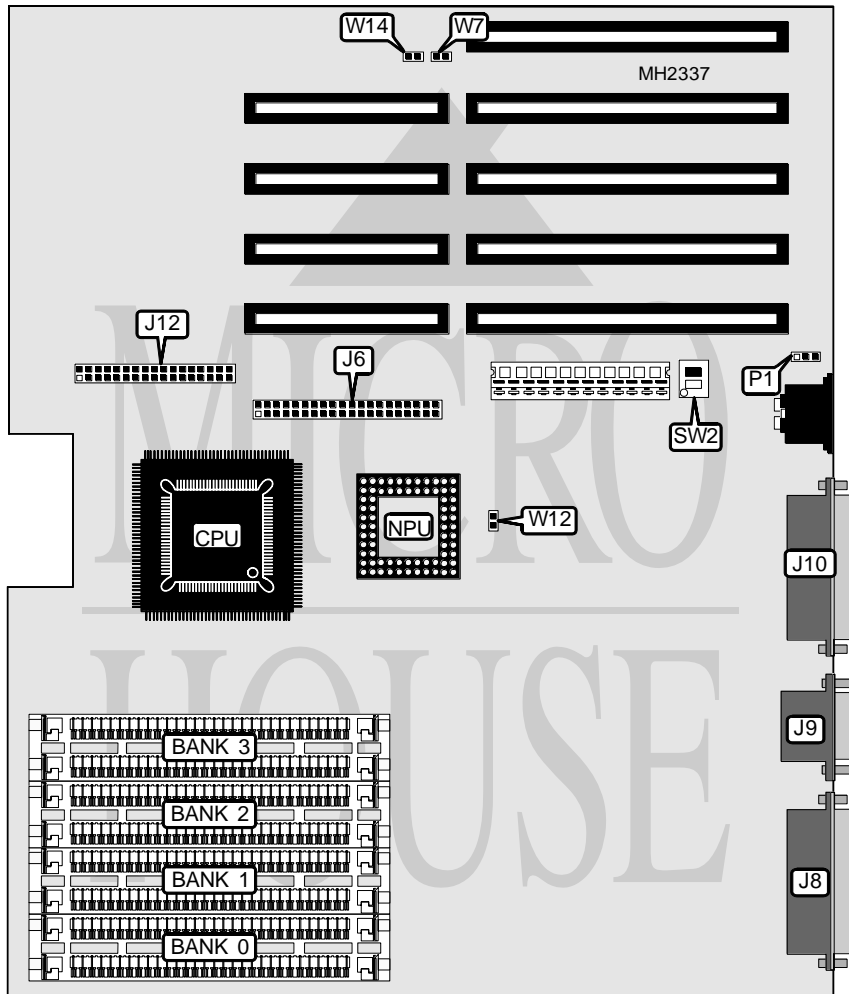


MAGNAVOX 386 SX

Processor	80386SX
Processor Speed	8/16MHz
Chip Set	Unidentified
Max. Onboard DRAM	8MB
Cache	None
BIOS	Unidentified
Dimensions	270mm x 218mm
I/O Options	Floppy drive interface, IDE interface, parallel port, serial ports (2)
NPU Options	80387SX



CONNECTIONS			
Purpose	Location	Purpose	Location
IDE interface	J6	Parallel port	J10
Serial port 1	J8	Floppy drive interface	J12
Serial port 2	J9	External battery	P1

Continued on next page. . .

MAGNAVOX

386 SX

... continued from previous page

USER CONFIGURABLE SETTINGS		
Function	Jumper/Switch	Position
í Factory configured - do not alter	SW2/1	N/A
í Monitor type select color	SW2/2	On
Monitor type select monochrome	SW2/2	Off
í IDE interface enabled	W7	Open
IDE interface disabled	W7	Closed
í NPU enabled	W12	Open
NPU disabled	W12	Closed
í Floppy drive interface enabled	W14	Open
Floppy drive interface disabled	W14	Closed

DRAM CONFIGURATION				
Size	Bank 0	Bank 1	Bank 2	Bank 3
1MB	(2) 256K x 9	(2) 256K x 9	NONE	NONE
1.5MB	(2) 256K x 9	(2) 256K x 9	(2) 256K x 9	NONE
2MB	(2) 256K x 9	(2) 256K x 9	(2) 256K x 9	(2) 256K x 9
2.5MB	(2) 1M x 9	(2) 256K x 9	NONE	NONE
3MB	(2) 256K x 9	(2) 256K x 9	(2) 1M x 9	NONE
4MB	(2) 1M x 9	(2) 1M x 9	NONE	NONE
4.5MB	(2) 1M x 9	(2) 1M x 9	(2) 256K x 9	NONE
5MB	(2) 256K x 9	(2) 256K x 9	(2) 1M x 9	(2) 1M x 9
6MB	(2) 1M x 9	(2) 1M x 9	(2) 1M x 9	NONE
8MB	(2) 1M x 9	(2) 1M x 9	(2) 1M x 9	(2) 1M x 9