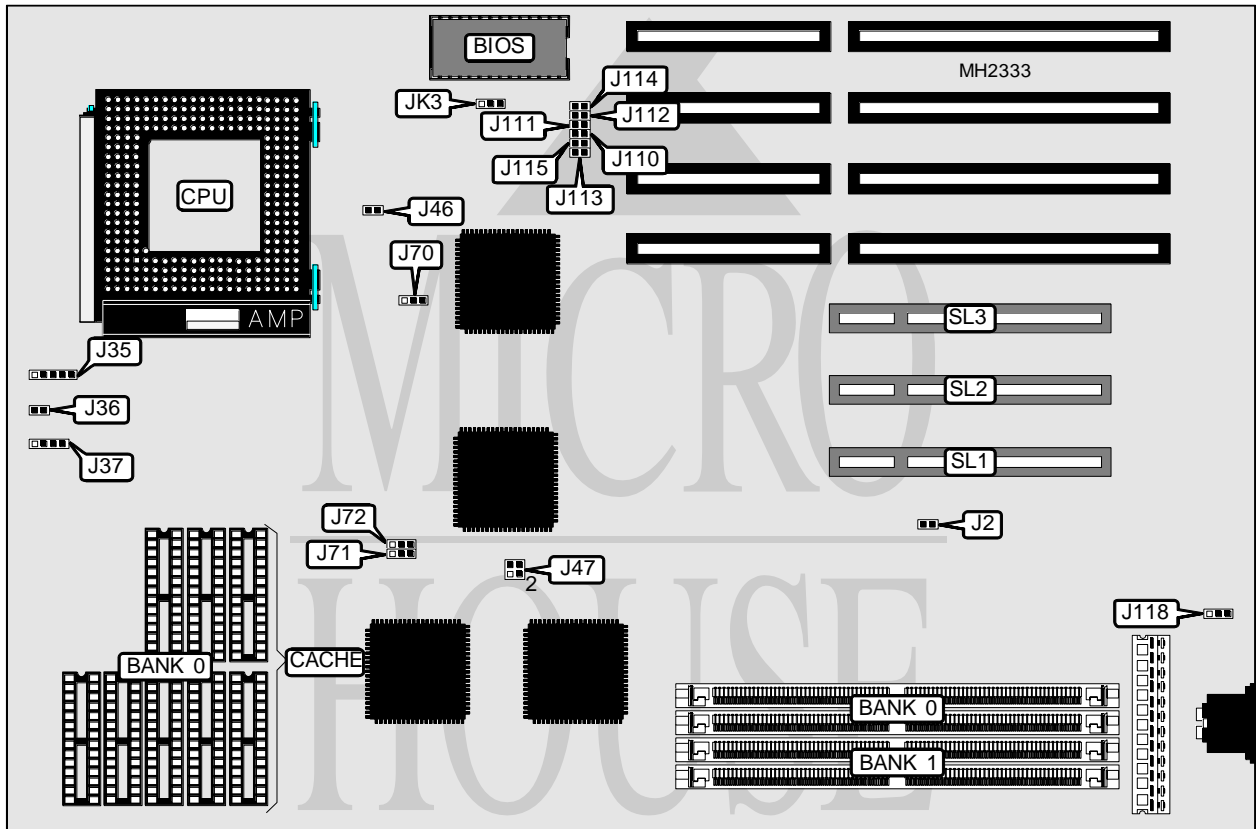


PINE TECHNOLOGY

PT - 7 2 6

Processor	Pentium
Processor Speed	60/66MHz
Chip Set	Intel
Max. Onboard DRAM	128MB
Cache	256KB
BIOS	AMI
Dimensions	330mm x 218mm
I/O Options	32-bit PCI slots (3)
NPU Options	None



CONNECTIONS			
Purpose	Location	Purpose	Location
Power LED & keylock	J35	Speaker	J37
Reset switch	J36	32-bit PCI slots	SL1 - SL3

Continued on next page. . .

PINE TECHNOLOGY

PT - 726

... continued from previous page

USER CONFIGURABLE SETTINGS		
Function	Jumper	Position
í CMOS memory normal operation	J2	Open
CMOS memory clear	J2	Closed
í Cache mode select write back	J46	Open
Cache mode select write through	J46	Closed
í Parity check enabled	J47	pins 1 & 2, 3 & 4 closed
Parity check disabled	J47	pins 1 & 3, 2 & 4 closed
í Cache type select standard SRAM	J70	pins 1 & 2 closed
Cache type select burst SRAM	J70	pins 2 & 3 closed
í Power good signal detect from power supply	J118	pins 2 & 3 closed
Power good signal detect from board	J118	pins 1 & 2 closed
í EPROM type select 27C512/27C010	JK3	pins 2 & 3 closed
EPROM type select 27C010/27C020	JK3	pins 1 & 2 closed

DRAM CONFIGURATION		
Size	Bank 0	Bank 1
2MB	(2) 256K x 36	NONE
4MB	(2) 256K x 36	(2) 256K x 36
4MB	(2) 512K x 36	NONE
6MB	(2) 256K x 36	(2) 512K x 36
6MB	(2) 512K x 36	(2) 256K x 36
8MB	(2) 512K x 36	(2) 512K x 36
8MB	(2) 1M x 36	NONE
10MB	(2) 256K x 36	(2) 1M x 36
10MB	(2) 1M x 36	(2) 256K x 36
12MB	(2) 512K x 36	(2) 1M x 36
12MB	(2) 1M x 36	(2) 512K x 36
16MB	(2) 1M x 36	(2) 1M x 36
16MB	(2) 2M x 36	NONE
18MB	(2) 256K x 36	(2) 2M x 36
18MB	(2) 2M x 36	(2) 256K x 36
20MB	(2) 512K x 36	(2) 2M x 36
20MB	(2) 2M x 36	(2) 512K x 36
24MB	(2) 1M x 36	(2) 2M x 36
24MB	(2) 2M x 36	(2) 1M x 36
32MB	(2) 2M x 36	(2) 2M x 36
32MB	(2) 4M x 36	NONE
34MB	(2) 256K x 36	(2) 4M x 36
34MB	(2) 4M x 36	(2) 256K x 36
36MB	(2) 512K x 36	(2) 4M x 36
36MB	(2) 4M x 36	(2) 512K x 36
40MB	(2) 1M x 36	(2) 4M x 36
40MB	(2) 4M x 36	(2) 1M x 36
48MB	(2) 2M x 36	(2) 4M x 36
48MB	(2) 4M x 36	(2) 2M x 36

Continued on next page...

PINE TECHNOLOGY

PT - 7 2 6

... continued from previous page

DRAM CONFIGURATION (CON'T)		
Size	Bank 0	Bank 1
64MB	(2) 4M x 36	(2) 4M x 36
64MB	(2) 8M x 36	NONE
66MB	(2) 256K x 36	(2) 8M x 36
66MB	(2) 8M x 36	(2) 256K x 36
68MB	(2) 512K x 36	(2) 8M x 36
68MB	(2) 8M x 36	(2) 512K x 36
72MB	(2) 1M x 36	(2) 8M x 36
72MB	(2) 8M x 36	(2) 1M x 36
80MB	(2) 2M x 36	(2) 8M x 36
80MB	(2) 8M x 36	(2) 2M x 36
96MB	(2) 4M x 36	(2) 8M x 36
96MB	(2) 8M x 36	(2) 4M x 36
128MB	(2) 8M x 36	(2) 8M x 36

CACHE CONFIGURATION	
Size	Bank 0
None	NONE
256KB	(8) 32K x 8

CACHE JUMPER CONFIGURATION		
Size	J71	J72
None	pins 1 & 2 closed	pins 1 & 2 closed
256KB	pins 1 & 2 closed	pins 2 & 3 closed

PCI IRQ CONFIGURATION						
IRQ	J110	J111	J112	J113	J114	J115
IRQ3	Open	Open	Open	Closed	Open	Open
IRQ5	Open	Open	Open	Open	Open	Closed
IRQ10	Closed	Open	Open	Open	Open	Open
IRQ11	Open	Closed	Open	Open	Open	Open
IRQ14	Open	Open	Closed	Open	Open	Open
IRQ15	Open	Open	Open	Open	Closed	Open