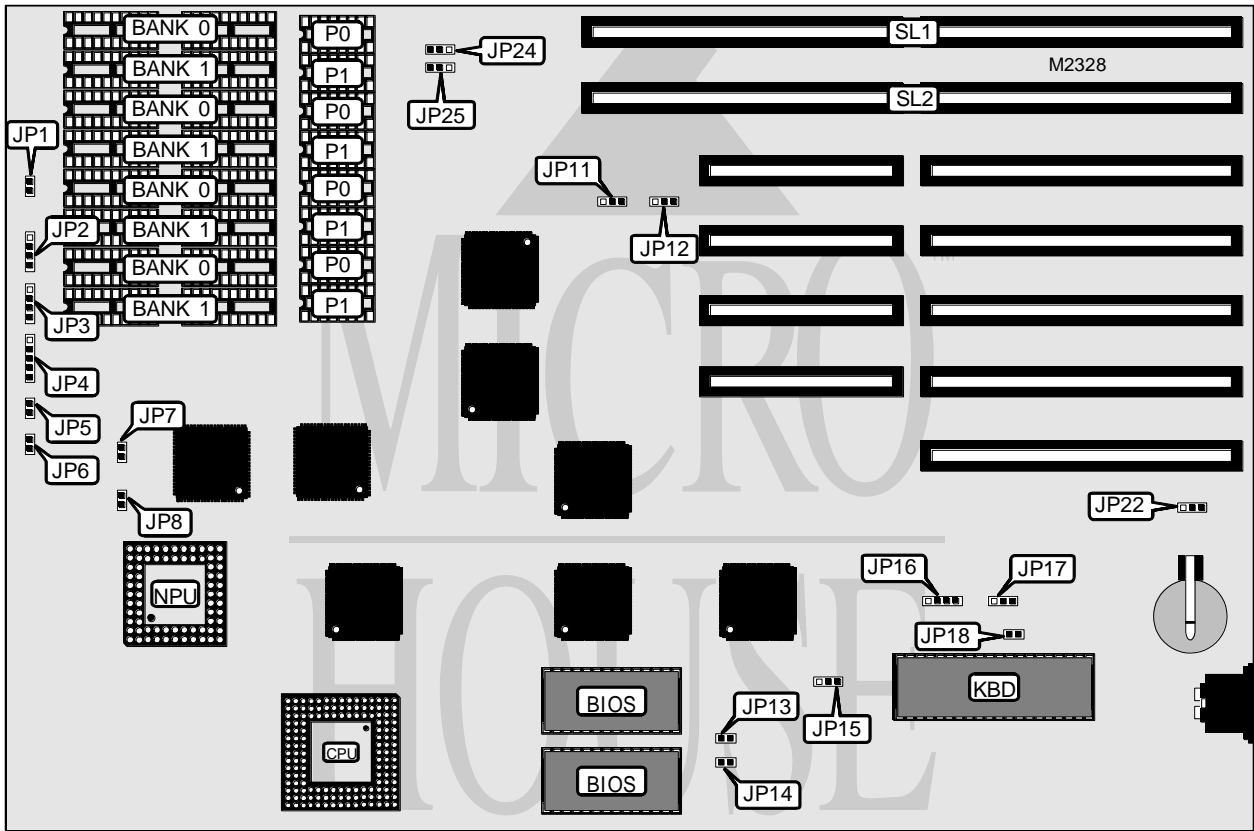


# AUVA COMPUTER, INC. BABY 80386 TAM/20-C3

<b>Processor</b>	80386DX
<b>Processor Speed</b>	20MHz
<b>Chip Set</b>	C&T
<b>Max. Onboard DRAM</b>	16MB (2MB on board)
<b>Cache</b>	None
<b>BIOS</b>	AMI
<b>Dimensions</b>	330mm x 218mm
<b>I/O Options</b>	32-bit external memory card (2)
<b>NPU Options</b>	80387SX



CONNECTIONS			
Purpose	Location	Purpose	Location
Reset switch	JP1	Turbo switch	JP5
Speaker	JP2	External battery	JP16
Turbo LED	JP3	32-bit external memory card	SL1 & SL2
Power LED & keylock	JP4		

Continued on next page. . .

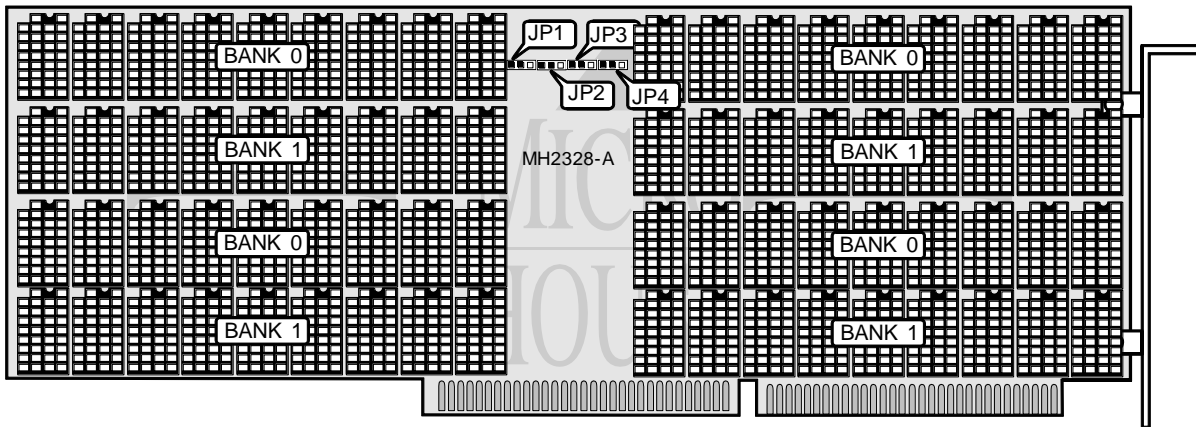
**AUVA COMPUTER, INC.**  
**BABY 80386 TAM/20-C3**

... continued from previous page

USER CONFIGURABLE SETTINGS		
Function	Jumper	Position
í Pipeline mode enabled	JP6	Closed
Pipeline mode disabled	JP6	Open
í BIOS type select 27256	JP15	pins 1 & 2 closed
BIOS type select 27512	JP15	pins 2 & 3 closed
í CMOS memory normal operation	JP17	pins 1 & 2 closed
CMOS memory clear	JP17	pins 2 & 3 closed
í Monitor type select color	JP18	Closed
Monitor type select monochrome	JP18	Open
í CMOS memory (Internal Battery)	JP22	pins 2 & 3 closed
CMOS memory (External Battery)	JP22	pins 1 & 2 closed

NPU CLOCK SPEED CONFIGURATION		
NPU Speed	JP7	JP8
Synchronous	Open	Open
Asynchronous	Closed	Closed

NPU TYPE CONFIGURATION		
Type	JP13	JP14
80387	Closed	Closed
None	Open	Open



Continued on next page...

# AUVA COMPUTER, INC.

## BABY 80386 TAM/20-C3

... continued from previous page

DRAM CONFIGURATION						
Size	Bank 0	Bank 1	Bank 0 (C1)	Bank 1 (C1)	Bank 0 (C2)	Bank 1 (C2)
1MB/1	(8) 411000	NONE	NONE	NONE	NONE	NONE
1MB/2	NONE	NONE	(18) 41256	NONE	NONE	NONE
2MB/1	(8) 411000	(8) 411000	NONE	NONE	NONE	NONE
2MB/2	NONE	NONE	(18) 41256	(18) 41256	NONE	NONE
4MB/1	(8) 411000	(8) 411000	(18) 41256	(18) 41256	NONE	NONE
4MB/2	NONE	NONE	(18) 411000	NONE	NONE	NONE
4MB/3	NONE	NONE	(18) 41256	(18) 41256	(18) 41256	(18) 41256
8MB	NONE	NONE	(18) 411000	(18) 411000	NONE	NONE
10MB	(8) 411000	(8) 411000	(18) 411000	(18) 411000	NONE	NONE
16MB	NONE	NONE	(18) 411000	(18) 411000	(18) 411000	(18) 411000

DRAM SWITCH CONFIGURATION (MAINBOARD)				
Size	JP11	JP12	JP24	JP25
1MB/1	Open	pins 1 & 2 closed	pins 1 & 2 closed	Open
1MB/2	Open	Open	Open	Open
2MB/1	pins 1 & 2 closed	pins 1 & 2 closed	pins 1 & 2 closed	pins 1 & 2 closed
2MB/2	Open	Open	Open	Open
4MB/1	pins 1 & 2 closed	pins 1 & 2 closed	pins 1 & 2 closed	pins 1 & 2 closed
4MB/2	Open	Open	Open	Open
4MB/3	Open	Open	Open	Open
8MB	Open	Open	Open	Open
10MB	pins 2 & 3 closed	pins 2 & 3 closed	pins 2 & 3 closed	pins 2 & 3 closed
16MB	Open	Open	Open	Open

DRAM SWITCH CONFIGURATION (EMC/8M-C3) (Card 1)				
Size	JP1	JP2	JP3	JP4
1MB/1	N/A	N/A	N/A	N/A
1MB/2	Open	pins 1 & 2 closed	Open	pins 1 & 2 closed
2MB/1	N/A	N/A	N/A	N/A
2MB/2	pins 1 & 2 closed	pins 1 & 2 closed	pins 1 & 2 closed	pins 1 & 2 closed
4MB/1	pins 2 & 3 closed	pins 2 & 3 closed	pins 2 & 3 closed	pins 2 & 3 closed
4MB/2	Open	pins 1 & 2 closed	Open	pins 1 & 2 closed
4MB/3	pins 2 & 3 closed	pins 2 & 3 closed	pins 2 & 3 closed	pins 2 & 3 closed
8MB	pins 1 & 2 closed	pins 1 & 2 closed	pins 1 & 2 closed	pins 1 & 2 closed
10MB	pins 1 & 2 closed	pins 1 & 2 closed	pins 1 & 2 closed	pins 1 & 2 closed
16MB	pins 2 & 3 closed	pins 2 & 3 closed	pins 2 & 3 closed	pins 2 & 3 closed

Continued on next page. . .

**AUVA COMPUTER, INC.**  
**BABY 80386 TAM/20-C3**

... continued from previous page

DRAM SWITCH CONFIGURATION (EMC/8M-C3) (Card 2)				
Size	JP1	JP2	JP3	JP4
1MB/1	N/A	N/A	N/A	N/A
1MB/2	N/A	N/A	N/A	N/A
2MB/1	N/A	N/A	N/A	N/A
2MB/2	N/A	N/A	N/A	N/A
4MB/1	N/A	N/A	N/A	N/A
4MB/2	N/A	N/A	N/A	N/A
4MB/3	pins 1 & 2 closed	pins 1 & 2 closed	pins 1 & 2 closed	pins 1 & 2 closed
8MB	N/A	N/A	N/A	N/A
10MB	N/A	N/A	N/A	N/A
16MB	pins 1 & 2 closed	pins 1 & 2 closed	pins 1 & 2 closed	pins 1 & 2 closed

PARITY CHECK CONFIGURATION (MAINBOARD ONLY)		
Size	P0	P1
1MB/1	(4) 41256	NONE
2MB/1	(4) 41256	(4) 41256
4MB/1	(4) 41256	(4) 41256
10MB	(4) 41256	(4) 41256

**MISCELLANEOUS TECHNICAL NOTE**

Note: NMB (AAA2801-8), Micron (MT1259-10), and Hyundai (HY53C256LS) DRAM are inhibited on the EMC/8M-C3 RAM card.