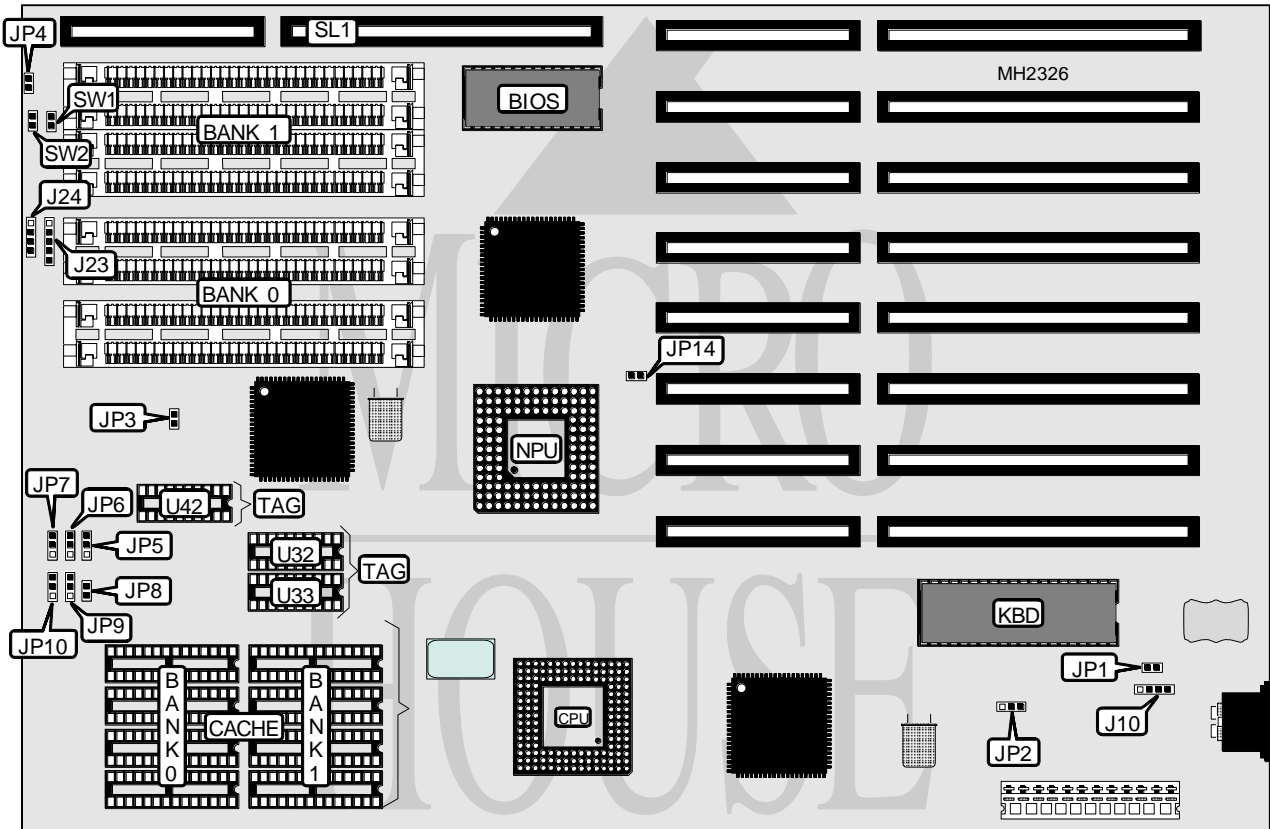


UNIDENTIFIED OPTI-386WB

Processor	80386DX
Processor Speed	33/40MHz
Chip Set	OPTI
Max. Onboard DRAM	40MB (8MB on external memory card)
Cache	32/64/128/256KB
BIOS	AMI
Dimensions	330mm x 218mm
I/O Options	32-bit external memory card
NPU Options	80387DX/3167



CONNECTIONS			
Purpose	Location	Purpose	Location
External battery	J10	32-bit external memory card	SL1
Power LED & keylock	J23	Reset switch	SW1
Speaker	J24	Turbo switch	SW2
Turbo LED	JP4		

Continued on next page. . .

UNIDENTIFIED

OPTI-386WB

... continued from previous page

USER CONFIGURABLE SETTINGS

Function	Jumper	Position
í Monitor type select monochrome	JP1	Open
Monitor type select color	JP1	Closed
í CMOS memory normal operation	JP2	pins 2 & 3 closed
CMOS memory clear	JP2	pins 1 & 2 closed
í I/O bus speed select ATCLK/6	JP3	Open
I/O bus speed select ATCLK/8	JP3	Closed
í NPU synchronous with CPU	JP14	Open
NPU asynchronous with CPU	JP14	Closed

DRAM CONFIGURATION

Size	Bank 0	Bank 1
1MB	(4) 256K x 9	NONE
2MB	(4) 256K x 9	(4) 256K x 9
4MB	(4) 1M x 9	NONE
5MB	(4) 256K x 9	(4) 1M x 9
8MB	(4) 1M x 9	(4) 1M x 9
16MB	(4) 4M x 9	NONE
20MB	(4) 1M x 9	(4) 4M x 9
20MB	(4) 4M x 9	(4) 1M x 9
32MB	(4) 4M x 9	(4) 4M x 9

CACHE CONFIGURATION

Size	Bank 0	Bank 1
32KB	(4) 8K x 8	NONE
64KB	(4) 8K x 8	(4) 8K x 8
128KB	(4) 32K x 8	NONE
256KB	(4) 32K x 8	(4) 32K x 8

CACHE TAG CONFIGURATION

Size	TAG (U32)	TAG (U33)	TAG (U42)
32KB	(1) 16K x 4	(1) 16K x 4	(1) 16K x 4
64KB	(1) 16K x 4	(1) 16K x 4	(1) 16K x 4
128KB	(1) 16K x 4	(1) 16K x 4	(1) 16K x 4
256KB	(1) 16K x 4	(1) 16K x 4	(1) 16K x 4

CACHE JUMPER CONFIGURATION

Size	JP5	JP6	JP7	JP8	JP9	JP10
32KB	1 & 2	1 & 2	1 & 2	Open	2 & 3	2 & 3
64KB	2 & 3	1 & 2	1 & 2	Open	2 & 3	1 & 2
128KB	2 & 3	1 & 2	2 & 3	Closed	2 & 3	1 & 2
256KB	2 & 3	2 & 3	2 & 3	Closed	1 & 2	1 & 2

Note: Pins designated should be in the closed position.