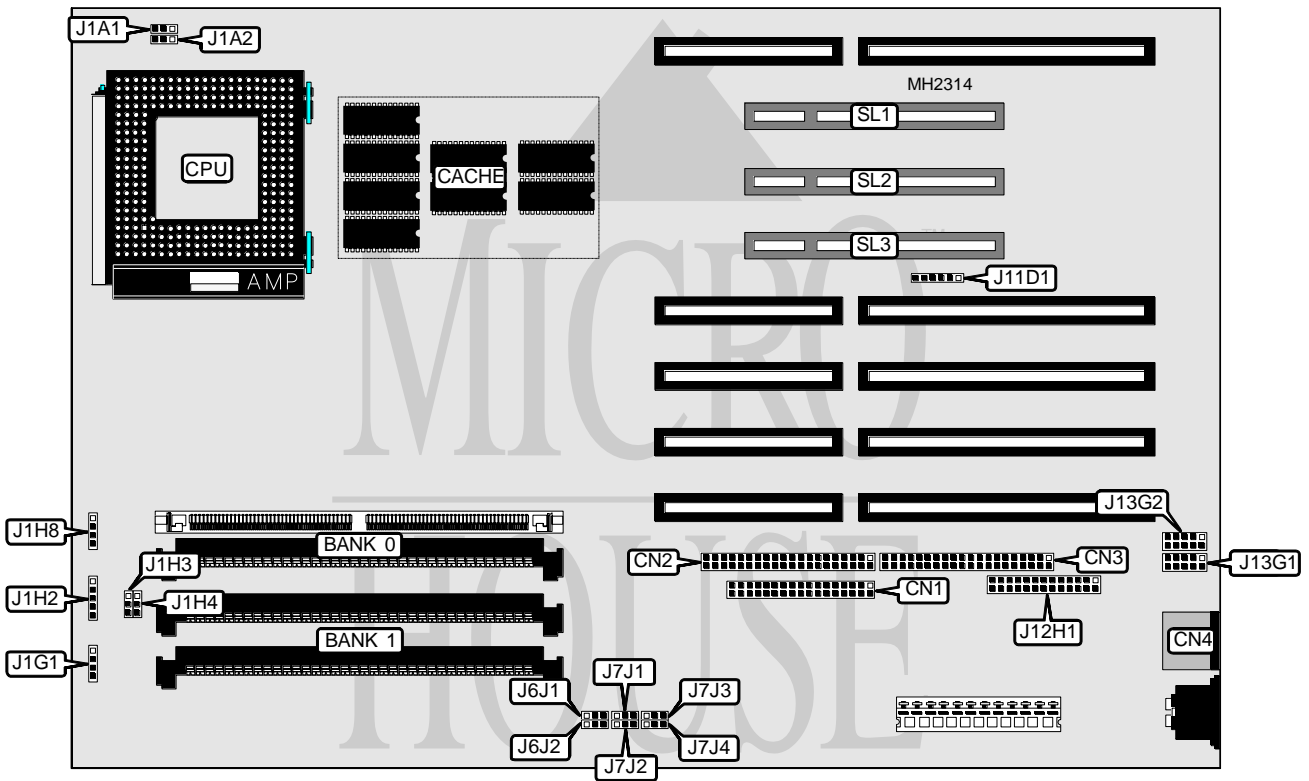


INTEL CORPORATION PENTIUM 90MHZ

Processor	Pentium
Processor Speed	90MHz
Chip Set	Intel
Max. Onboard DRAM	128MB
Cache	256KB
BIOS	AMI
Dimensions	330mm x 218mm
I/O Options	32-bit PCI bus slots (3), floppy drive interface, IDE interfaces (2), parallel port, serial ports (2)
NPU Options	None



CONNECTIONS			
Purpose	Location	Purpose	Location
Floppy drive interface	CN1	IDE interface LED	J1H8
IDE interface (ISA bus)	CN2	Speaker	J1G1
IDE interface (PCI bus)	CN3	Optional power connector (3.3v)	J11D1
PS/2 mouse port	CN4	Parallel port	J12H1
Chassis fan power	J1A1	Serial port 1	J13G1
Chassis fan power	J1A2	Serial port 2	J13G2
Power LED & keylock	J1H2	32-bit PCI bus slots	SL1 - SL3

Continued on next page . . .

INTEL CORPORATION PENTIUM 90MHZ

... continued from previous page.

USER CONFIGURABLE SETTINGS		
Function	Jumper	Position
í Factory configured - do not alter	J1H3	pins 2 & 3 closed
í Factory configured - do not alter	J1H4	Open
í CMOS memory normal operation	J6J1	pins 1 & 2 closed
CMOS memory clear	J6J1	pins 2 & 3 closed
í Flash BIOS update enabled	J6J2	pins 1 & 2 closed
Flash BIOS update disabled	J6J2	pins 2 & 3 closed
í BIOS setup enabled	J7J1	pins 1 & 2 closed
BIOS setup disabled	J7J1	pins 2 & 3 closed
í Flash normal mode at boot	J7J2	pins 1 & 2 closed
Flash recovery mode at boot	J7J2	pins 2 & 3 closed
í Monitor type select color	J7J3	pins 2 & 3 closed
Monitor type select monochrome	J7J3	pins 1 & 2 closed
í Password disabled	J7J4	pins 1 & 2 closed
Password enabled	J7J4	pins 2 & 3 closed

DRAM CONFIGURATION		
Size	Bank 0	Bank 1
2MB	(2) 256K x 36	NONE
4MB	(2) 256K x 36	(2) 256K x 36
4MB	(2) 512K x 36	NONE
6MB	(2) 256K x 36	(2) 512K x 36
6MB	(2) 512K x 36	(2) 256K x 36
8MB	(2) 512K x 36	(2) 512K x 36
8MB	(2) 1M x 36	NONE
10MB	(2) 1M x 36	(2) 256K x 36
10MB	(2) 256K x 36	(2) 1M x 36
12MB	(2) 1M x 36	(2) 512K x 36
12MB	(2) 512K x 36	(2) 1M x 36
16MB	(2) 1M x 36	(2) 1M x 36
16MB	(2) 2M x 36	NONE
18MB	(2) 2M x 36	(2) 256K x 36
18MB	(2) 256K x 36	(2) 2M x 36
20MB	(2) 2M x 36	(2) 512K x 36
20MB	(2) 512K x 36	(2) 2M x 36
24MB	(2) 2M x 36	(2) 1M x 36
24MB	(2) 1M x 36	(2) 2M x 36
32MB	(2) 2M x 36	(2) 2M x 36
32MB	(2) 4M x 36	NONE
34MB	(2) 4M x 36	(2) 256K x 36
34MB	(2) 256K x 36	(2) 4M x 36
36MB	(2) 4M x 36	(2) 512K x 36
36MB	(2) 512K x 36	(2) 4M x 36
40MB	(2) 4M x 36	(2) 1M x 36

Continued on next page ...

INTEL CORPORATION

PENTIUM 90MHZ

... continued from previous page.

DRAM CONFIGURATION (CON'T)		
Size	Bank 0	Bank 1
40MB	(2) 1M x 36	(2) 4M x 36
48MB	(2) 4M x 36	(2) 2M x 36
48MB	(2) 2M x 36	(2) 4M x 36
64MB	(2) 4M x 36	(2) 4M x 36
64MB	(2) 8M x 36	NONE
66MB	(2) 8M x 36	(2) 256K x 36
66MB	(2) 256K x 36	(2) 8M x 36
68MB	(2) 8M x 36	(2) 512K x 36
68MB	(2) 512K x 36	(2) 8M x 36
72MB	(2) 8M x 36	(2) 1M x 36
72MB	(2) 1M x 36	(2) 8M x 36
80MB	(2) 8M x 36	(2) 2M x 36
80MB	(2) 2M x 36	(2) 8M x 36
96MB	(2) 8M x 36	(2) 4M x 36
96MB	(2) 4M x 36	(2) 8M x 36
128MB	(2) 8M x 36	(2) 8M x 36

CACHE CONFIGURATION	
Size	Bank 0
256KB	(8) 32K x 8
Note: Cache is factory installed at is not configurable.	