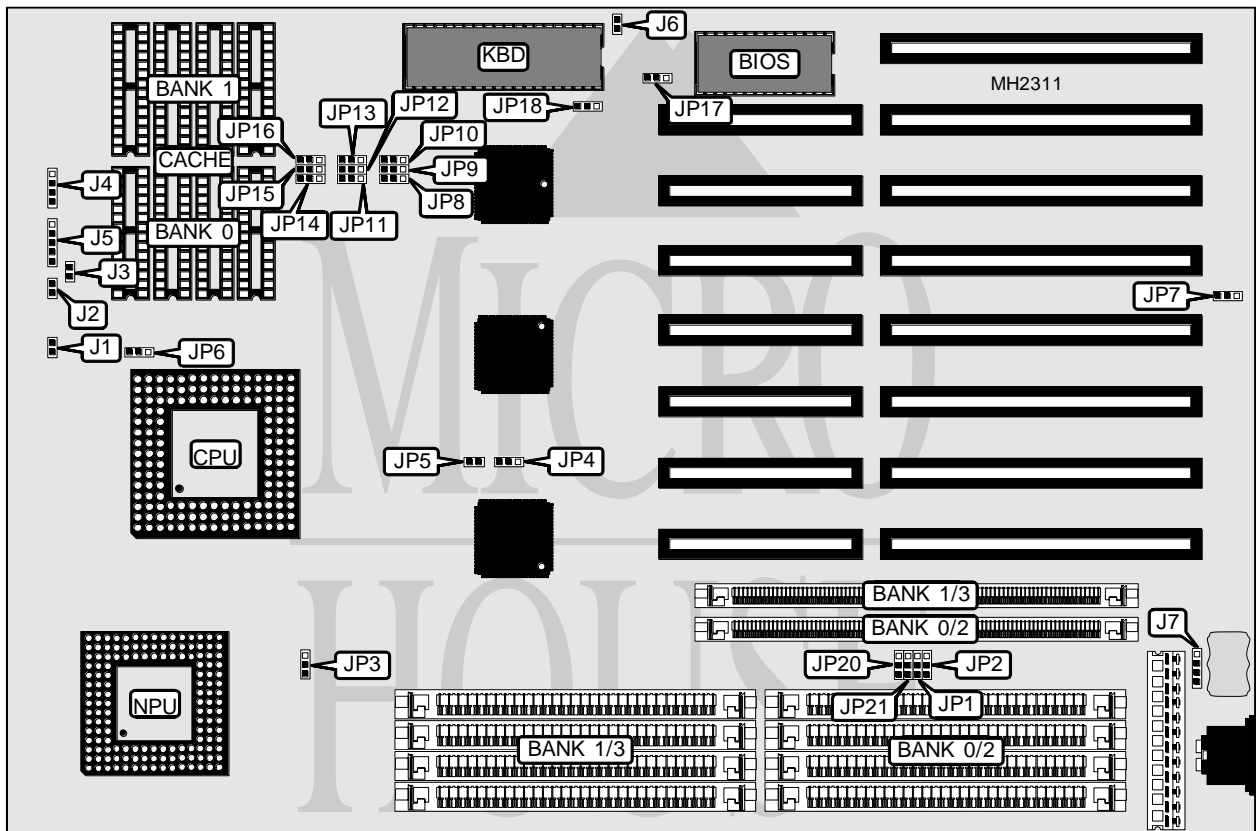


CHAINTECH COMPUTER COMPANY, LTD.

416SX/420SX/425SX/433SC/450SC

Processor	80486SX/80487SX/80486DX/ODP486SX/80486DX2
Processor Speed	16/20/25/33/50(internal)/50/66(internal)MHz
Chip Set	SIS
Max. Onboard DRAM	64MB
Cache	32/64/128/256KB
BIOS	AMI
Dimensions	330mm x 218mm
I/O Options	None
NPU Options	4167



CONNECTIONS			
Purpose	Location	Purpose	Location
Reset switch	J1	Speaker	J4
Turbo switch	J2	Power LED & keylock	J5
Turbo LED	J3	External battery	J7

Continued on next page. . .

CHAINTECH COMPUTER CO. LTD.

416SX/420SX/425SX/433SC/450SC

... continued from previous page

USER CONFIGURABLE SETTINGS		
Function	Jumper	Position
í Turbo enabled	J2	Closed
Turbo disabled	J2	Open
í Monitor type select monochrome	J6	Open
Monitor type select color	J6	Closed
í Factory configured - do not alter	JP7	Open
í CMOS memory normal operation	JP17	pins 1 & 2 closed
CMOS memory clear	JP17	pins 2 & 3 closed
í Factory configured - do not alter	JP18	Open

DRAM CONFIGURATION				
Size	Bank 0	Bank 1	Bank 2	Bank 3
1MB	(4) 256K x 9	NONE	NONE	NONE
1MB	(1) 256K x 36	NONE	NONE	NONE
2MB	(4) 256K x 9	(4) 256K x 9	NONE	NONE
2MB	(1) 256K x 36	(1) 256K x 36	NONE	NONE
4MB	(4) 1M x 9	NONE	NONE	NONE
4MB	(1) 1M x 36	NONE	NONE	NONE
6MB	(4) 256K x 9	(4) 256K x 9	(1) 1M x 36	NONE
8MB	(4) 1M x 9	(4) 1M x 9	NONE	NONE
8MB	(1) 1M x 36	(1) 1M x 36	NONE	NONE
10MB	(4) 256K x 9	(4) 256K x 9	(1) 1M x 36	(1) 1M x 36
12MB	(4) 1M x 9	(4) 1M x 9	(1) 1M x 36	NONE
16MB	(1) 1M x 36	(1) 1M x 36	(4) 1M x 9	(4) 1M x 9
16MB	(4) 1M x 9	(4) 1M x 9	(1) 1M x 36	(1) 1M x 36
16MB	(1) 4M x 36	NONE	NONE	NONE
16MB	(4) 4M x 9	NONE	NONE	NONE
18MB	(4) 256K x 9	(4) 256K x 9	(1) 4M x 36	NONE
20MB	(4) 1M x 9	(4) 4M x 9	NONE	NONE
20MB	(1) 1M x 36	(1) 4M x 36	NONE	NONE
24MB	(4) 1M x 9	(4) 1M x 9	(1) 4M x 36	NONE
24MB	(1) 4M x 36	(1) 1M x 36	(4) 1M x 9	NONE
32MB	(1) 4M x 36	(1) 4M x 36	NONE	NONE
32MB	(4) 4M x 9	(4) 4M x 9	NONE	NONE
36MB	(1) 1M x 36	(4) 4M x 9	(4) 4M x 9	NONE
36MB	(4) 4M x 9	(4) 4M x 9	(1) 1M x 36	NONE
36MB	(1) 4M x 36	(1) 4M x 36	(4) 1M x 9	NONE
40MB	(1) 1M x 36	(1) 1M x 36	(4) 4M x 9	(4) 4M x 9
40MB	(4) 4M x 9	(4) 4M x 9	(1) 1M x 36	(1) 1M x 36
40MB	(1) 4M x 36	(1) 4M x 36	(4) 1M x 9	(4) 1M x 9
40MB	(4) 1M x 9	(4) 1M x 9	(1) 4M x 36	(1) 4M x 36
48MB	(4) 4M x 9	(4) 4M x 9	(1) 4M x 36	NONE
48MB	(1) 4M x 36	(1) 4M x 36	(4) 4M x 9	NONE
64MB	(4) 4M x 9	(4) 4M x 9	(1) 4M x 36	(1) 4M x 36
64MB	(1) 4M x 36	(1) 4M x 36	(4) 4M x 9	(4) 4M x 9

Continued on next page. . .

CHAINTECH COMPUTER CO. LTD.

416SX/420SX/425SX/433SC/450SC

... continued from previous page

DRAM JUMPER CONFIGURATION				
Type	JP1	JP2	JP20	JP21
Option 1	pins 1 & 2 closed	pins 1 & 2 closed	pins 1 & 2 closed	pins 1 & 2 closed
Option 2	pins 2 & 3 closed	pins 2 & 3 closed	pins 2 & 3 closed	pins 2 & 3 closed

Note: Option 1- Banks 0 & 1 use x 9 SIMMS and Banks 2 & 3 use X 36 SIMMS.
Option 2- Banks 0 & 1 use x 36 SIMMS and Banks 2 & 3 use X 9 SIMMS.

CACHE CONFIGURATION		
Size	Bank 0	Bank 1
32KB	(4) 8K x 8	NONE
64KB	(4) 8K x 8	(4) 8K x 8
128KB	(4) 32K x 8	NONE
256KB	(4) 32K x 8	(4) 32K x 8

CACHE JUMPER CONFIGURATION				
Size	JP8	JP9	JP10	JP11
32KB	pins 1 & 2 closed	pins 1 & 2 closed	pins 1 & 2 closed	pins 1 & 2 closed
64KB	pins 2 & 3 closed	pins 1 & 2 closed	pins 1 & 2 closed	pins 2 & 3 closed
128KB	pins 2 & 3 closed	pins 2 & 3 closed	pins 1 & 2 closed	pins 2 & 3 closed
256KB	pins 2 & 3 closed	pins 2 & 3 closed	pins 2 & 3 closed	pins 2 & 3 closed

CACHE JUMPER CONFIGURATION (CON'T)					
Size	JP12	JP13	JP14	JP15	JP16
32KB	1 & 2	1 & 2	1 & 2	1 & 2	1 & 2
64KB	1 & 2	1 & 2	2 & 3	2 & 3	1 & 2
128KB	2 & 3	1 & 2	1 & 2	1 & 2	2 & 3
256KB	2 & 3	2 & 3	2 & 3	2 & 3	2 & 3

Note: Pins designated should be in the closed position.

CPU TYPE CONFIGURATION			
Type	JP4	JP5	JP6
80486SX	pins 2 & 3 closed	Open	Open
ODP486SX	pins 1 & 2 closed	Closed	pins 2 & 3 closed
80487SX	pins 1 & 2 closed	Closed	pins 2 & 3 closed
80486DX	pins 1 & 2 closed	Closed	pins 1 & 2 closed
80486DX2	pins 1 & 2 closed	Closed	pins 1 & 2 closed

CPU SPEED CONFIGURATION	
Speed	JP3
16MHz	pins 2 & 3 closed
20MHz	pins 2 & 3 closed
> 25MHz	pins 1 & 2 closed

MISCELLANEOUS TECHNICAL NOTE
Note: Depending on board version, cache and accompanying jumpers may not be present.