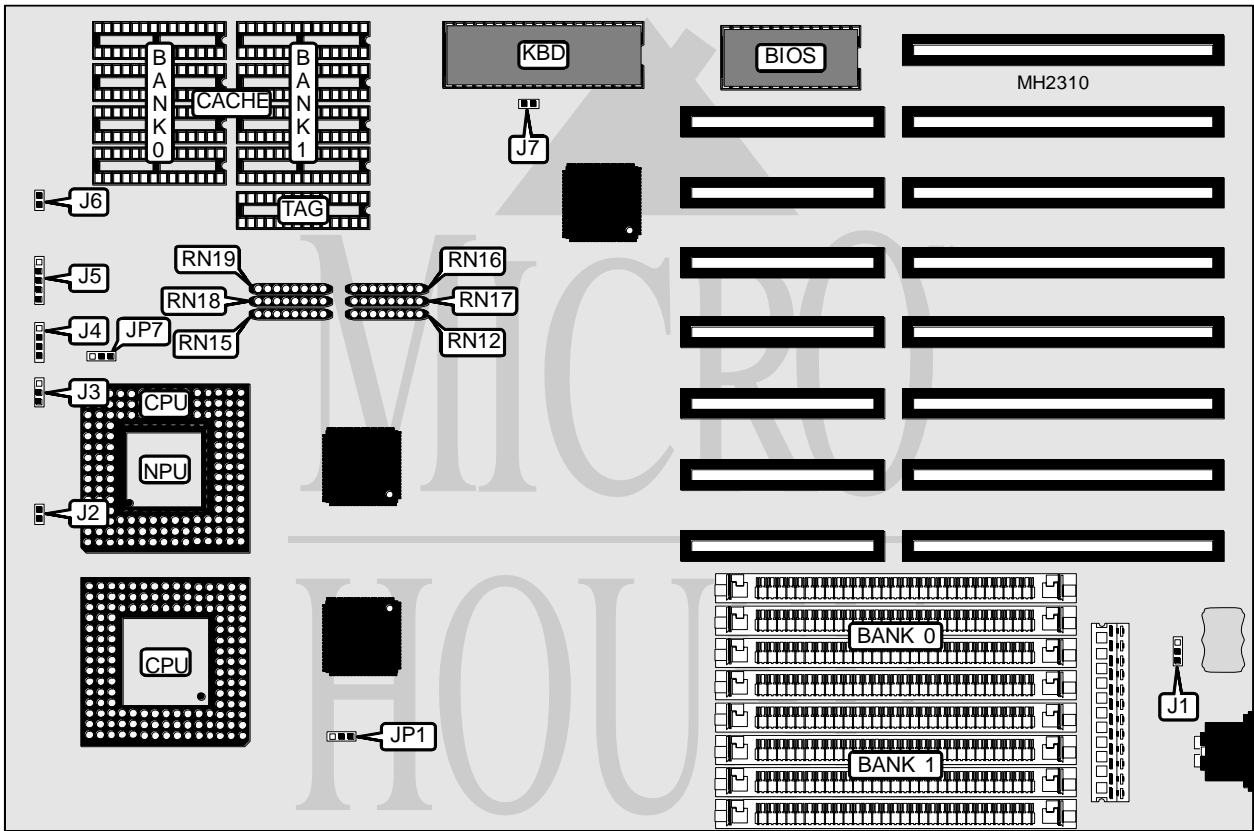


# CHAINTECH COMPUTER COMPANY, LTD.

## 420SXB/425SXB/433SCB/450SCB

**Processor** 80486SX/80487SX/80486DX/ODP486SX/80486DX2  
**Processor Speed** 16/20/25/33/50(internal)/50/66(internal)MHz  
**Chip Set** SIS  
**Max. Onboard DRAM** 32MB  
**Cache** 64/128/256KB  
**BIOS** AMI  
**Dimensions** 330mm x 218mm  
**I/O Options** None  
**NPU Options** 4167



CONNECTIONS			
Purpose	Location	Purpose	Location
External battery	J1	Speaker	J4
Turbo LED	J2	Power LED & keylock	J5
Turbo switch	J3	Reset switch	J6

Continued on next page. . .

**CHAINTECH COMPUTER CO. LTD.**  
**420SXB/425SXB/433SCB/450SCB**

... continued from previous page

USER CONFIGURABLE SETTINGS		
Function	Jumper	Position
í Turbo enabled	J3	Closed
Turbo disabled	J3	Open
í Monitor type select monochrome	J7	Open
Monitor type select color	J7	Closed

DRAM CONFIGURATION		
Size	Bank 0	Bank 1
1MB	(4) 256K x 9	NONE
2MB	(4) 256K x 9	(4) 256K x 9
4MB	(4) 1M x 9	NONE
8MB	(4) 1M x 9	(4) 1M x 9
16MB	(4) 4M x 9	NONE
20MB	(4) 1M x 9	(4) 4M x 9
32MB	(4) 4M x 9	(4) 4M x 9

CACHE CONFIGURATION			
Size	Bank 0	Bank 1	TAG
64KB	(4) 8K x 8	(4) 8K x 8	(1) 8K x 8
128KB	(4) 32K x 8	NONE	(1) 8K x 8
256KB	(4) 32K x 8	(4) 32K x 8	(1) 32K x 8

CACHE JUMPER CONFIGURATION						
Size	RN12	RN15	RN16	RN17	RN18	RN19
64KB	Installed	Installed	Not installed	Not installed	Not installed	Not installed
128KB	Not installed	Not installed	Not installed	Installed	Installed	Not installed
256KB	Not installed	Not installed	Installed	Not installed	Not installed	Installed

CPU TYPE CONFIGURATION	
Type	JP7
80486SX	pins 2 & 3 closed
ODP486SX	pins 2 & 3 closed
80487SX	pins 2 & 3 closed
80486DX	pins 1 & 2 closed
80486DX2	pins 1 & 2 closed

CPU SPEED CONFIGURATION	
Speed	JP1
16MHz	pins 2 & 3 closed
20MHz	pins 2 & 3 closed
> 25MHz	pins 1 & 2 closed

**MISCELLANEOUS TECHNICAL NOTE**  
 Note: If a Weitek coprocessor is desired, the optional daughter board must be installed in CPU socket.