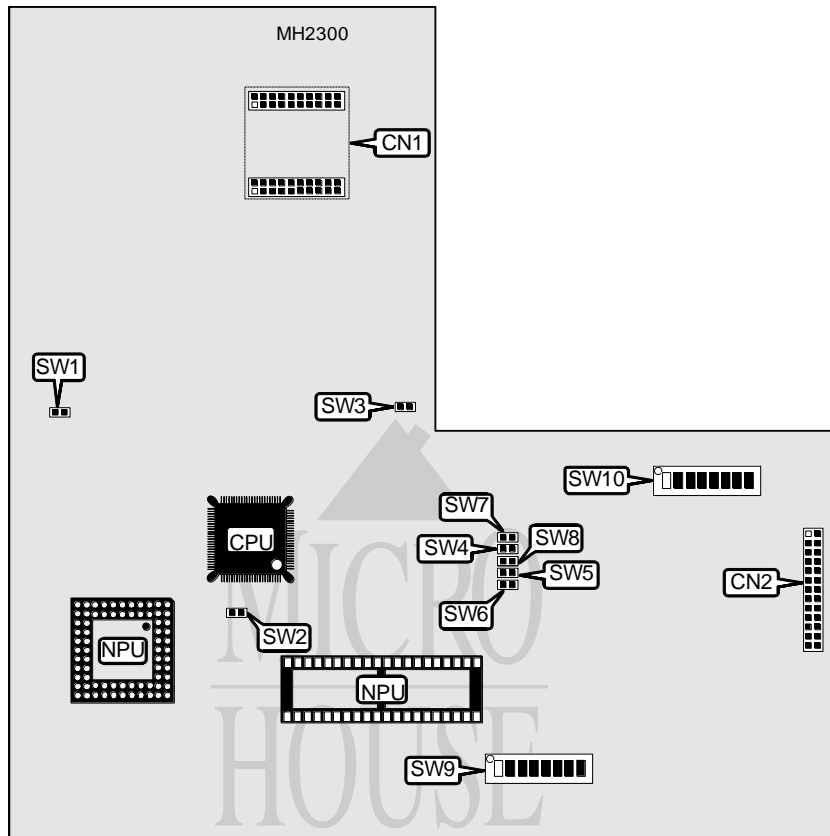


# APRICOT COMPUTERS LIMITED XEN-S VENUS I MOTHERBOARD

<b>Processor</b>	80286/80386SX
<b>Processor Speed</b>	12/16/20MHz
<b>Chip Set</b>	Unidentified
<b>Max. Onboard DRAM</b>	5MB (with external memory upgrade)
<b>Cache</b>	None
<b>BIOS</b>	Unidentified
<b>Dimensions</b>	220mm x 220mm
<b>I/O Options</b>	Floppy drive interface, IDE interface, parallel port, serial ports (2), VGA feature connector ethernet connector (exact locations unknown)
<b>NPU Options</b>	80287/80387SX



CONNECTIONS			
Purpose	Location	Purpose	Location
Memory upgrade connector	CN1	VGA feature connector	CN2

Continued on next page. . .

# APRICOT COMPUTERS LIMITED

## XEN-S VENUS I MOTHERBOARD

... continued from previous page

USER CONFIGURABLE SETTINGS		
Function	Jumper/Switch	Position
í Factory configured - do not alter	SW8	Open
í Password enabled	SW9/1	On
Password disabled	SW9/1	Off
í COM1 enabled	SW9/2	On
COM1 disabled	SW9/2	Off
í Floppy drive interface enabled	SW9/3	On
Floppy drive interface disabled	SW9/3	Off
í IDE interface enabled	SW9/4	On
IDE interface disabled	SW9/4	Off
í COM2 enabled	SW9/5	On
COM2 disabled	SW9/5	Off
í Ethernet enabled	SW9/6	On
Ethernet enabled	SW9/6	Off
í Parallel port enabled	SW9/7	On
Parallel port disabled	SW9/7	Off
í Ethernet cable select BNC	SW10/1-8	On
Ethernet cable select D - shell	SW10/1-8	Off

DRAM CONFIGURATION		
Size	Bank 0	Module
1MB	1MB	NONE
2MB	1MB	1MB
3MB	1MB	2MB
5MB	1MB	4MB

Note: Bank 0 is factory installed and is not configurable. The location is unknown.

CPU TYPE CONFIGURATION		
Type	SW1	SW2
80286	Open	Closed
80386	Closed	Open

CPU SPEED CONFIGURATION		
Speed	SW4	SW7
12MHz	Closed	Closed
16MHz	Open	Closed
20MHz	Open	Open

VGA CONFIGURATION				
Setting	SW3	SW5	SW6	SW9/8
Enabled	Closed	Closed	Closed	On
Disabled	Open	Open	Open	Off