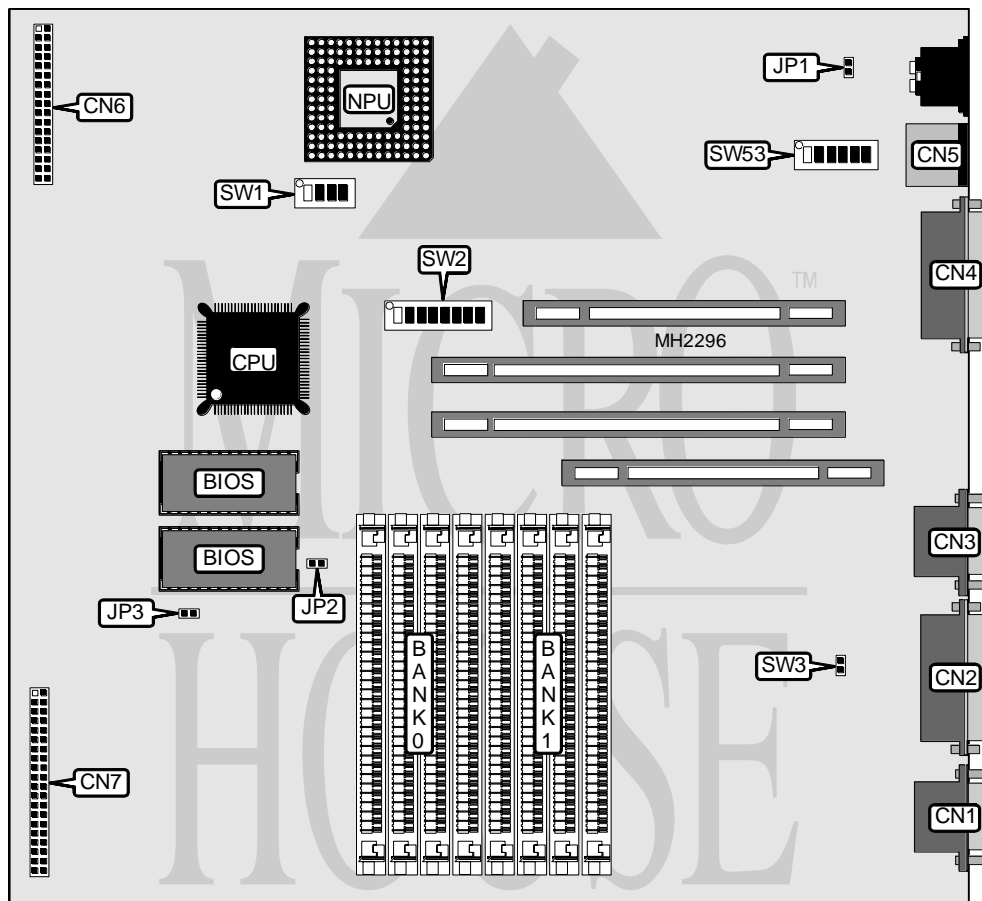


# APRICOT COMPUTERS LIMITED VXFT 386 MKI (TITAN MOTHERBOARD)

<b>Processor</b>	80386DX
<b>Processor Speed</b>	25MHz
<b>Chip Set</b>	Unidentified
<b>Max. Onboard DRAM</b>	16MB
<b>Cache</b>	None
<b>BIOS</b>	Unidentified
<b>Dimensions</b>	254mm x 220mm
<b>I/O Options</b>	Floppy drive interface, IDE interface, parallel port, PS/2 mouse port, serial port, VGA port, synchronous port
<b>NPU Options</b>	3167



CONNECTIONS			
Purpose	Location	Purpose	Location
Serial port	CN1	Floppy drive interface	CN6
Parallel port	CN2	IDE interface	CN7
VGA port	CN3	External battery	JP2
Synchronous port	CN4	Speaker	JP3
PS/2 mouse port	CN5		

Continued on next page. . .

# APRICOT COMPUTERS LIMITED

## VXFT 386 MKI (TITAN MOTHERBOARD)

... continued from previous page

USER CONFIGURABLE SETTINGS		
Function	Jumper/Switch	Position
í 386 pipeline mode enabled	SW1/1	On
386 pipeline mode disabled	SW1/1	Off
í 385 pipeline mode enabled	SW1/2	On
385 pipeline mode disabled	SW1/2	Off
í ROM disabled	SW1/3	On
ROM enabled	SW1/3	Off
í Refresh enabled	SW1/4	On
Refresh disabled	SW1/4	Off
í Factory configured - do not alter	SW2/6	On
í NPU disabled	SW2/7	Off
NPU enabled	SW2/7	On
í Factory configured - do not alter	SW2/8	On
í Factory configured - do not alter	SW3	Open
í Ethernet cable select BNC	SW53/1-6	On
Ethernet cable select D - shell	SW53/1-6	Off

DRAM CONFIGURATION		
Size	Bank 0	Bank 1
1MB	(4) 256K x 9	NONE
1MB	(4) 256K x 9	NONE
2MB	(4) 256K x 9	(4) 256K x 9
4MB	(4) 1M x 9	NONE
5MB	(4) 256K x 9	(4) 1M x 9
8MB	(4) 1M x 9	(4) 1M x 9
12MB	(4) 2M x 9	(4) 1M x 9
16MB	(4) 2M x 9	(4) 2M x 9

DRAM SWITCH CONFIGURATION			
Size	SW2/1	SW2/2	SW2/3
1MB	Off	Off	Off
1MB	On	Off	Off
2MB	Off	On	Off
4MB	Off	Off	On
5MB	On	On	Off
8MB	On	Off	On
12MB	Off	On	On
16MB	On	On	On

CPU SPEED CONFIGURATION		
Speed	SW2/4	SW2/5
25MHz	Off	On

**MICSELLANEOUS TECHINCAL NOTE**  
 Note: The purpose of JP1 is unidentified by the manufacturer.