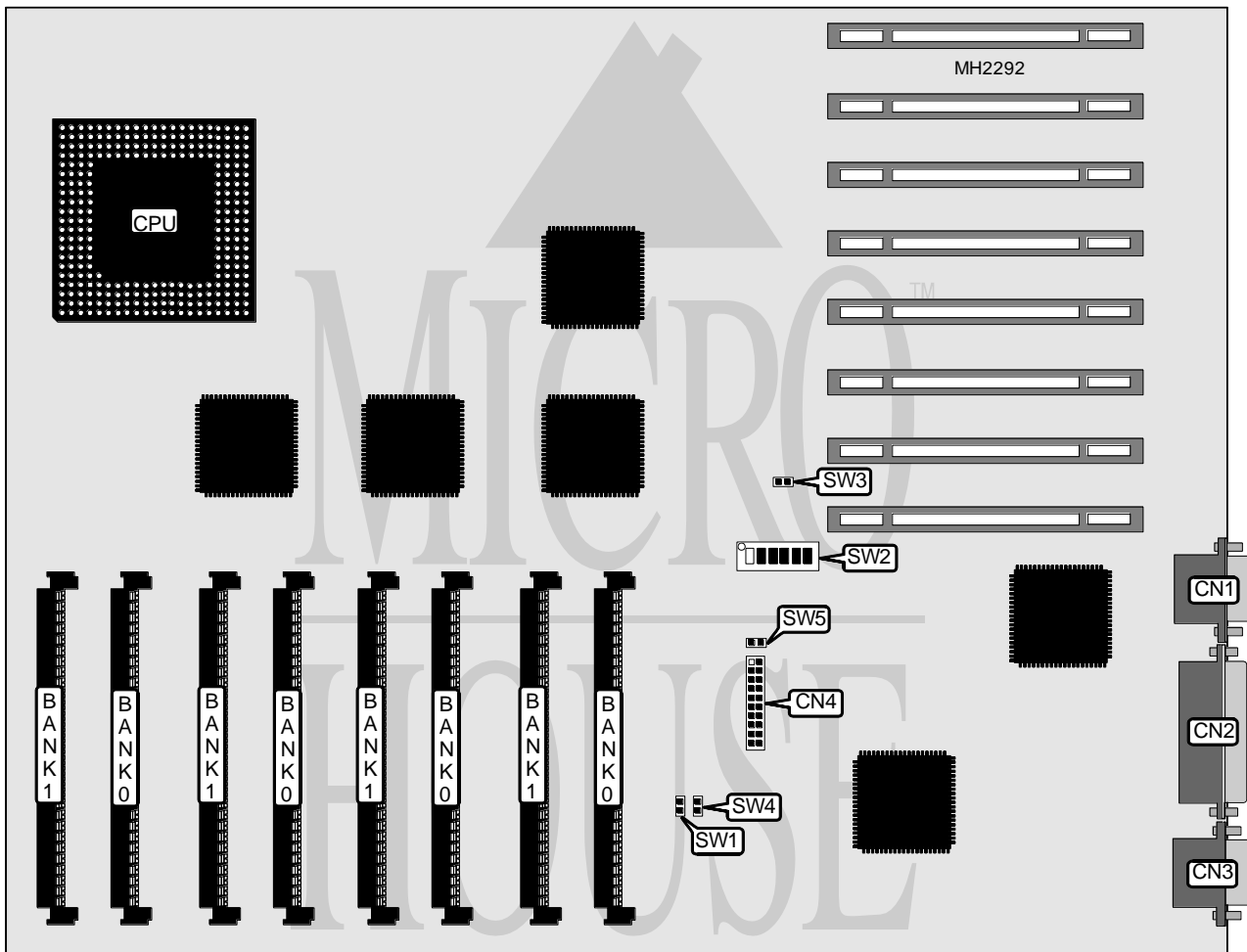


APRICOT COMPUTERS LIMITED FT//E (PENTIUM PANTHER II) MOTHERBOARD

Processor	Pentium
Processor Speed	60MHz
Chip Set	Unidentified
Max. Onboard DRAM	256MB
Cache	Unidentified
BIOS	Unidentified
Dimensions	330mm x 218mm
I/O Options	Parallel port, PS/2 mouse port, serial port, VGA port
NPU Options	None



CONNECTIONS			
Purpose	Location	Purpose	Location
VGA port	CN1	Serial port	CN3
Parallel port	CN2	Front panel connector	CN4
Note: The location of the PS/2 mouse port is unidentified.			

Continued on next page . . .

APRICOT COMPUTERS LIMITED

FT//E (PENTIUM PANTHER II) MOTHERBOARD

... continued from previous page

USER CONFIGURABLE SETTINGS		
Function	Jumper/Switch	Position
í 2 floppy drives installed	SW1	Open
1 floppy drive installed	SW1	Closed
í Cache enabled	SW2/1	On
Cache disabled	SW2/1	Off
í Flash BIOS write protect enabled	SW2/2	On
Flash BIOS write protect disabled	SW2/2	Off
í Factory configured - do not alter	SW2/3	On
í Factory configured - do not alter	SW2/4	On
í Factory configured - do not alter	SW2/5	On
í FT//e board used	SW2/6	On
FT//s board used	SW2/6	Off
í CMOS memory normal operation	SW3	Closed
CMOS memory clear	SW3	Open
í 2 IDE drives installed	SW4	Open
1 IDE drive installed	SW4	Closed
í Floppy drive type select 2MB	SW5	Open
Floppy drive type select 4MB	SW5	Closed

DRAM CONFIGURATION		
Size	Bank 0	Bank 1
16MB	(4) 1M x 36	NONE
32MB	(4) 1M x 36	(4) 1M x 36
32MB	(4) 2M x 36	NONE
48MB	(4) 2M x 36	(4) 1M x 36
64MB	(4) 2M x 36	(4) 2M x 36
64MB	(4) 4M x 36	NONE
80MB	(4) 4M x 36	(4) 1M x 36
96MB	(4) 4M x 36	(4) 2M x 36
128MB	(4) 4M x 36	(4) 4M x 36
128MB	(4) 8M x 36	NONE
144MB	(4) 8M x 36	(4) 1M x 36
160MB	(4) 8M x 36	(4) 2M x 36
192MB	(4) 8M x 36	(4) 4M x 36
256MB	(4) 8M x 36	(4) 8M x 36

CACHE CONFIGURATION

Note: The location, chip type and configuration of the cache is unidentified by the manufacturer.