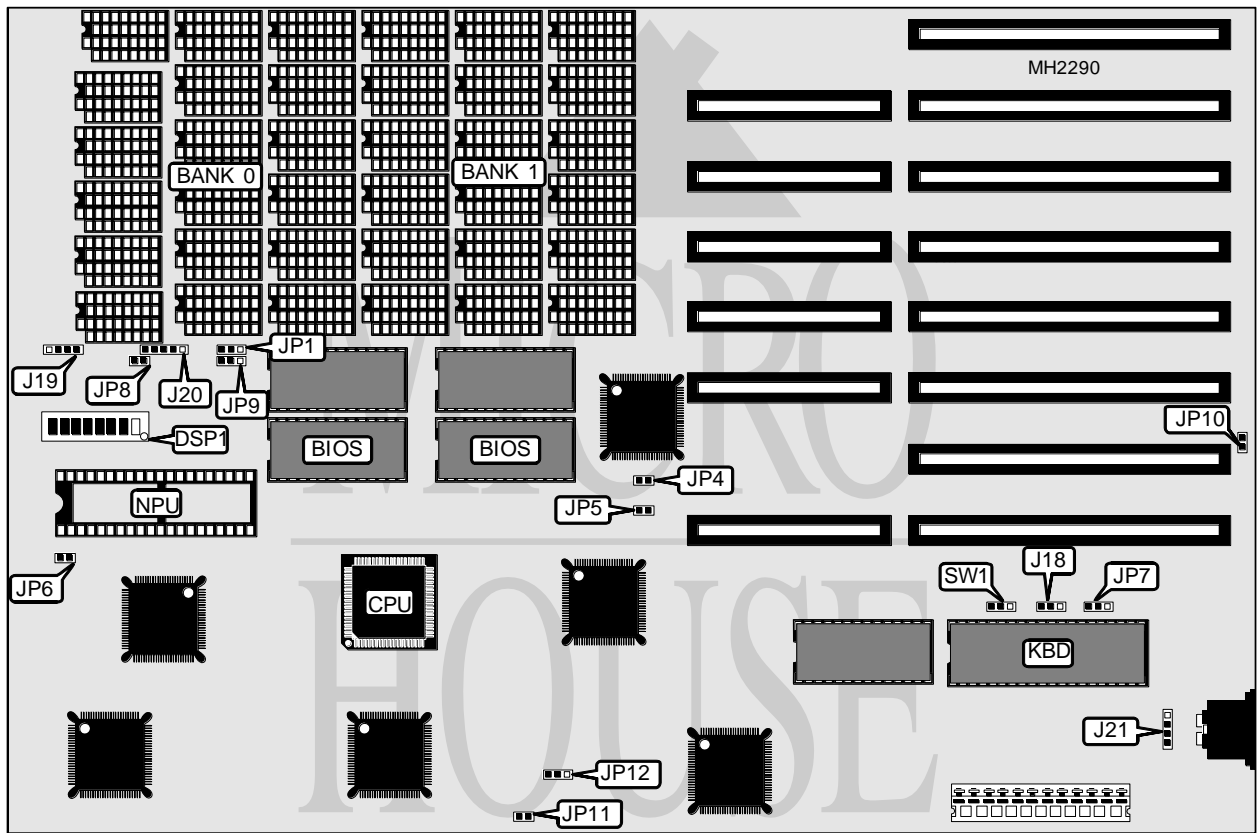


AUVA COMPUTER, INC. BABY 286 BAM/10-11

Processor	80286
Processor Speed	12MHz
Chip Set	Suntac
Max. Onboard DRAM	4MB
Cache	None
BIOS	Award/Phoenix
Dimensions	330mm x 220mm
I/O Options	None
NPU Options	80287



CONNECTIONS			
Purpose	Location	Purpose	Location
Speaker	J19	Turbo switch	JP4
Power LED & keylock	J20	Turbo LED	JP5
External battery	J21	Reset switch	JP6

Continued on next page. . .

AUVA COMPUTER, INC.
BABY 286 BAM/10-11

... continued from previous page

USER CONFIGURABLE SETTINGS		
Function	Jumper/Switch	Position
í CPU clock speed low	DSP1/1	On
CPU clock speed high	DSP1/1	Off
í Factory configured do not alter	DSP1/2	On
í I/O bus speed select 4 wait states	DSP1/3	On
I/O bus speed select 6 wait states	DSP1/3	Off
í EMS port address 0E8H	DSP1/4	On
EMS port address 098H	DSP1/4	Off
í RAM size select 256KB	J18	pins 1 & 2 closed
RAM size select 512KB	J18	pins 2 & 3 closed
í Factory configured do not alter	JP1	N/A
í Keyboard BIOS type select Phoenix	JP7	pins 1 & 2 closed
Keyboard BIOS type select Award	JP7	pins 2 & 3 closed
í DRAM mode select extended	JP8	Open
DRAM mode select expanded	JP8	Closed
í Battery type select internal	JP10	Closed
Battery type select external	JP10	Open
í Wait state select 0 wait state	JP11	Closed
Wait state select 1-wait state	JP11	Open
í Turbo enabled	JP12	pins 1 & 2 closed
Turbo disabled	JP12	pins 2 & 3 closed
í Monitor type select color	SW1	pins 2 & 3 closed
Monitor type select monochrome	SW1	pins 1 & 2 closed

DRAM CONFIGURATION					
Mode	Base	Extended	Expanded	Bank 0	Bank 1
0	512KB	0KB	0KB	(18) 41256	NONE
1	640KB	0KB	0KB	(18) 41256	(18) 4164
2	640KB	384KB	0KB	(18) 41256	(18) 41256
3	640KB	0KB	384KB	(18) 41256	(18) 41256
4	640KB	1408KB	0KB	(18) 411000	NONE
5	640KB	0KB	1408KB	(18) 411000	NONE
6	640KB	3456KB	0KB	(18) 411000	(18) 411000
7	640KB	0KB	3456KB	(18) 411000	(18) 411000

DRAM SWITCH CONFIGURATION			
Mode	DSP1/6	DSP1/7	DSP1/8
0	On	On	On
1	On	On	Off
2	On	Off	On
3	On	Off	Off
4	Off	On	On
5	Off	On	Off
6	Off	Off	On
7	Off	Off	Off

Continued on next page...

AUVA COMPUTER, INC.
BABY 286 BAM/10-11

... continued from previous page

BIOS TYPE SELECT		
Type	DSP1/5	JP9
27128	On	pins 1 & 2 closed
27256	Off	pins 2 & 3 closed