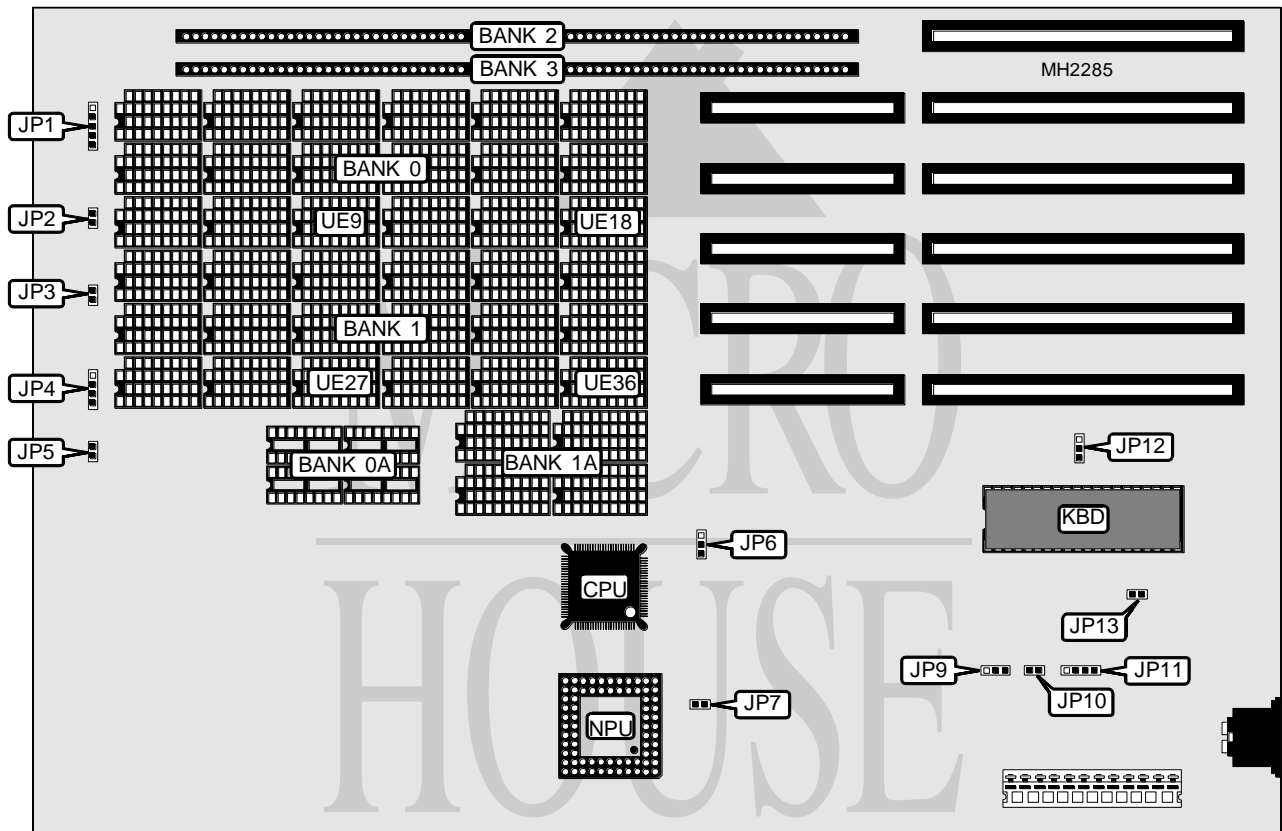


UNIDENTIFIED

NPM 16/20 C-1

Processor 80386SX
Processor Speed 16/20MHz
Chip Set C & T
Max. Onboard DRAM 8MB
Cache None
BIOS AMI/Phoenix
Dimensions 330mm x 218mm
I/O Options None
NPU Options 80387SX



CONNECTIONS			
Purpose	Location	Purpose	Location
Power LED & keylock	JP1	Speaker	JP4
Reset switch	JP2	Turbo switch	JP5
Turbo LED	JP3	External battery	JP11

Continued on next page. . .

UNIDENTIFIED

NPM 16/20 C-1

... continued from previous page

USER CONFIGURABLE SETTINGS		
Function	Jumper	Position
í Turbo enabled	JP5	Closed
Turbo disabled	JP5	Open
í BIOS type select 27256	JP6	pins 1 & 2 closed
BIOS type select 27128	JP6	pins 2 & 3 closed
í Pipeline mode enabled	JP7	Closed
Pipeline mode disabled	JP7	Open
í CMOS memory normal operation	JP9	pins 1 & 2 closed
CMOS memory clear	JP9	pins 2 & 3 closed
í Battery type select internal	JP10	Closed
Battery type select external	JP10	Open
í BIOS type select standard	JP12	pins 1 & 2 closed
BIOS type select custom	JP12	pins 2 & 3 closed
í Monitor type select monochrome	JP13	Open
Monitor type select color	JP13	Closed

DRAM CONFIGURATION						
Size	Bank 0	Bank 0A	Bank 1	Bank 1A	Bank 2	Bank 3
512KB	(18) 41256	NONE	NONE	NONE	NONE	NONE
512KB	NONE	(4) 44256	NONE	NONE	NONE	NONE
640KB	(18) 41256	NONE	NONE	(4) 4464	NONE	NONE
640KB	NONE	(4) 44256	NONE	(4) 4464	NONE	NONE
1MB	(18) 41256	NONE	(18) 41256	NONE	NONE	NONE
1.5MB	(18) 41256	NONE	(18) 41256	NONE	(2) 256K x 9	NONE
1.64MB	(18) 41256	NONE	(18) 4164	NONE	(2) 256K x 9	(2) 256K x 9
2MB	(18) 411000	NONE	NONE	NONE	NONE	NONE
2MB	(18) 41256	NONE	(18) 41256	NONE	(2) 256K x 9	(2) 256K x 9
3MB	(18) 41256	NONE	(18) 41256	NONE	(2) 1M x 9	(2) 1M x 9
4MB	(18) 411000	NONE	(18) 411000	NONE	NONE	NONE
4.64MB	(18) 41256	NONE	(18) 4164	NONE	(2) 1M x 9	(2) 1M x 9
5MB	(18) 41256	NONE	(18) 41256	NONE	(2) 1M x 9	(2) 1M x 9
6MB	(18) 411000	NONE	(18) 411000	NONE	(2) 1M x 9	NONE
8MB	(18) 411000	NONE	(18) 411000	NONE	(2) 1M x 9	(2) 1M x 9

Note: The following configurations are only available on the NPM 16/C1: 640KB, 1.64MB & 4.64MB.

DRAM PARITY CONFIGURATION		
Size	Parity 0 (UE9, UE18)	Parity 1 (UE27, UE36)
512KB	NONE	NONE
512KB	(2) 41256	NONE
640KB	NONE	(2) 4164
640KB	(2) 41256	(2) 4164
1MB	NONE	NONE
1.5MB	NONE	NONE
1.64MB	NONE	NONE
2MB	NONE	NONE

Continued on next page...

UNIDENTIFIED
NPM 16/20 C-1

... continued from previous page

DRAM PARITY CONFIGURATION (CON'T)		
Size	Parity 0 (UE9, UE18)	Parity 1 (UE27, UE36)
2MB	NONE	NONE
3MB	NONE	NONE
4MB	NONE	NONE
4.64MB	NONE	NONE
5MB	NONE	NONE
6MB	NONE	NONE
8MB	NONE	NONE

Note: The following configurations are only available on the NPM 16/C1: 640KB, 1.64MB & 4.64MB.