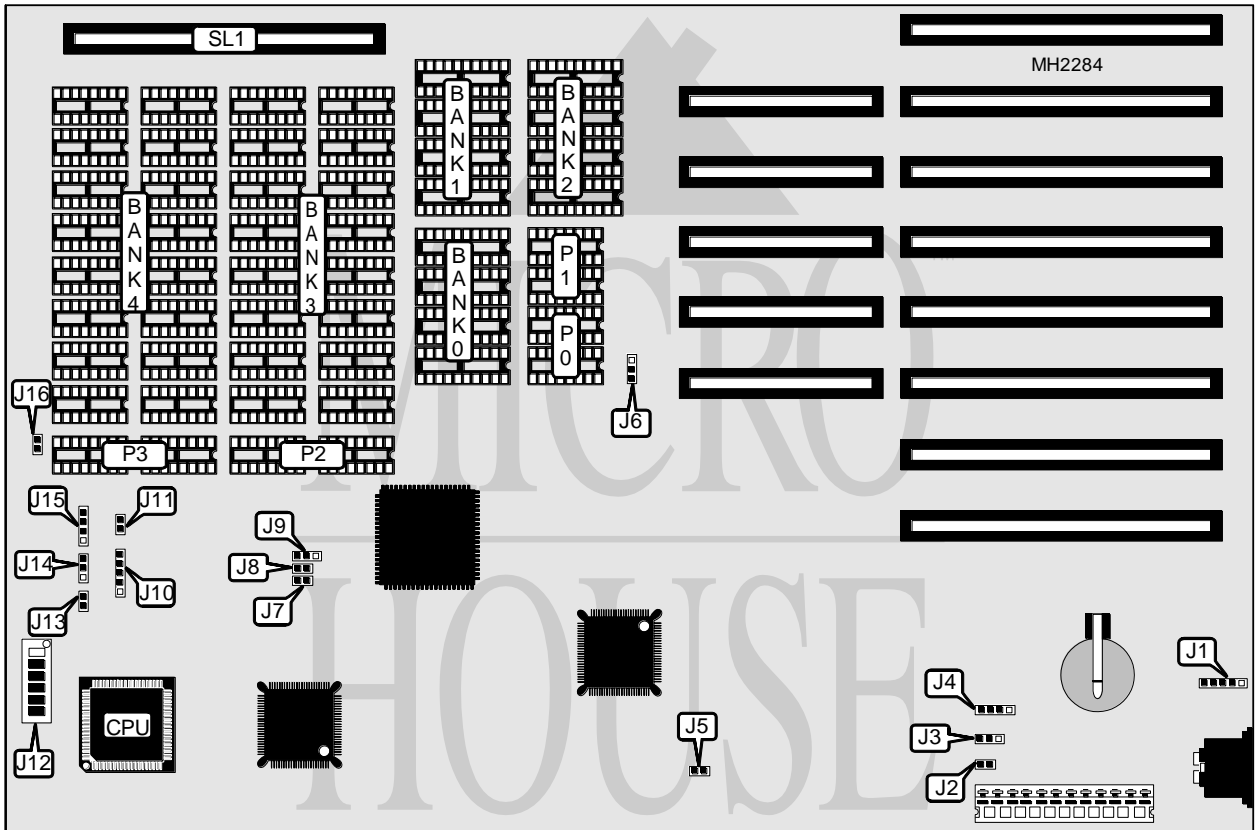


UNIDENTIFIED SEAT 286

Processor 80286
Processor Speed 12/16/20MHz
Chip Set G-2
Max. Onboard DRAM 8MB (4MB on external memory card)
Cache None
BIOS Unidentified
Dimensions 330mm x 218mm
I/O Options 16-bit external memory card
NPU Options 80287



CONNECTIONS			
Purpose	Location	Purpose	Location
Optional keyboard connector	J1	Turbo LED	J11
External battery	J4	Reset switch	J13
Power LED & keylock	J10	Speaker	J15
16-bit external memory card	SL1		

Continued on next page. . .

UNIDENTIFIED

SEAT 286

... continued from previous page

USER CONFIGURABLE SETTINGS		
Function	Jumper/Switch	Position
í Battery select 3.6v internal	J2	Closed
Battery select 6V external	J2	Open
í Power good signal detect from board	J3	pins 1 & 2 closed
Power good signal detect from power supply	J3	pins 2 & 3 closed
í Monitor type select color	J5	Closed
Monitor type select monochrome	J5	Open
í BIOS type select 27256	J6	pins 2 & 3 closed
BIOS type select 27128	J6	pins 1 & 2 closed
í Factory configured - do not alter	J7	N/A
í Factory configured - do not alter	J8	N/A
í Parity check disabled	J9	pins 2 & 3 closed
Parity check enabled	J9	pins 1 & 2 closed
í I/O speed select half	J12/1	On
I/O speed select full	J12/1	Off
í Extended 384K RAM enabled	J12/4	Off
Extended 384K RAM disabled	J12/4	On
í DRAM type select 1M x 1	J12/6	On
DRAM type select 256K x 4	J12/6	Off
í NPU asynchronous with CPU	J14	pins 2 & 3 closed
NPU synchronous with CPU	J14	pins 1 & 2 closed
í Turbo enabled	J16	Open
Turbo disabled	J16	Closed

DRAM CONFIGURATION					
Size	Bank 0	Bank 1	Bank 2	Bank 3	Bank 4
512KB	(4) 44256	NONE	NONE	NONE	NONE
640KB	(4) 44256	NONE	(4) 4464	NONE	NONE
1MB	(4) 44256	(4) 44256	NONE	NONE	NONE
2MB	NONE	NONE	NONE	(16) 421000	NONE
4MB	NONE	NONE	NONE	(16) 421000	(16) 421000

PARITY CONFIGURATION				
Size	P0	P1	P2	P3
512KB	(2) 41256	NONE	NONE	NONE
640KB	NONE	NONE	NONE	NONE
1MB	(2) 41256	(2) 41256	NONE	NONE
2MB	NONE	NONE	(2) 421000	NONE
4MB	NONE	NONE	(2) 421000	(2) 421000

Continued on next page...

UNIDENTIFIED SEAT 286

DRAM SWITCH CONFIGURATION			
Size	J12/2	J12/3	J12/5
512KB	Off	Off	Off
640KB	Off	Off	On
1MB	On	Off	Off
2MB	Off	Off	Off
4MB	On	Off	Off
8MB	On	On	Off

Note: J12/4 & J12/5 must be ON for 640KB