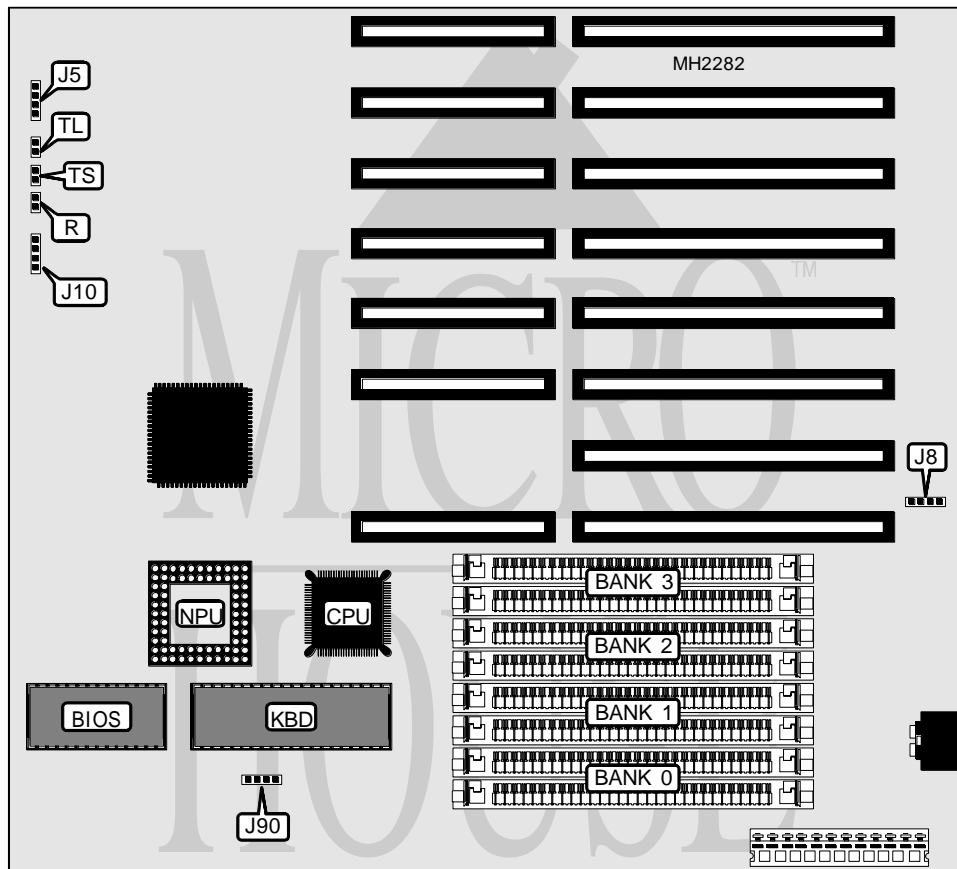


# UNIDENTIFIED VLSI SCAMP 80386SX

<b>Processor</b>	80386SX
<b>Processor Speed</b>	25MHz
<b>Chip Set</b>	Unidentified
<b>Max. Onboard DRAM</b>	16MB
<b>Cache</b>	None
<b>BIOS</b>	AMI
<b>Dimensions</b>	254mm x 220mm
<b>I/O Options</b>	None
<b>NPU Options</b>	80387SX



CONNECTIONS			
Purpose	Location	Purpose	Location
Speaker	J5	Turbo LED	TL
External battery	J8	Turbo switch	TS
Power LED & keylock	J10	Reset switch	R

Continued on next page. . .

# UNIDENTIFIED

## VLSI SCAMP 80386SX

... continued from previous page

### USER CONFIGURABLE SETTINGS

Function	Jumper	Position
í Factory configured - do not alter	J90	N/A
í Turbo enabled	TS	Closed
Turbo disabled	TS	Open

### DRAM CONFIGURATION

Size	Bank 0	Bank 1	Bank 2	Bank 3
512KB	(2) 256K x 9	NONE	NONE	NONE
1MB	(2) 256K x 9	(2) 256K x 9	NONE	NONE
1.5MB	(2) 256K x 9	(2) 256K x 9	(2) 256K x 9	NONE
2MB	(2) 256K x 9	(2) 256K x 9	(2) 256K x 9	(2) 256K x 9
2MB	(2) 1M x 9	NONE	NONE	NONE
3MB	(2) 256K x 9	(2) 256K x 9	(2) 1M x 9	NONE
4MB	(2) 1M x 9	(2) 1M x 9	NONE	NONE
5MB	(2) 256K x 9	(2) 256K x 9	(2) 1M x 9	(2) 1M x 9
6MB	(2) 1M x 9	(2) 1M x 9	(2) 1M x 9	NONE
8MB	(2) 1M x 9	(2) 1M x 9	(2) 1M x 9	(2) 1M x 9
12MB	(2) 1M x 9	(2) 1M x 9	(2) 4M x 9	NONE
16MB	(2) 4M x 9	(2) 4M x 9	NONE	NONE