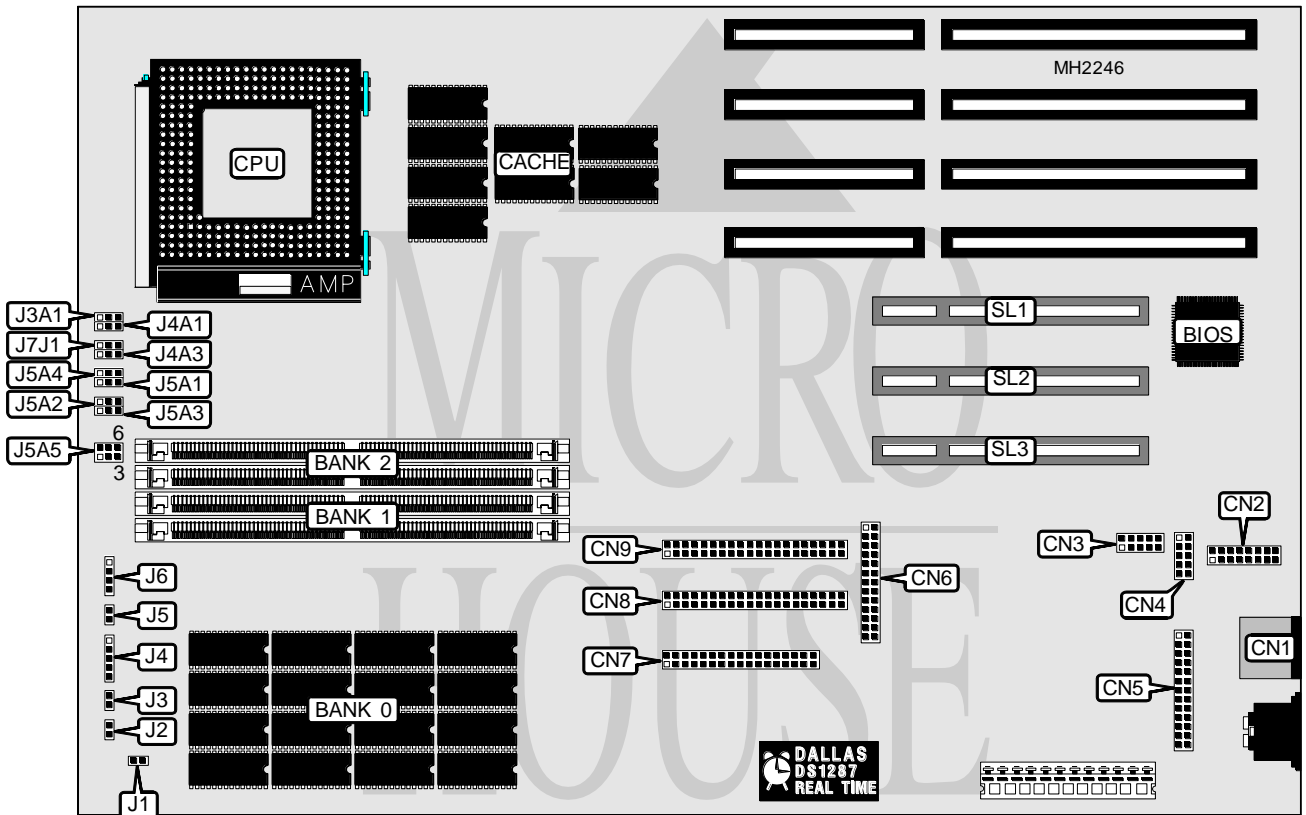


INTEL CORPORATION PENTIUM HENDRIX

Processor	Pentium
Processor Speed	60/66MHz
Chip Set	Intel
Max. Onboard DRAM	128MB
Cache	256/512KB
BIOS	AMI
Dimensions	330mm x 218mm
I/O Options	32-bit PCI bus slots (3), floppy drive interface, IDE interfaces (2), parallel port, PS/2 mouse port, serial ports (2), VGA feature connector,VGA interface
NPU Options	None



CONNECTIONS			
Purpose	Location	Purpose	Location
PS/2 mouse port	CN1	Turbo switch	J1
VGA interface	CN2	Turbo LED	J2
Serial port 2	CN3	IDE interface LED	J3
Serial port 1	CN4	Power LED & keylock	J4
Parallel port	CN5	Reset switch	J5
VGA feature connector	CN6	Speaker	J6
Floppy drive interface	CN7	32-bit PCI bus slots	SL1 - SL3
IDE interface 2	CN8	Fast chassis fan power	J3A1
IDE interface 1	CN9	Slow chassis fan power	J4A1

Continued next page. . .

INTEL CORPORATION PENTIUM HENDRIX

... continued from previous page

USER CONFIGURABLE SETTINGS		
Function	Jumper	Position
í Flash BIOS write protect enabled	J4A3	pins 1 & 2 closed
Flash BIOS write protect disabled	J4A3	pins 2 & 3 closed
í Password disabled	J5A1	pins 2 & 3 closed
Password enabled	J5A1	pins 1 & 2 closed
CMOS memory normal operation	J5A2	pins 2 & 3 closed
CMOS memory clear	J5A2	pins 1 & 2 closed
Flash BIOS recovery mode normal	J5A3	pins 2 & 3 closed
Flash BIOS recovery mode flash	J5A3	pins 1 & 2 closed
í Monitor type select color	J5A4	pins 2 & 3 closed
Monitor type select monochrome	J5A4	pins 1 & 2 closed
í CMOS setup accessible	J7J1	pins 1 & 2 closed
í CMOS setup not accessible	J7J1	pins 2 & 3 closed

DRAM CONFIGURATION (TABLE 1)		
Size	Bank 0	Bank 1
10MB	(16) 512K x 9	(2) 256K x 36
12MB	(16) 512K x 9	(2) 512K x 36
16MB	(16) 512K x 9	(2) 1M x 36
24MB	(16) 512K x 9	(2) 2M x 36
40MB	(16) 512K x 9	(2) 4M x 36
72MB	(16) 512K x 9	(2) 8M x 36

Note: If board has 8MB factory installed, Bank 2 is not present.

DRAM CONFIGURATION (TABLE 2)		
Size	Bank 1	Bank 2
2MB	(2) 256K x 36	NONE
4MB	(2) 256K x 36	(2) 256K x 36
4MB	(2) 512K x 36	NONE
6MB	(2) 256K x 36	(2) 512K x 36
6MB	(2) 512K x 36	(2) 256K x 36
8MB	(2) 512K x 36	(2) 512K x 36
8MB	(2) 1M x 36	NONE
10MB	(2) 256K x 36	(2) 1M x 36
10MB	(2) 1M x 36	(2) 256K x 36
12MB	(2) 512K x 36	(2) 1M x 36
12MB	(2) 1M x 36	(2) 512K x 36
16MB	(2) 1M x 36	(2) 1M x 36
16MB	(2) 2M x 36	NONE
18MB	(2) 256K x 36	(2) 2M x 36
18MB	(2) 2M x 36	(2) 256K x 36
20MB	(2) 512K x 36	(2) 2M x 36
20MB	(2) 2M x 36	(2) 512K x 36
24MB	(2) 1M x 36	(2) 2M x 36
24MB	(2) 2M x 36	(2) 1M x 36

Continued next page...

INTEL CORPORATION

PENTIUM HENDRIX

... continued from previous page

DRAM CONFIGURATION (TABLE 2 CON'T)		
Size	Bank 1	Bank 2
32MB	(2) 2M x 36	(2) 2M x 36
32MB	(2) 4M x 36	NONE
34MB	(2) 256K x 36	(2) 4M x 36
34MB	(2) 4M x 36	(2) 256K x 36
36MB	(2) 512K x 36	(2) 4M x 36
36MB	(2) 4M x 36	(2) 512K x 36
40MB	(2) 1M x 36	(2) 4M x 36
40MB	(2) 4M x 36	(2) 1M x 36
48MB	(2) 2M x 36	(2) 4M x 36
48MB	(2) 4M x 36	(2) 2M x 36
64MB	(2) 4M x 36	(2) 4M x 36
64MB	(2) 8M x 36	NONE
66MB	(2) 256K x 36	(2) 8M x 36
66MB	(2) 8M x 36	(2) 256K x 36
68MB	(2) 512K x 36	(2) 8M x 36
68MB	(2) 8M x 36	(2) 512K x 36
72MB	(2) 1M x 36	(2) 8M x 36
72MB	(2) 8M x 36	(2) 1M x 36
80MB	(2) 2M x 36	(2) 8M x 36
80MB	(2) 8M x 36	(2) 2M x 36
96MB	(2) 4M x 36	(2) 8M x 36
96MB	(2) 8M x 36	(2) 4M x 36
128MB	(2) 8M x 36	(2) 8M x 36

Note: If board has Bank 1 & Bank 2 installed, the factory installed 8MB is not present.

CACHE CONFIGURATION		
Size	Bank 0	Bank 1
256KB	(4) 32K x 8	(4) 32K x 8
512KB	(4) 64K x 8	(4) 64K x 8

Note: Cache is factory installed and is not configurable. Cache size depends on board version.

CPU SPEED CONFIGURATION	
Speed	J5A5
60MHz	pins 2 & 3 closed
66MHz	pins 1 & 2 closed